

# ONLINE ONLY AUCTION

## Highway 183 Farm Auction

Bidding Opens July 1 at 8:00am (CT)

Bidding Ends July 2 at 1:00pm (CT)



*Scan  
to bid  
online!*



HAYDEN  OUTDOORS.

# Highway 183 Farm Auction

TOTAL ACRES:

761.10

PRICE:

Auction

COUNTY:

Tripp County

CLOSEST TOWN:

Winner, SD

## Activities & Amenities:

ATV/Off Road  
Auction  
Development Potential  
Farm/Crops/Ag  
Food Plots  
Hunting - Big Game, Predator/Varmint,  
Small Game, Upland Birds  
Income Producing  
Recreational Business

## Land Details

**Address:** TBD 183, Winner,  
South Dakota 57580, USA

**Closest Town:** Winner

**Total Acres:** 761.10

**Income Type:** Farming/Hunting

**Estimated Taxes:** \$8,480.12 - 2025

## Auction Details

**Auction Type:** Online

**Auction Start Date:** 7/1/2026 - 8:00 am

**Auction End Date:** 7/2/2026 - 1:00 pm

Online Only Land Auction - Tripp  
County, South Dakota

5 Tracts

*This is an exceptional opportunity to purchase 761.1± acres of highly productive farmland in Tripp County. Conveniently located just off U.S. Highway 183, this offering combines strong agricultural income potential with outstanding recreational appeal.*

## Property Summary

This is an exceptional opportunity to purchase 761.1± acres of highly productive farmland in Tripp County. Conveniently located just off U.S. Highway 183, this offering combines strong agricultural income potential with outstanding recreational appeal.

## Land

This 761.1± acre offering in Tripp County consists of predominantly high-quality dryland farmland with a proven history of production. The property features a desirable mix of gently rolling to mostly level terrain, allowing for efficient farming practices and ease of operation across all five tracts.

The soils are well-balanced and highly productive, primarily made up of Millboro and Witten silty clays, with an overall average CPI of approximately 76 and select areas reaching into the low 80s. These soil profiles are known for their moisture-holding capacity and consistency, supporting strong yields for crops commonly grown in the region such as winter wheat and corn.

With approximately 70% of the acreage in active cropland production, the balance consists of grassland and minor low-lying areas that provide natural drainage and wildlife habitat. The property's layout, soil quality, and access make it well-suited for both owner-operators and investors seeking dependable income-producing farmland.

Offered in five tracts, this farm provides flexibility for buyers to acquire individual parcels or expand their operation with a larger contiguous holding.





## Recreation

Beyond its agricultural value, this property is located in a region widely recognized for its exceptional recreational opportunities. Tripp County is well known for its strong populations of ring-necked pheasants, along with opportunities to hunt whitetail deer, mule deer, and wild turkey.

## Region & Climate

Located in south-central South Dakota, Tripp County sits within the transitional zone between the Great Plains and the western prairie, offering a strong blend of productive agricultural ground and native grasslands. The landscape is characterized by gently rolling terrain, fertile soils, and a mix of cropland and pasture, making it well-suited for both farming and ranching operations.

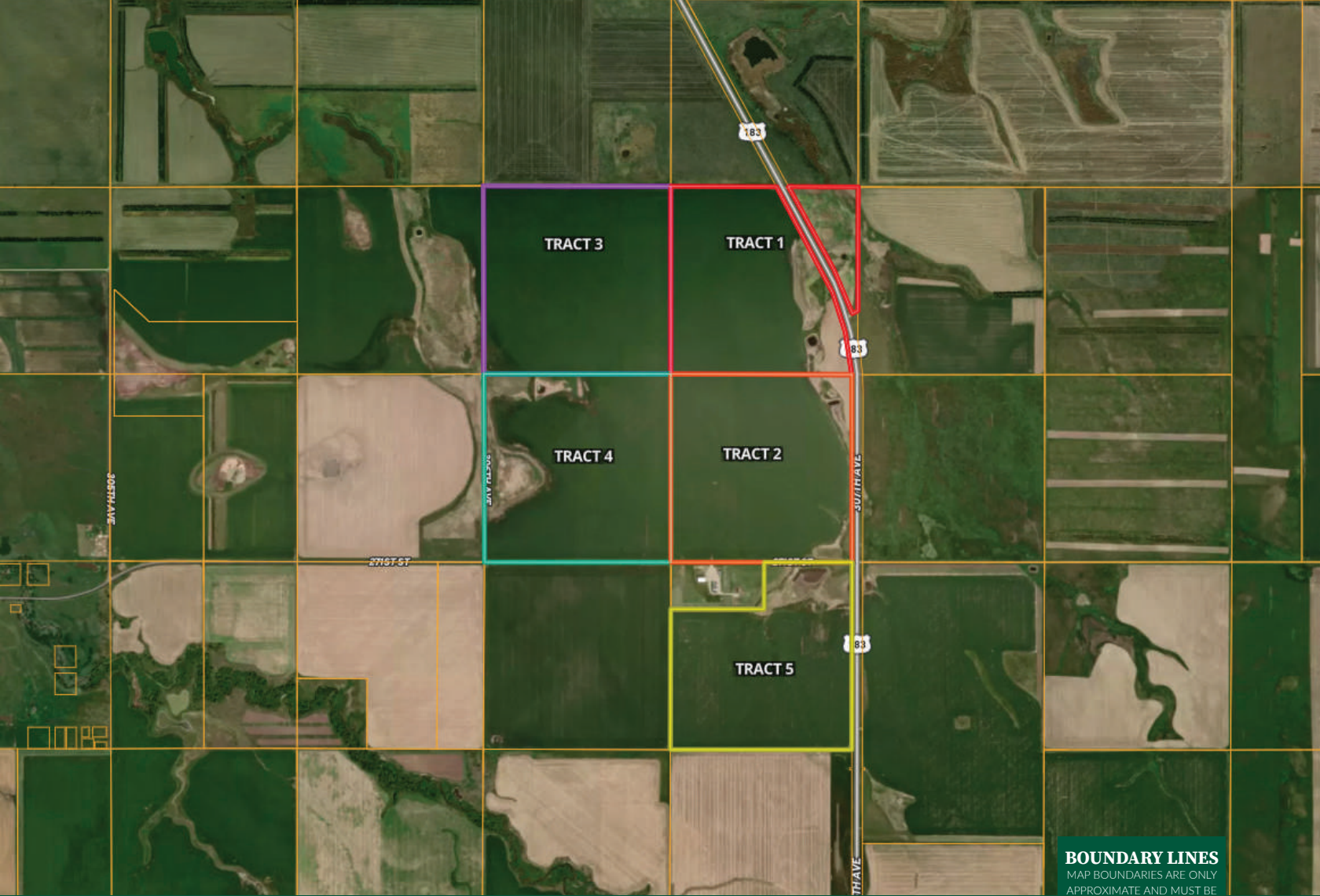
The area experiences a continental climate with four distinct seasons. Summers are typically warm with average highs in the 80s, providing an ideal growing season for crops such as corn and winter wheat. Winters are cold and dry, while spring and early summer bring the majority of the region's annual precipitation, generally ranging from 20–25 inches per year. These conditions support consistent crop production while also maintaining healthy habitat for wildlife.

## Location

Located approximately 10 miles northwest of Winner and just off U.S. Highway 183, this property offers both convenience and seclusion. The surrounding area is well known for its strong agricultural presence and abundant wildlife, with excellent pheasant hunting and additional opportunities for deer and turkey. Nearby access to the Missouri River provides fishing and water recreation, further enhancing the property's appeal. This combination of location, productivity, and recreation creates lasting value for both agricultural operators and outdoor enthusiasts.

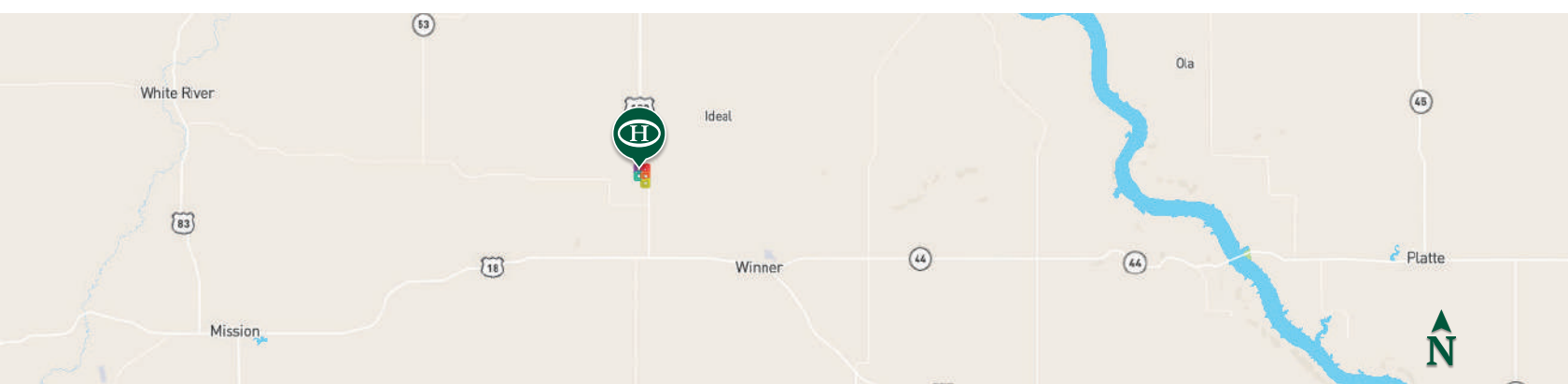
*\*All information provided is deemed reliable but is not guaranteed and should be independently verified. Hayden Outdoors and its affiliates makes no representation or warranties as to the accuracy, reliability, or completeness of the information, text, property boundaries, graphics links or other items contained in any website, print, or otherwise linked to or from this website. The sale offering is made subject to errors, omissions, change of price, prior sale or withdrawal without notice.*





 Boundary

**BOUNDARY LINES**  
 MAP BOUNDARIES ARE ONLY APPROXIMATE AND MUST BE VERIFIED FOR ACCURACY.






# HAYDEN OUTDOORS.

FARM, RANCH & RECREATIONAL REAL ESTATE





## Nathan Smither

 Licensed in NE & SD  
 NathanSmither@HaydenOutdoors.com  
 605.841.0690



## Cord Hesseltine

Licensed in NE & SD   
 Cord@HaydenOutdoors.com   
 308.539.2192 