

Burdett Dryland 610

610.31 Acres | Pawnee County, KS | \$1,208,000



HAYDEN  OUTDOORS.

Burdett Dryland 610

TOTAL ACRES:

610.31

PRICE:

\$1,208,000

COUNTY:

Pawnee County

CLOSEST TOWN:

Burdett, KS

Activities & Amenities:

State Hunting Unit: 17

Land Details

Address: 456 K156 HWY,
Burdett, Kansas 67523, USA

Closest Town: Burdett

Total Acres: 610.31

Zoning: Agricultural

Estimated Taxes: \$2,777.34 - 2025

Source of lot size: Assessor/Tax Data

Property Summary

Located ½ mile east of Burdett, Kansas on Highway 156, this 610± acre farm features excellent access and productive dryland cropland. Approximately 579± acres are in cultivation with 31± acres of fenced pasture. Class II and III Harney silt loam soils make this a strong addition to any farming operation.

Land

Located just ½ mile east of Burdett, Kansas, along Highway 156, this productive 610± acre tract offers excellent access and strong agricultural potential in the heart of Pawnee County. With blacktop frontage along the highway and well-maintained county roads bordering the section, this property provides outstanding accessibility for farm equipment and grain hauling.

The property consists of 610± total acres, with approximately 31± acres in the northwest corner currently in pasture, fully enclosed with fence and suitable for grazing livestock or a potential build site. The remaining approximately 579± acres are in dryland crop production, making this an attractive opportunity for producers looking to expand their operation with quality farm ground.

The soils across the property are primarily Class II and Class III soils, dominated by Harney silt loam, known throughout the region for its productivity and strong performance in dryland farming practices. These soils are well suited for crops commonly grown in the area such as wheat, milo, and corn.





Land

In addition to its productive soils and large contiguous acreage, the property's location directly along Highway 156 and just outside of Burdett makes it highly efficient for farming operations while also providing convenient access to nearby grain markets and agricultural infrastructure.

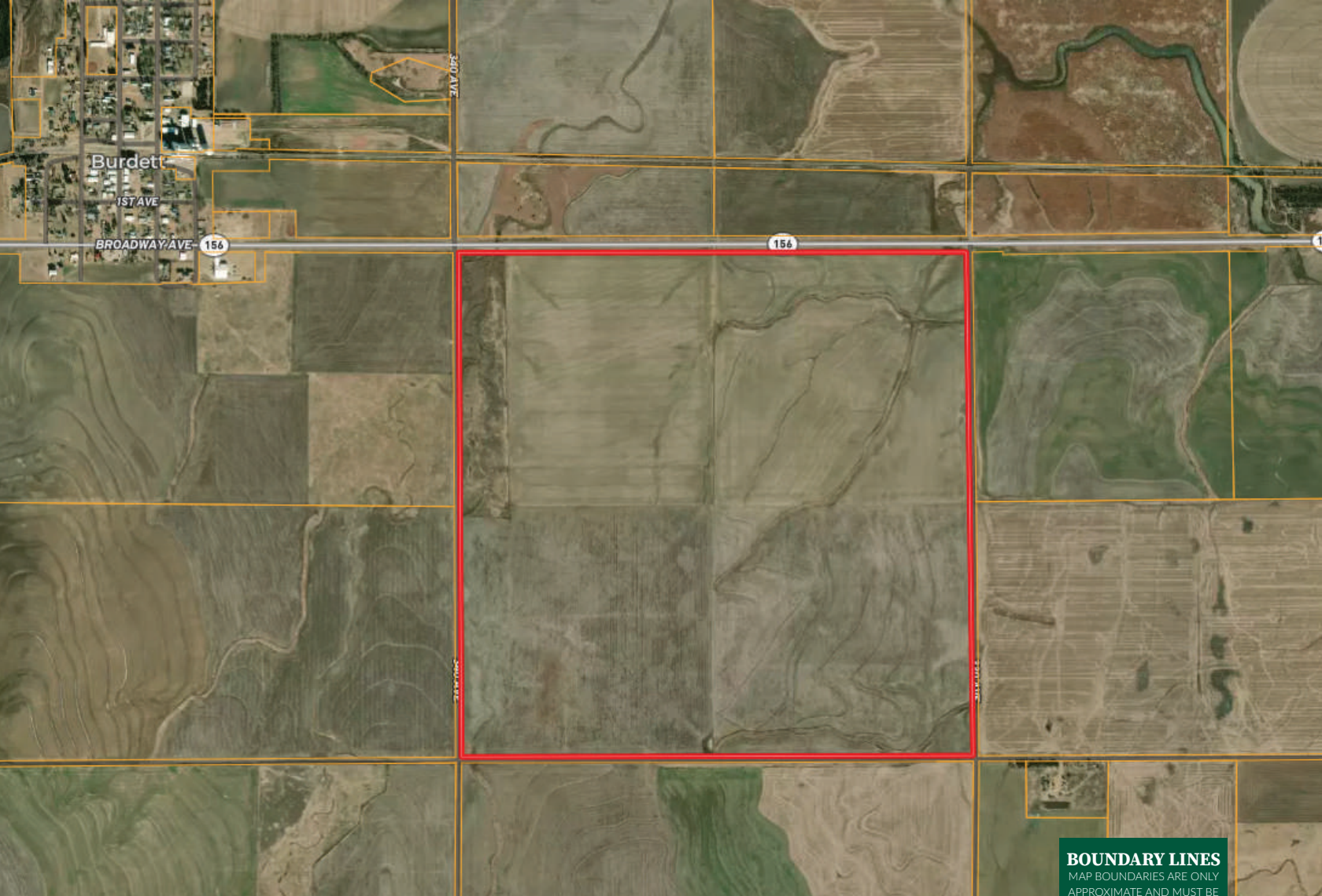
Large, contiguous tracts of quality dryland farmland with excellent access and productive soils are becoming increasingly difficult to find in western Kansas. The Burdett 610 Dryland presents a rare opportunity to acquire a sizeable piece of high-quality farm ground in a proven agricultural area.

Region & Climate

Pawnee County and the surrounding Burdett area sit in the heart of western Kansas farm country, known for its strong agricultural heritage and productive soils. The region experiences a semi-arid climate with warm summers, moderate winters, and an average annual precipitation of approximately 22–25 inches. These conditions, combined with deep silt loam soils, make the area well suited for dryland farming practices and crops such as wheat, milo, and corn. The local agricultural infrastructure, nearby grain markets, and strong farming community continue to make this area a reliable and desirable place for crop production.

**All information provided is deemed reliable but is not guaranteed and should be independently verified. Hayden Outdoors and its affiliates makes no representation or warranties as to the accuracy, reliability, or completeness of the information, text, property boundaries, graphics links or other items contained in any website, print, or otherwise linked to or from this website. The sale offering is made subject to errors, omissions, change of price, prior sale or withdrawal without notice.*

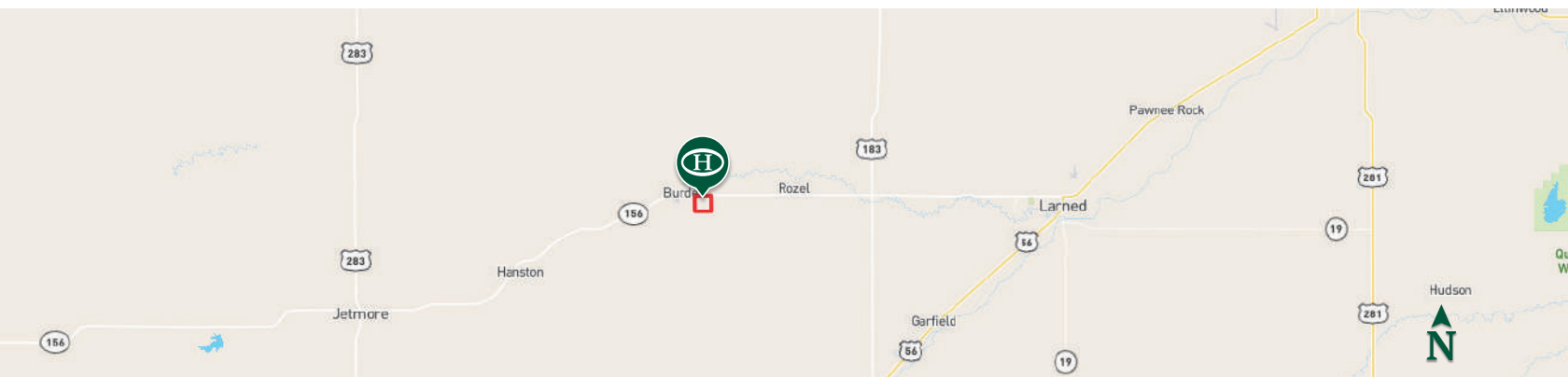




 Boundary

BOUNDARY LINES

MAP BOUNDARIES ARE ONLY APPROXIMATE AND MUST BE VERIFIED FOR ACCURACY.






HAYDEN OUTDOORS

FARM, RANCH & RECREATIONAL REAL ESTATE






Connor Williams

 Salesperson, Licensed in KS MO, & OK
 Connor@HaydenOutdoors.com
 620.617.6300



Alex Birney

 Salesperson, Licensed in KS 
ABirney@HaydenOutdoors.com 
620.617.8317 