

# Burdett Dryland 147

147.30 Acres

Pawnee County, KS

\$292,000



HAYDEN  OUTDOORS.

# Burdett Dryland 147

TOTAL ACRES:

147.30

PRICE:

\$292,000

COUNTY:

Pawnee County

CLOSEST TOWN:

Burdett, KS

## Activities & Amenities:

Hunting - Upland Birds  
Income Producing  
State Hunting Unit: 5

## Land Details

Address: 567 K156 HWY,  
Burdett, Kansas 67523, USA  
Closest Town: Burdett  
Total Acres: 147.30  
Zoning: Agricultural  
Estimated Taxes: \$497.75 - 2025  
Source of lot size: Assessor/Tax Data

## Property Summary

Located ½ mile east of Burdett, Kansas along Highway 156, the Burdett Dryland 147 offers 147± acres of productive farm ground with excellent access. Approximately 127± acres are in dryland crop production with 20± acres in grass. Harney silt loam soils, new terraces, and a strong history of good production creates a solid tract for all buyers.

## Land

Located just ½ mile east of Burdett, Kansas, along Highway 156, the Burdett Dryland 147 offers a productive and well-maintained tract of farm ground with excellent access in Pawnee County. With blacktop frontage along Highway 156 and strong nearby county road access, this property allows for convenient movement of farm equipment and grain hauling.

The property consists of 147± total acres, with approximately 20± acres currently in grass and the remaining 127± acres in dryland crop production. The cropland has been well cared for and recently improved with newly constructed terraces, helping protect the soil and enhance long-term productivity.

Soils across the property are primarily Harney silt loam, well known throughout the region for their strong dryland farming capability. These soils are highly suited for crops commonly grown in the area including wheat, milo, and corn.

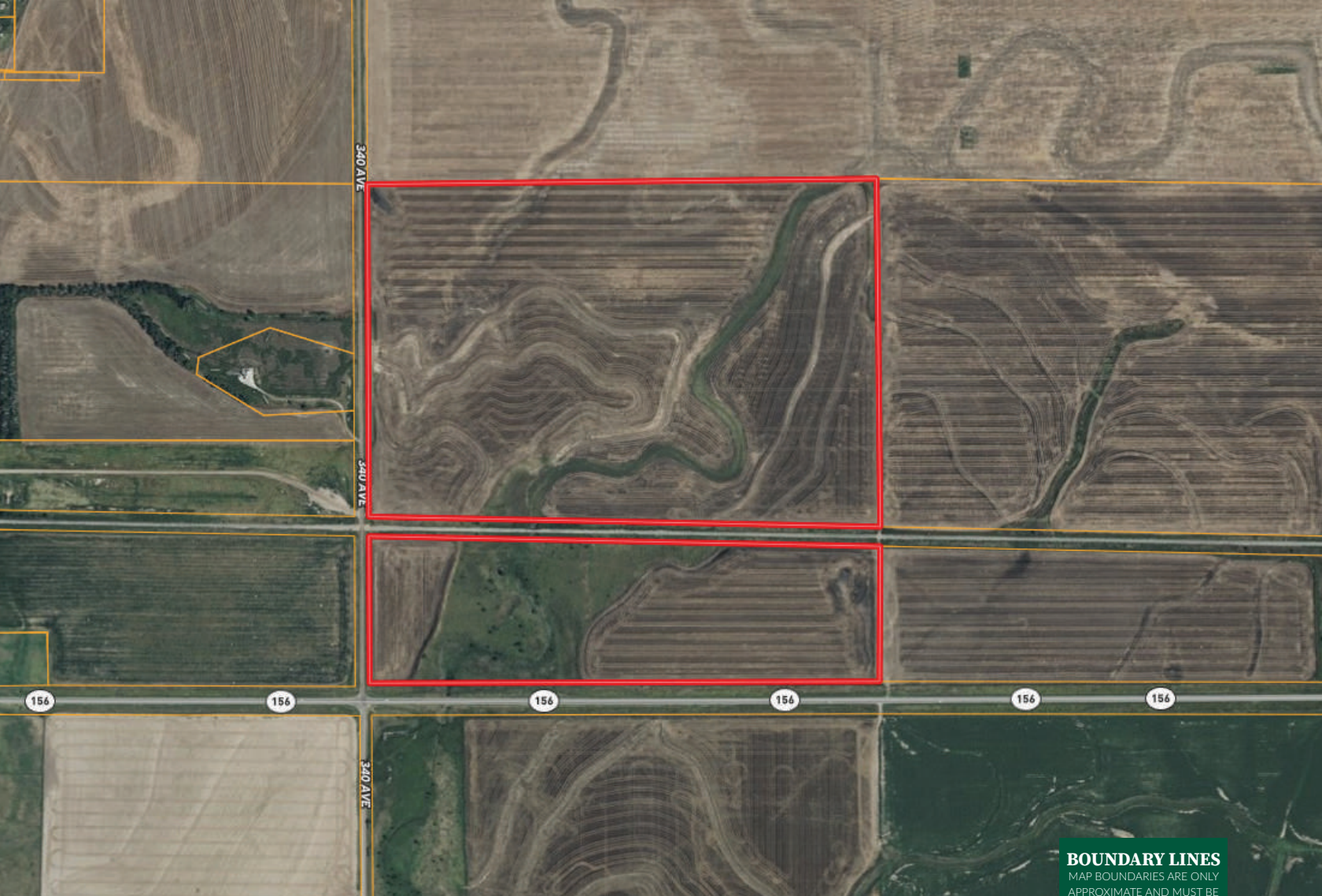
The Burdett Dryland 147 also sits directly across the road from the Burdett 610 Dryland, presenting a rare opportunity for buyers to acquire one or both tracts in a highly productive farming area.

## Region & Climate

Pawnee County and the surrounding Burdett area are located in the heart of western Kansas farm country, known for its strong agricultural heritage and productive soils. The region experiences a semi-arid climate with warm summers, moderate winters, and average annual precipitation of approximately 22–25 inches. These conditions, paired with deep silt loam soils, make the area well suited for dryland farming practices and crops such as wheat, milo, and corn. Access to nearby grain markets and a strong local farming community continue to make this region a reliable place for agricultural production.

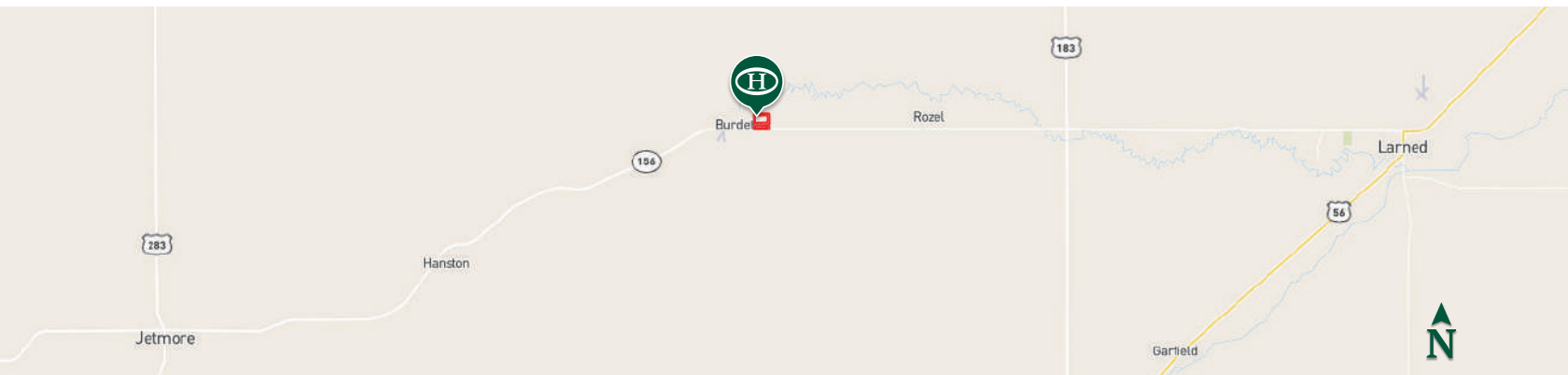
\*All information provided is deemed reliable but is not guaranteed and should be independently verified. Hayden Outdoors and its affiliates makes no representation or warranties as to the accuracy, reliability, or completeness of the information, text, property boundaries, graphics links or other items contained in any website, print, or otherwise linked to or from this website. The sale offering is made subject to errors, omissions, change of price, prior sale or withdrawal without notice.





 Boundary

**BOUNDARY LINES**  
 MAP BOUNDARIES ARE ONLY APPROXIMATE AND MUST BE VERIFIED FOR ACCURACY.



# HAYDEN OUTDOORS

FARM, RANCH & RECREATIONAL REAL ESTATE



## Connor Williams

📍 Salesperson, Licensed in KS MO, & OK  
 ✉️ Connor@HaydenOutdoors.com  
 📞 620.617.6300



## Alex Birney

📍 Salesperson, Licensed in KS  
 ✉️ ABirney@HaydenOutdoors.com  
 📞 620.617.8317