

# 73687 Sierra Road

3.10 Acres | Chase County, NE | \$249,000



HAYDEN  OUTDOORS.

# 73687 Sierra Road

TOTAL ACRES:

3.10

PRICE:

\$249,000

COUNTY:

Chase County

CLOSEST TOWN:

Imperial, NE

## Activities & Amenities:

ATV/Off Road  
Equestrian/Horse Property  
State Hunting Unit: Frenchman West

## Land Details:

Address: 73687 Sierra Road ,  
Imperial , Nebraska 69033, USA  
Subdivision: Genesis  
Closest Town: Imperial  
Total Acres: 3.10  
Zoning: AG  
Elevation: 3300  
Topography: flat  
Vegetation: native grass  
Estimated Taxes: \$255 - 2025  
Source of lot size: Assessor/Tax Data

## Building Details

Electricity Provider:  
Southwest Public Power  
Water Provider: Domestic Well  
Outbuildings: 1

## About This Property

Newly built 56' x 40' wood-frame, steel-clad shop on 3.1 acres just 1 mile from Imperial, Nebraska. Features a concrete floor, approach and apron, plus a 12' x 18' overhead door for large vehicles or equipment. Property includes new electric service, a new well, and a 50-amp exterior RV outlet. Plenty of space to build, expand, or enjoy as-is with room for your home, shop needs, or recreational use.

## Land

Located just 1 mile from Imperial, Nebraska, this newly built 56' x 40' wood-frame, steel-clad shop offers the ideal combination of being in the country and close-to-town convenience. Enjoy the space and privacy of 3.1 acres while being only minutes from schools, shopping, dining, and other local amenities.

The building features 15' sidewalls and a 12' x 18' overhead door, providing excellent clearance for RVs, boats, farm equipment, semis, or large trailers. A full concrete floor, along with a concrete approach and apron, ensures durability and easy year-round access. A 50-amp exterior RV outlet adds extra flexibility for campers or guests.

With new electric service and a newly drilled well already in place, this property is well-positioned for future home construction or expanded improvements. The 3.1 acres offer plenty of room for up to 4 horses per lot or simply space to spread out and enjoy rural living—while staying just a mile from Imperial.

## Recreation

Imperial, Nebraska is a hidden gem for outdoor enthusiasts, offering year-round recreation just minutes from your doorstep. Located near Enders Reservoir State Recreation Area and within easy driving distance of Lake McConaughy (Lake Mac), this property puts you at the center of some of the best outdoor activities in the region.

Enders Reservoir is perfect for boating, fishing, jet skiing, kayaking, paddle boarding, and swimming, with excellent opportunities for walleye, wiper, bass, and catfish. The surrounding state recreation area also offers camping, hiking, wildlife viewing, and waterfowl hunting.

Just a short one hour drive north, Lake McConaughy — Nebraska's largest reservoir — features white sandy beaches, world-class boating, sailing, and incredible fishing for walleye, lake trout, and smallmouth bass. It's also a premier destination for camping, off-road trails, and spectacular sunsets over the water.





For hunters, this area is a dream. Imperial is surrounded by abundant public walk-in hunting lands, including Waterfowl Production Areas (WPAs) and Open Fields & Waters (OFW) properties, providing access to pheasant, quail, deer, turkey, and waterfowl hunting. The region is well known for strong upland bird populations and excellent deer habitat.

Additionally there are several golf courses within an hour of Imperial for every level of golf enthusiast.

Whether you enjoy fishing at sunrise, boating all afternoon, hiking scenic trails, or spending crisp fall mornings in the field, this Imperial property offers unmatched access to Nebraska's best outdoor recreation.

## Region & Climate

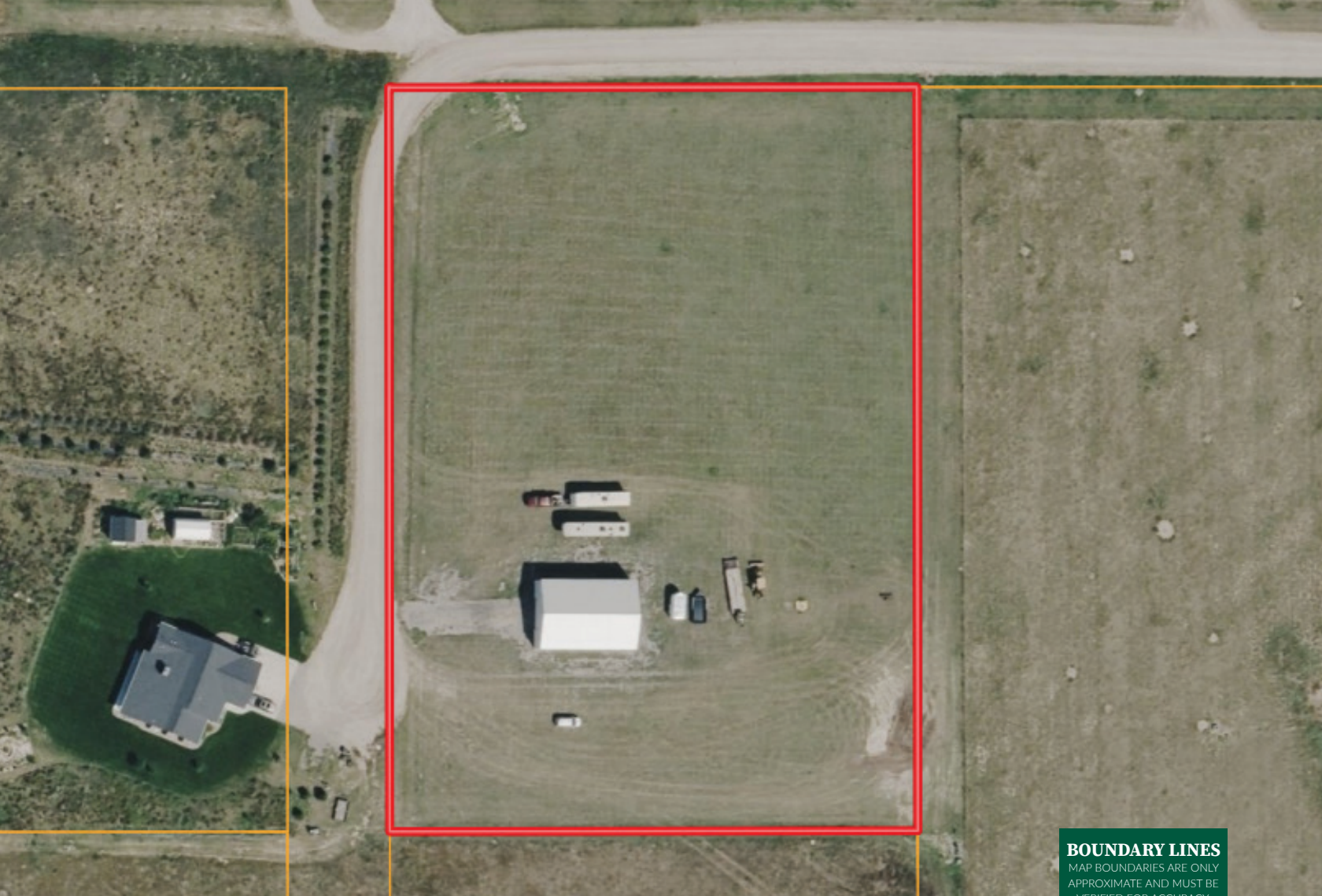
Imperial, Nebraska is located in the southwestern part of the state in Chase County, within the High Plains region. The area is known for its wide-open spaces, productive farmland, and gently rolling prairie. Agriculture plays a major role in the local economy, supported by irrigation from the nearby Frenchman Creek and Enders Reservoir, which also provides excellent opportunities for boating, fishing, and outdoor recreation.

Imperial experiences a semi-arid climate with four distinct seasons. Summers are typically warm to hot, with average July highs around 90°F, while nighttime lows often cool into the low 60s. Winters can be cold and dry, with average January highs near 40°F and lows commonly dipping into the mid-teens. Snowfall occurs during the winter months but is generally moderate compared to more northern parts of the state.

The region receives approximately 20 inches of total rainfall annually, with the majority falling during late spring and early summer, supporting crops and native grasses. Sunshine is abundant year-round, and the relatively low humidity and steady breezes are characteristic of the High Plains. Imperial's climate offers a true four-season experience with plenty of open skies and natural beauty.


\*All information provided is deemed reliable but is not guaranteed and should be independently verified. Hayden Outdoors and its affiliates makes no representation or warranties as to the accuracy, reliability, or completeness of the information, text, property boundaries, graphics links or other items contained in any website, print, or otherwise linked to or from this website. The sale offering is made subject to errors, omissions, change of price, prior sale or withdrawal without notice.

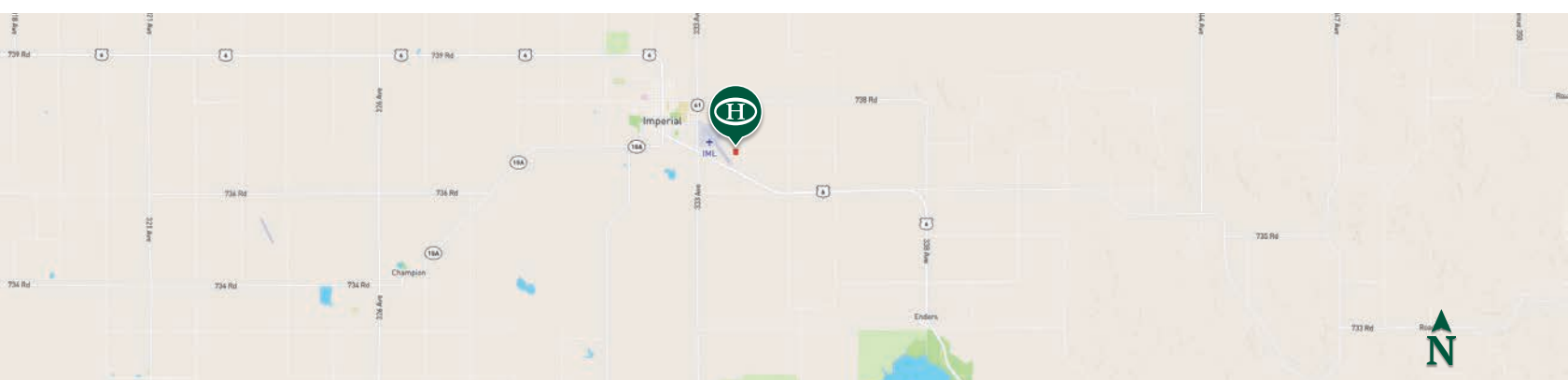




**BOUNDARY LINES**

MAP BOUNDARIES ARE ONLY APPROXIMATE AND MUST BE VERIFIED FOR ACCURACY.

 Boundary



# HAYDEN OUTDOORS.

FARM, RANCH & RECREATIONAL REAL ESTATE



## Clay Owens

- 📍 Licensed in CO, NE, KS & WY
- ✉ Clay@HaydenOutdoors.com
- 📞 308.882.8171



## Melisa Owens

- 📍 Broker, Licensed in CO & NE
- ✉ Melisa@HaydenOutdoors.com
- 📞 970.486.9985