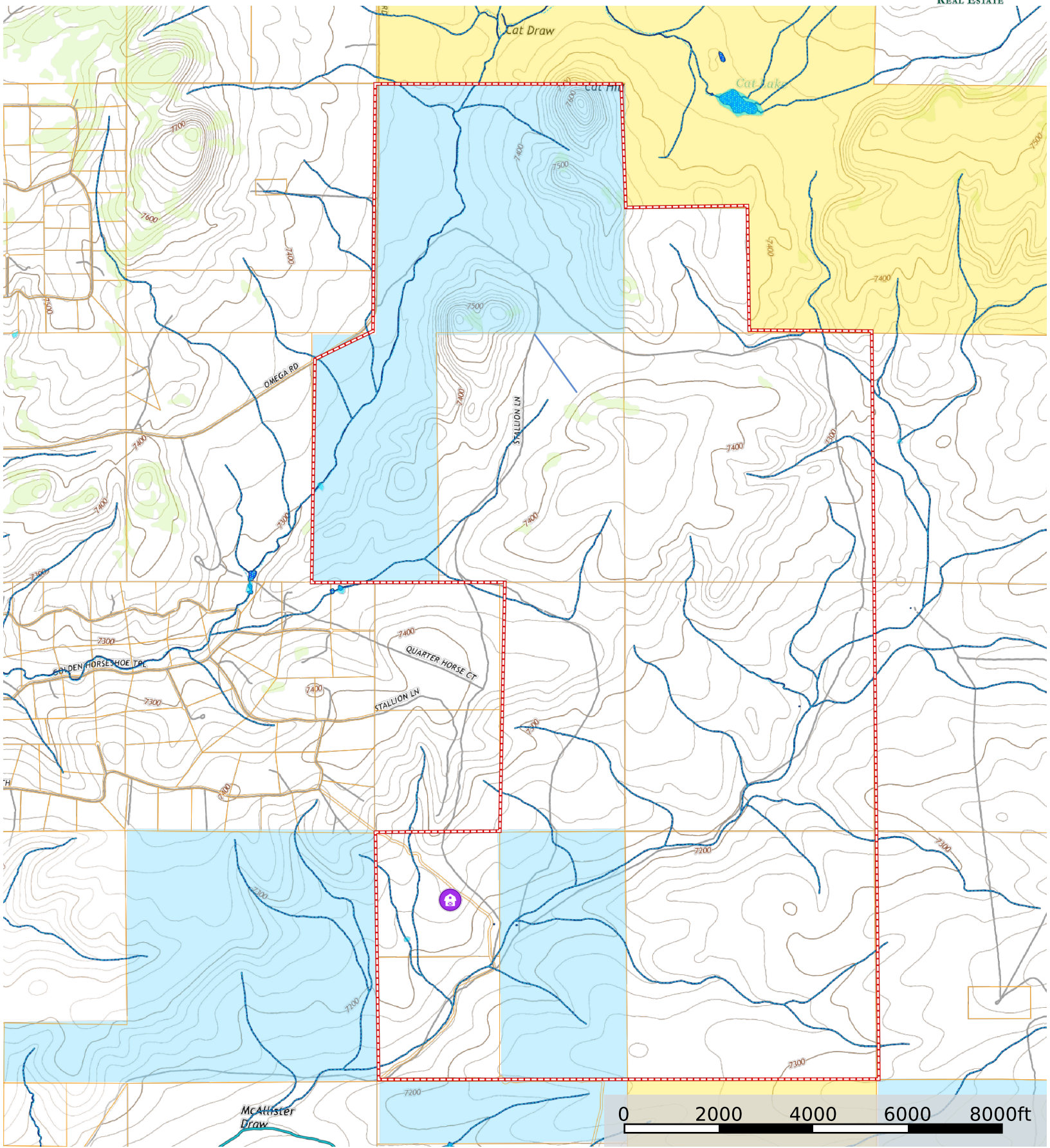


Cat Hill Trophy Elk & Cattle Ranch  
Catron County, New Mexico, 3200 AC +/-



Barn	River / Creek	Boundary	Forest Service	State Land	Fish and Wildlife	National Park	Other	BLM	Local Government
Conservation Easements	Wetlands	Riparian	Stream, Intermittent	River/Creek	Water Body	Voltage Unavailable	Voltage 0 - 99 KV	Voltage 100 - 161 KV	Voltage 220 - 287 KV
Voltage 345 KV	Voltage 500 KV	Voltage 735 KV+	Substations						