

The Lecompton 35

35.00 Acres

Douglas County, KS

\$428,000



HAYDEN  OUTDOORS.

The Lecompton 35

TOTAL ACRES:

35.00

PRICE:

\$428,000

COUNTY:

Douglas County

CLOSEST TOWN:

Lecompton, KS

Activities & Amenities:

ATV/Off Road
Farm/Crops/Ag
Hunting - Big Game, Predator/
Varmint, Small Game & Turkey

Land Details:

Address: 0000 E 600 Rd,
Lecompton, Kansas 66050, USA
Closest Town: Lecompton
Total Acres: 35.00
Deeded Acres: 35.00
Zoning: Agriculture
Pasture Acres: 35
Water Rights: Yes
Mineral Rights: Yes
Income Type: Hay
Estimated Taxes: \$97.78 - 2025
Source of lot size: Assessor/Tax Data

About This Property

Set between Lecompton and Lawrence, The Lecompton 35 offers open, fenced pasture in hay production with gently rolling terrain and wide views with paved road access. The land is well-suited for grazing, a hobby farm, or a future homesite, with usable ground throughout. Located in a historic area and within easy reach of Lawrence, Topeka, and the Kansas City metro, this property blends rural space with everyday accessibility.

Land

The Lecompton 35 is a 35-acre build tract ideally located between Lecompton and Lawrence, offering a great mix of open pasture and gently rolling terrain. The land is fenced and currently in quality hay production, making it well-suited for grazing, a hobby farm, or a future homesite. With open views and usable ground throughout, the property provides flexibility for building AND paved road access while continuing agricultural use. A water line runs along the west side of the property (east side of E 600 Rd) along with electricity. Buyer to verify if a water meter is available with RWD 6.

Agriculture

This tract offers quality agricultural ground with open pasture currently in hay production. The property is fenced and well-suited for grazing livestock or maintaining a small hay operation. With gently rolling terrain and usable acres throughout, this tract provides practical, productive land that can continue to generate agricultural value while still allowing flexibility for future use.





Region & Climate

The Lecompton area enjoys a four-season Kansas climate with warm summers, mild springs and falls, and cool winters. The region receives enough rainfall to support strong pasture and crop growth, making it ideal for agriculture. Outdoor activities such as hiking, hunting, fishing, and enjoying open countryside are popular year-round, with nearby river access and public lands adding to the area's appeal.

History

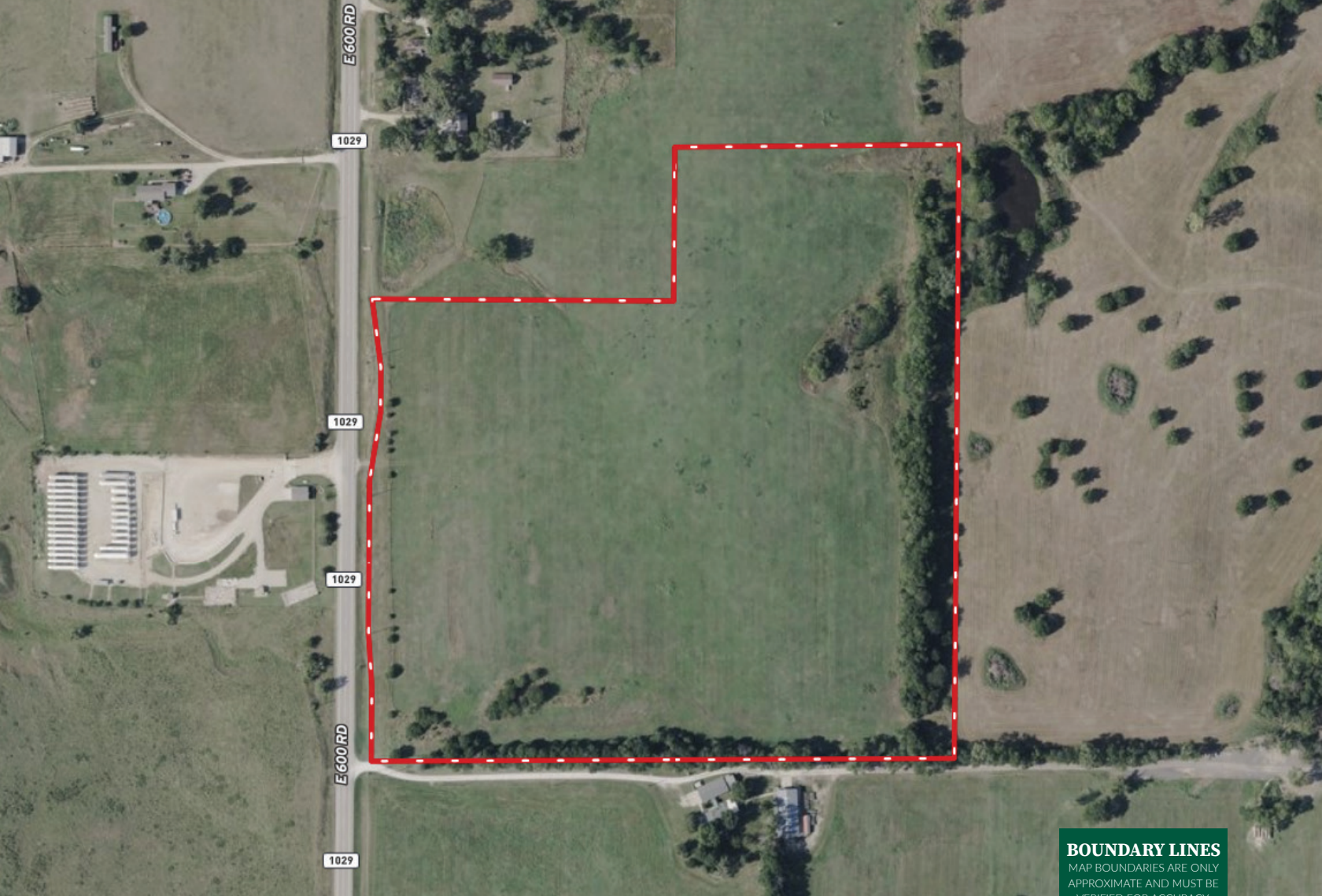
Lecompton is one of Kansas's most historic towns and briefly served as the territorial capital in the 1850s. It played a key role in the statehood debate during the Bleeding Kansas era and is best known for the Lecompton Constitution. Today, Lecompton is a quiet community that reflects Kansas's early frontier history and river valley roots.

Location


This property is conveniently located just 8 miles from Lawrence, 17 miles from Topeka, and 42 miles from the Kansas City metro area, offering easy access to work, shopping, and entertainment while still enjoying a rural setting. Properties in this location are hard to find and don't stay on the market long—reach out to the listing agents today to schedule your tour.

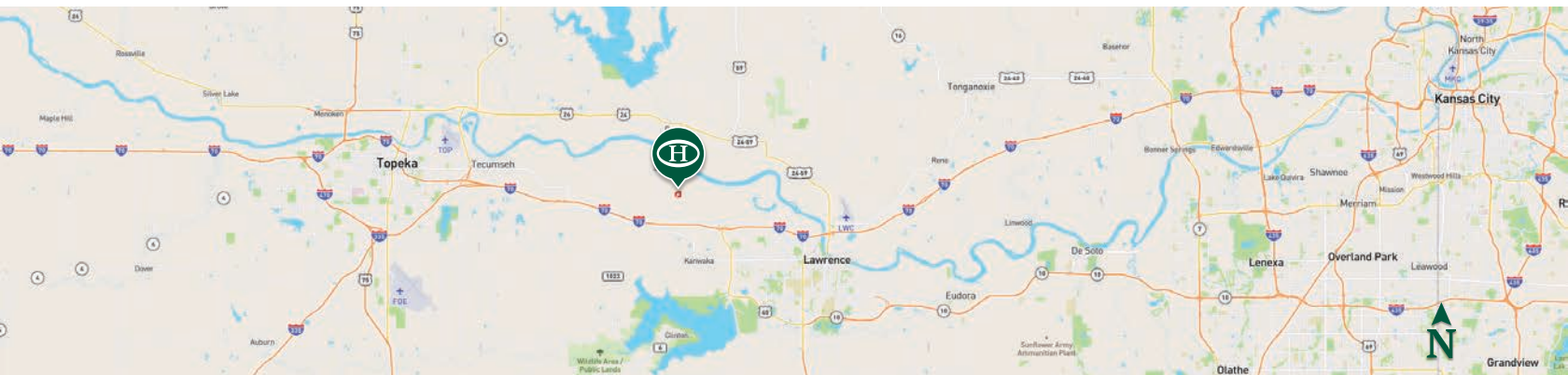
*All information provided is deemed reliable but is not guaranteed and should be independently verified. Hayden Outdoors and its affiliates makes no representation or warranties as to the accuracy, reliability, or completeness of the information, text, property boundaries, graphics links or other items contained in any website, print, or otherwise linked to or from this website. The sale offering is made subject to errors, omissions, change of price, prior sale or withdrawal without notice.





BOUNDARY LINES
MAP BOUNDARIES ARE ONLY
APPROXIMATE AND MUST BE
VERIFIED FOR ACCURACY.

 Boundary



HAYDEN OUTDOORS

FARM, RANCH & RECREATIONAL REAL ESTATE



Penny Sheldon

📍 Salesperson, Licensed in KS
✉ Penny@HaydenOutdoors.com
📞 785.821.2011

Shad Sheldon

📍 Salesperson, Licensed in KS
✉ Shad@HaydenOutdoors.com
📞 785.821.2666



www.HaydenOutdoors.com

THE BRAND THAT SELLS THE *Land*®

866.741.8323