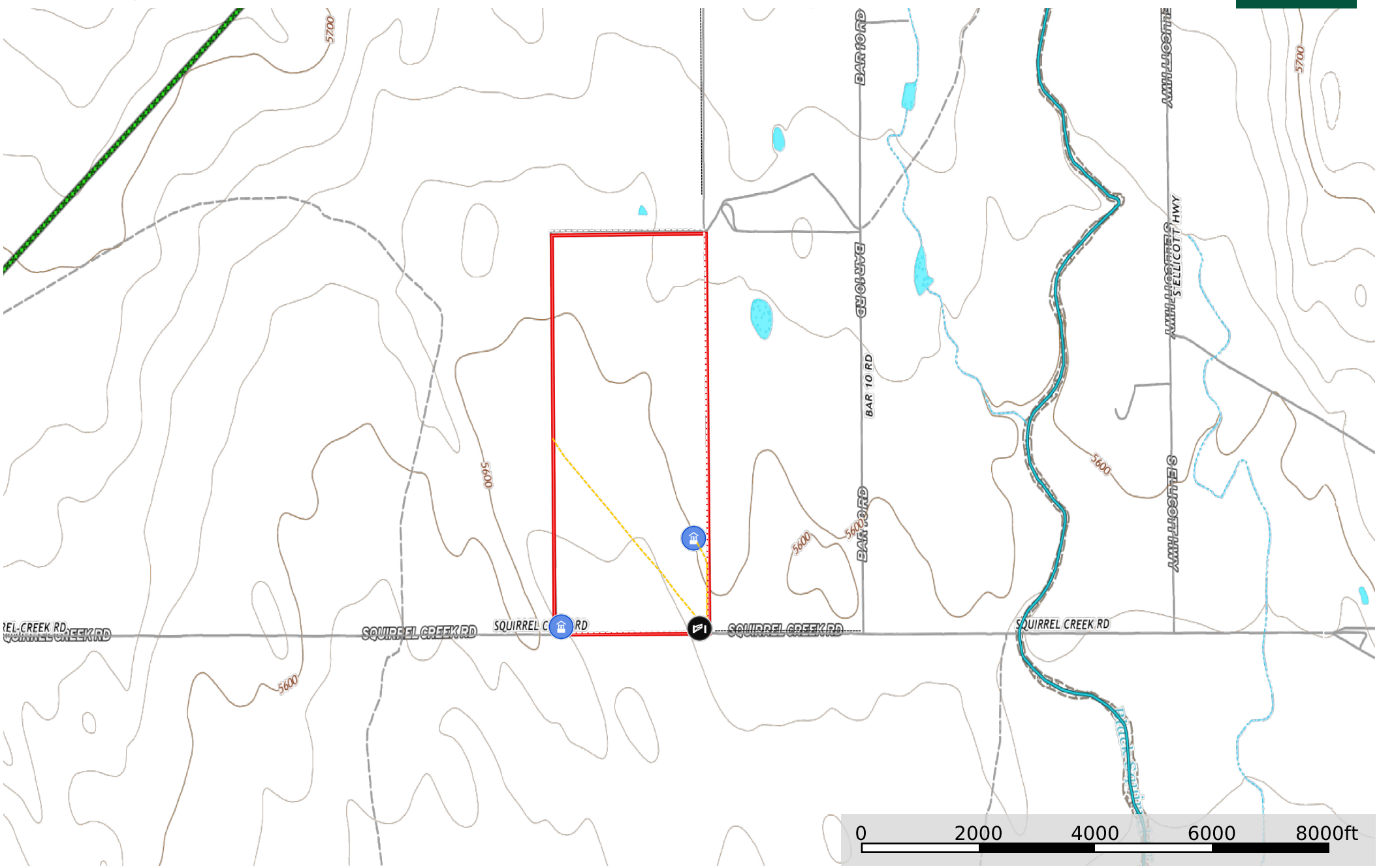


Decoto 320
El Paso County, Colorado, 320 AC +/-



Well

Gate

Road / Trail

Fence

Transmission Line

Boundary

Stream, Intermittent

River/Creek

Water Body

Voltage 500 KV

Voltage 735 KV+

Voltage Unavailable

Voltage 0 - 99 KV

Voltage 100 - 161 KV

Voltage 220 - 287 KV

Voltage 345 KV