



Deep Creek Ranch

106.66 Acres

Catron County, NM

\$1,600,000

HAYDEN  OUTDOORS.

Activities & Amenities

ATV/Off Road
Borders Public Lands
Equestrian/Horse Property
Hiking/Climbing
House/Cabin
Hunting - Big Game, Small Game & Turkey
Off Grid Power
Outbuilding/Barn/Shed/Shop
Solar
Stream/River
Water Rights
Water View
Waterfront
State Hunting Unit: 16a

Land Details

Address: 125 Deep Creek Ranch Rd.,
Glenwood, New Mexico 88039, USA

Closest Town: Alma, NM

Total Acres: 106.66

Deeded Acres: 106.66

Zoning: Ag

Elevation: 5,800

Topography: Rolling hills, live creek, meadows

Vegetation: Black walnut, cottonwoods,
elm, alligator pinion, live oaks, native grass

Water Rights: Yes, 3 wells, 3 acre ft. domestic
livestock water rights +/- 1M gallons/annual

Estimated Taxes: \$408 - 2023

Source of lot size: Assessor/Tax Data

Building Details

Homes: 1

Homes: Log

Style of Home(s): Cabin

Finished Sq. Ft.: 1500

Bedrooms: 3

Full Bathrooms: 2

Basement: None

Outbuildings: 1

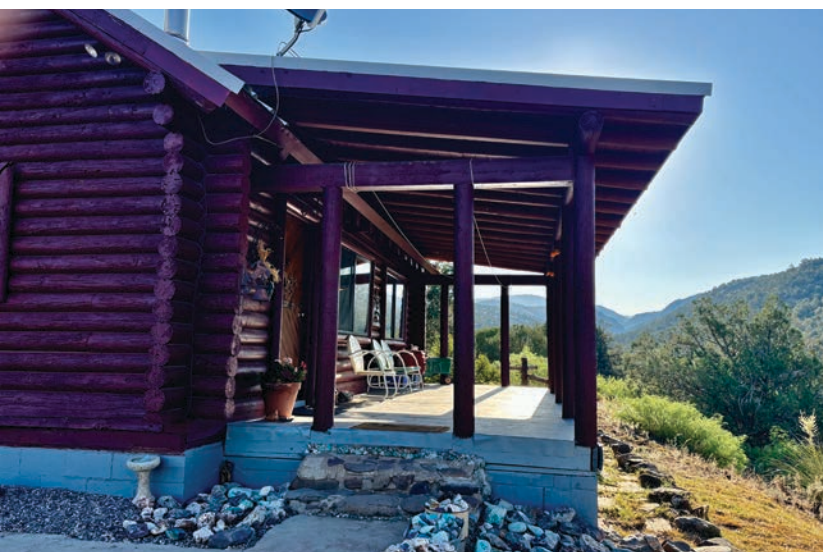
Types of Outbuildings: Metal Barn

Other Improvements: Corrals,
covered horse runs



Property Summary

Being in the same family since the 1950's the ranch consists of +/- 106.6 acres located 6 miles back in the Gila National Forest in BGU 16a. With massive sycamore and Black walnut lined live creek, your setter or German Shorthair can hunt for miles pursuing coveys of both Gambel's & Mearns quail. Qualifying for NM Small Ranch E-Plus elk tags, the ranch has historically drawn a bull tag every other year, alternating with a cow tag(ck regs.).





Land

Horseman's & ATV Paradise

Located 6 miles down a forest maintained road, one pulls into a fully fenced and gated creek bottom, crossing a live creek, surrounded by massive sycamore trees, some 6 ft. across! Black walnut, cottonwoods, elm, alligator pinion and live oaks all frame the creek bottom that is mixed with native grass meadows, creating an absolute wildlife paradise.

First you'll come to the horseman's paradise, with the live creek running through the working area, including the ranch's 30' x 60' metal barn, 2-rail welded fence and covered horse runs, metal pipe working corrals and wood rail corrals. A special gated two-track access trail slips directly out the back of the ranch creating your very own private access into the 3.3 million acre Gila National Forest which consists of hundreds of miles of trails that are perfect for hiking, your side-by-side or horseback riding.

Improvements

Home

Can you imagine the cost to build & construct a home 6 miles back into the National Forest today? No need to think about it. An incredibly well-built and maintained +/-1500 sq. ft. home with 3 bedrooms, 2 baths, perfect size, not overbuilt and is literally turn-key and ready to move in! A covered front porch is enviable, where you'll spend most of your time enjoying the views and watching the wildlife.

Totally off-grid, this ranch has housed residents year-round for over 60 years. Deep Creek Ranch is and has been powered with solar. New, maintenance free batteries have just been installed and there's also a back-up generator. The house has phone access, cell service and internet.





Recreation

Trophy Elk, Gambel's & Mearns Quail, Mule Deer & Coues Whitetails

Known to produce world record and best-in-class elk, 16a unit-wide bull elk tags have sold recently as high as \$25,000! Both mule deer and Coues Whitetail abound in the area and are OTC for landowners. Historically a cattle ranch for generations, the seller sold his cattle grazing leases years ago to conservation groups so no grazing currently exists in the Gila National Forest area surrounding the ranch, which has benefited the wildlife tremendously. Merriam's turkeys and deer are in the creek bottom and around the house daily. Coveys of quail flow through the headquarters like traffic in Dallas... The creek flows year-round (most years) dropping to but a trickle during the driest of years...

Water/Mineral Rights & Natural Resources

The ranch has 3 domestic wells and 3 acre feet of water rights which produce +/- 1M gallons per year. The wells have never been dry.

History

If the state of the world has you thinking about investing in that legacy property to reward your family and yourself, Deep Creek Ranch in the Gila just may be the one! It's a perfect retreat, with potential trophy elk, deer, incredible quail with direct private access into millions of acres of the Gila National Forest.

Call or email today for more information and your qualified showing!





Location

Alma, New Mexico is about 8 miles from the ranch and has the closest gas, groceries and diner. Silver City, approximately an hour away, has additional shopping and amenities. The downtown Historic District is home to more than a dozen restaurants, murals, galleries and artist studios.

Phoenix is about 4 1/2 hours, Tucson 3 1/2 hours, Albuquerque is 4 hrs.

**All information provided is deemed reliable but is not guaranteed and should be independently verified. Hayden Outdoors and its affiliates makes no representation or warranties as to the accuracy, reliability, or completeness of the information, text, property boundaries, graphics links or other items contained in any website, print, or otherwise linked to or from this website. The sale offering is made subject to errors, omissions, change of price, prior sale or withdrawal without notice.*



Hayden Outdoors

Buyer Process

BUYER QUALIFICATION: Each potential purchaser will be evaluated with respect to very specific submission requirements. Confidentiality will be held in the highest regard. Sellers will be made aware of each potential purchaser's ability to perform, should that become their goal.

PROPERTY SHOWINGS: With regard to scheduling showings on your property, Hayden Outdoors understands and respects your livelihood and personal items. The property will be presented to potential purchasers by a Hayden Outdoors representative by appointment only, unless arranged otherwise.

REPRESENTATION OF OFFERS: Hayden Outdoors will advise and support sellers in the presentation and representation of offers. Hayden Outdoors will supply active and current marketing materials when dealing with each potential offer. Offers must be presented in a timely manner, and Hayden Outdoors brokers will travel to present the offers, and in special cases, Hayden Outdoors may execute a webinar for presentation.

BROKER PARTICIPATION: Hayden Outdoors welcomes outside brokers to bring buyers to purchase our properties. We offer cooperating commission rates to participating brokers. All properties marketed with Hayden Outdoors are exclusively promoted and listed through the real estate process.

EQUAL HOUSING: Hayden Outdoors is proud to be an Equal Housing Opportunity Brokerage. All real estate advertised is subject to the Federal Housing Act, which makes it illegal to advertise "any preference, limitation, or discrimination because of race, color, religion, sex, handicap, familial status, or national origin, or intention to make any such preference, limitation, or discrimination."

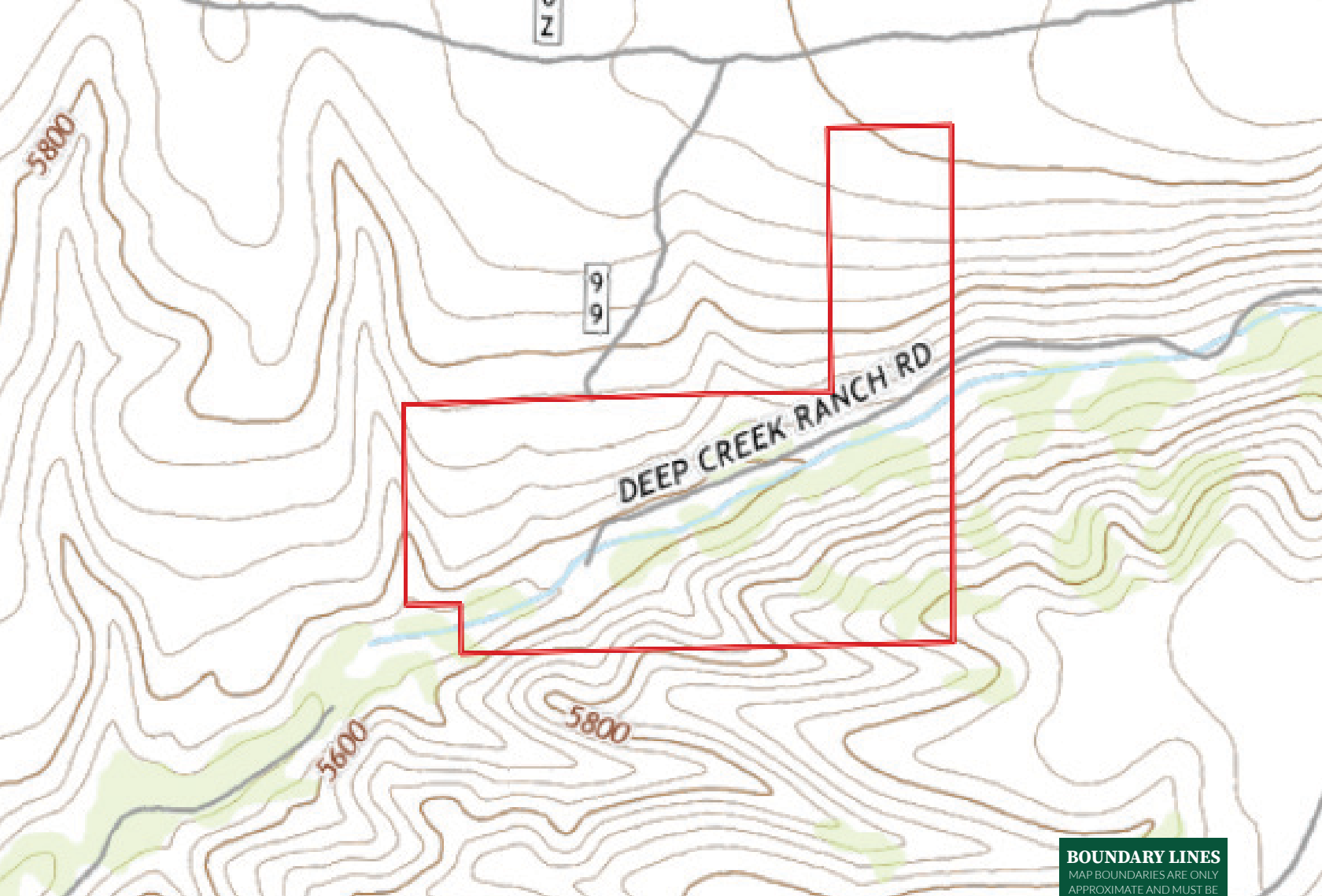


"The service you get transcends anything I've ever heard of. They literally turn your vision into reality. I mean, who else does that for you. Nobody"

- RICK STEINER, SELLER/BUYER

Scan to see more
testimonials





BOUNDARY LINES
 MAP BOUNDARIES ARE ONLY
 APPROXIMATE AND MUST BE
 VERIFIED FOR ACCURACY.

 Boundary



HAYDEN OUTDOORS.

FARM, RANCH & RECREATIONAL REAL ESTATE



Greg Liddle

📍 Licensed in CO & NM
 ✉ Greg@HaydenOutdoors.com
 📞 970.946.0374



Kevin Branum

📍 Broker Associate, Licensed in NM
 ✉ KevinB@HaydenOutdoors.com
 📞 575.760.7460