

Chase County Triple 3 Lots

20.00 Acres | Chase County, NE | \$150,000



HAYDEN  OUTDOORS.

Chase County Triple 3 Lots

TOTAL ACRES:

20.00

PRICE:

\$150,000

COUNTY:

Chase County

CLOSEST TOWN:

Imperial, NE

Land Details

Address: TBD 333 Ave, Imperial, Nebraska 69033, USA

Total Acres: 20.00

Zoning: Ag

Topography: Rolling hills

Vegetation: Native grassland

Property Summary

Check out this rare opportunity.... Available now. three 20-acre lots in Chase County, just minutes south of Imperial. The land features open terrain, expansive views, and a quiet rural setting. Suitable for a homesite, small-scale agriculture, or recreational use. Easy access to Imperial while still offering privacy. A simple, flexible option for those looking for space in southwest Nebraska.

Land

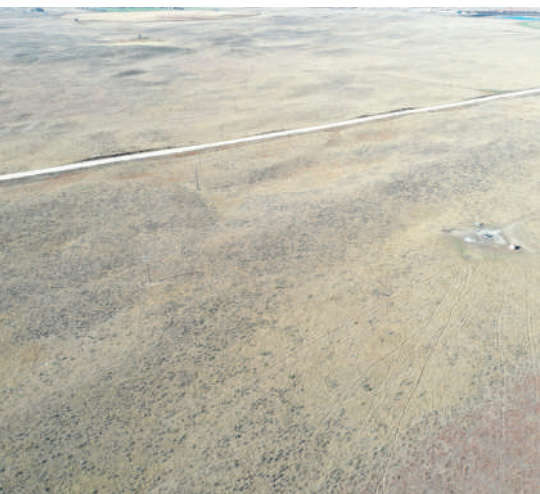
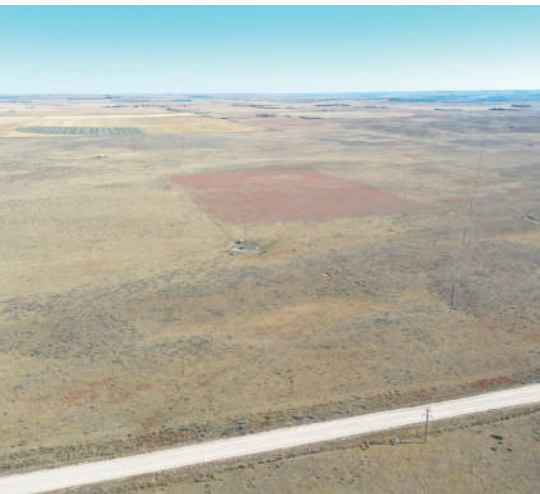
Each 20-acre parcel lies among the rolling hills of Chase County, offering a landscape shaped by gentle slopes, open horizons, and well-established native grass communities. The terrain supports a mix of warm-season grasses and natural prairie habitat, providing a quiet setting with a strong sense of space and openness. With its varied topography and undisturbed vegetation, the property suits those looking for land to build on, graze, or simply enjoy the character of the southwest Nebraska prairie. Recently surveyed the lots are easily identified.

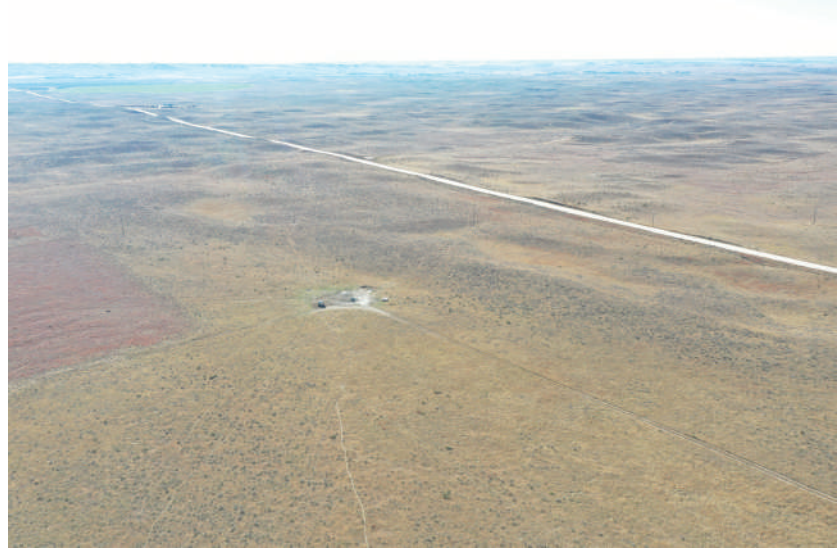
Recreation

Southwest Nebraska is an outdoor recreation paradise, offering exceptional hunting, fishing, and year-round adventure. Imperial sits in the coveted Frenchman Unit for mule deer—one of Nebraska's premier areas for producing high-quality bucks. The region has long been known for strong pheasant populations, with consistently good bird numbers and excellent habitat. Thousands of acres of public walk-in hunting are easily accessible, and the Balcony House is just a short drive from northwest Kansas and northeast Colorado, giving hunters the rare opportunity to pursue game in all three states in a single day.

The property is also conveniently located near several lakes and reservoirs, including Enders Reservoir State Recreation Area (4 miles), Lake McConaughy (60 miles), and Swanson Lake, Rock Creek SWA, and Hugh Butler Lake—all within 45 minutes. These waters offer outstanding fishing, water sports, waterfowl hunting, and big-game opportunities.

Additionally, the property is only five minutes from Enders Lake Golf Course, a well-established 9-hole course featuring a driving range and a welcoming clubhouse known for its excellent meals.





Region & Climate

Chase County, Nebraska, sits within the Great Plains, a landscape defined by gently rolling terrain and mixed-grass prairie. The county experiences a continental climate, with warm to hot summers, cold winters, and annual precipitation of roughly 20–25 inches, most of which falls from late spring through early summer. Periodic dry spells and occasional severe weather—including thunderstorms and winter snowstorms—are common. These conditions support a resilient mix of native grasses and productive agricultural land, accommodating ranching, irrigated cropland, and dryland farming.

Location

The lots sit just a short 2 minute drive south of Imperial, Nebraska on 333 Ave.

**All information provided is deemed reliable but is not guaranteed and should be independently verified. Hayden Outdoors and its affiliates makes no representation or warranties as to the accuracy, reliability, or completeness of the information, text, property boundaries, graphics links or other items contained in any website, print, or otherwise linked to or from this website. The sale offering is made subject to errors, omissions, change of price, prior sale or withdrawal without notice.*

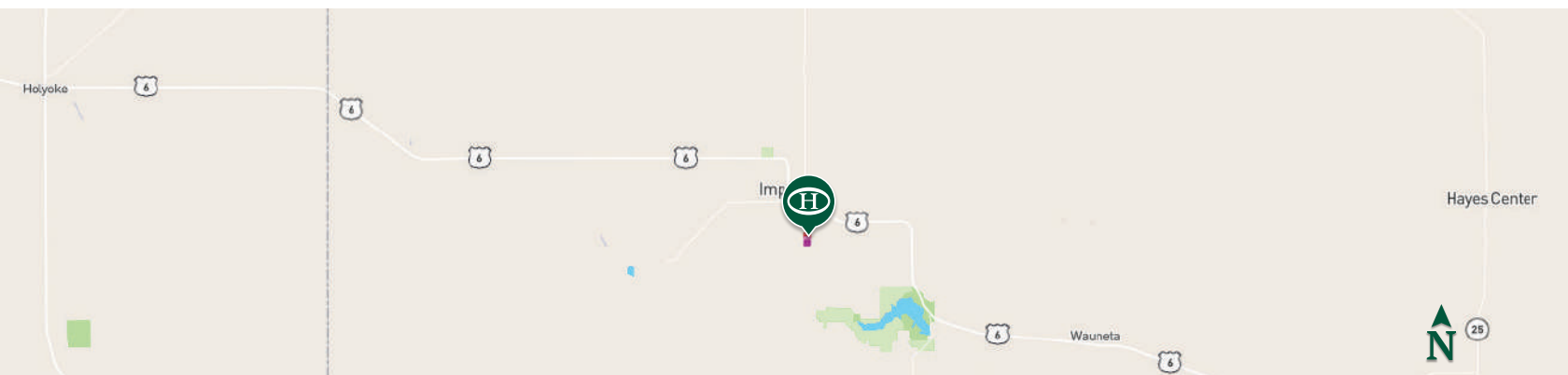




 Boundary

BOUNDARY LINES

MAP BOUNDARIES ARE ONLY
APPROXIMATE AND MUST BE
VERIFIED FOR ACCURACY.



Clay Owens

📍 Licensed in CO, KS, NE & WY

✉ Clay@HaydenOutdoors.com

📞 308.882.8171


**HAYDEN
OUTDOORS.**
REAL ESTATE

