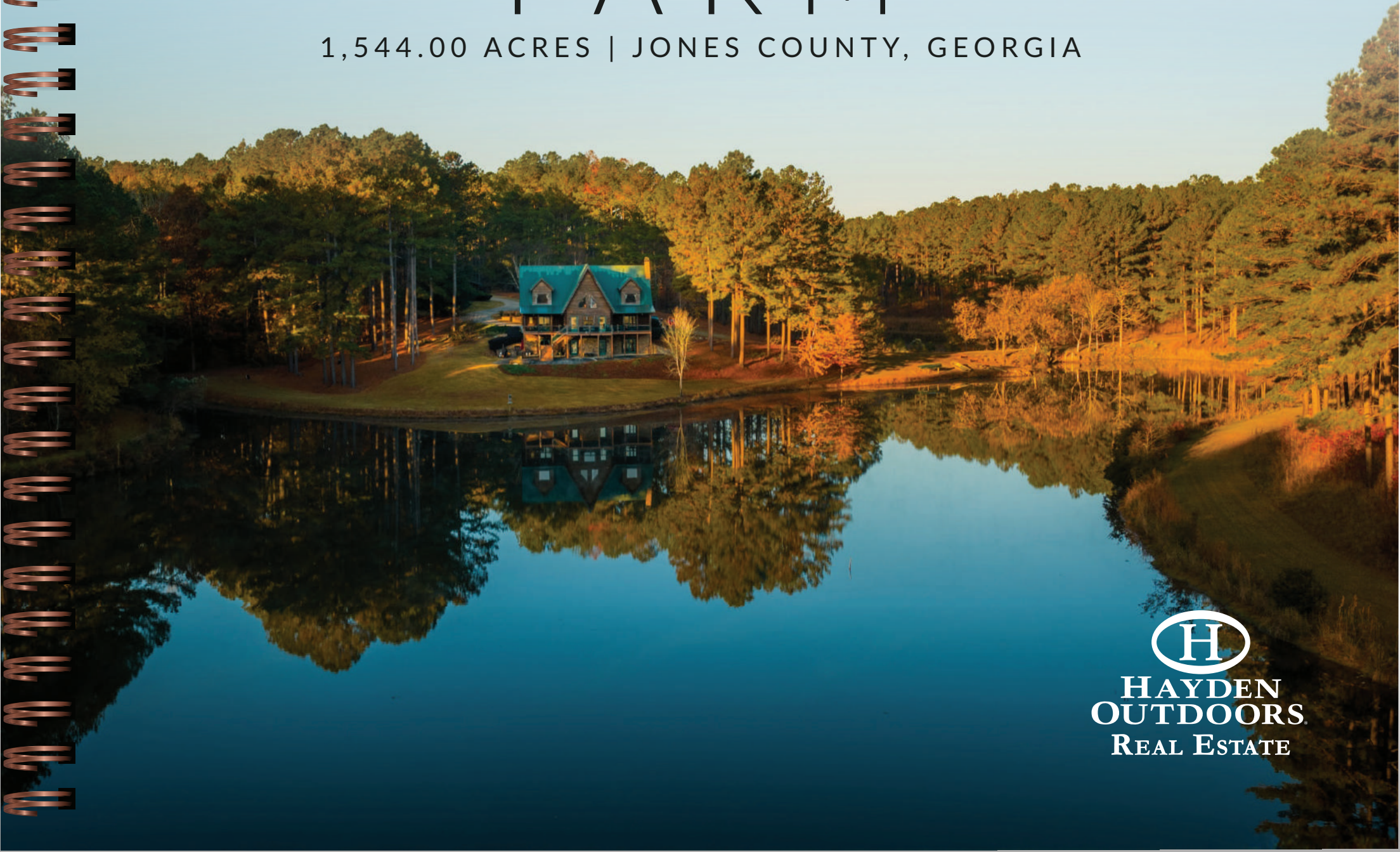


# BUCKLEW FARM

1,544.00 ACRES | JONES COUNTY, GEORGIA



  
HAYDEN  
OUTDOORS  
REAL ESTATE





# BUCKELEW FARM



	OVERVIEW
	LAND
	IMPROVEMENTS
	RECREATION
	AGRICULTURE
	REGION & CLIMATE
	LOCATION
	MAPS



# OVERVIEW



## WELCOME TO BUCKELEW FARM



### QUICK FACTS

1,544 Acres  
Farm  
Hunting  
Plantation  
Ranch  
Recreational  
Residential  
Timberland  
Waterfront

Located just minutes from historic Macon, Georgia, Buckelew Farm offers 1,544 acres of pristine woods, creeks, a 20-acre lake, and 20+ miles of trails. Buckelew Farm checks every box for premier hunting, fishing, and all outdoor enjoyment. A custom lodge, barns, and well managed land make this the ultimate private retreat—an enduring legacy for generations to come.



# LAND



Miles of scenic trails and roads invite exploration across the diverse landscape. Majestic pine stands provide a sanctuary for wild quail, while miles of shaded creeks and hardwood bottoms support thriving populations of deer and turkey. A beautifully maintained 20-acre lake, complemented by a duck pond and planted dove field, enhances the property's appeal for sportsmen and family enjoyment. For the outdoor enthusiast or family retreat, Buckelew Farm offers countless pursuits—from fishing and hunting to ATV/UTV riding, horseback riding, hiking, and wildlife photography.





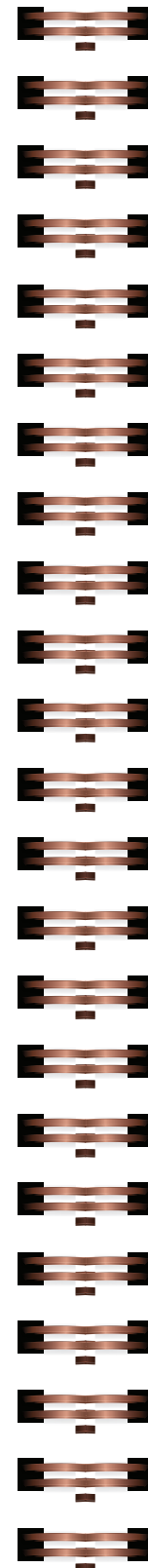
# IMPROVEMENTS



At the heart of the estate sits a custom-built 4,000-square-foot lodge, artfully designed for comfort and entertaining. The five-bedroom, four-and-a-half-bath residence includes modern amenities, a spacious office, porches, patios, and a finished basement recreation area with a full bar and masonry fireplace. Supporting improvements include a manager's home, multiple equipment barns, workshops, and outbuildings—providing everything needed for seamless land management or a private family retreat. A designated building site across the lake also allows for future expansion or guest quarters.









# RECREATION



This exceptional property offers a 20-acre private lake with duck pond, a managed dove field, multiple deer stands, and a 1,200-yard rifle range. With 20 miles of internal trails, two miles of road frontage, and ideal terrain for ATV/UTV riding, horseback riding, and hiking, it delivers unmatched recreation and year-round outdoor enjoyment. Buckelew Farm also features ideal quail habitat with well-managed pine stands, diverse understory cover, and thoughtfully maintained openings that provide abundant feeding and nesting areas.

## FEATURES

- |   |                            |
|---|----------------------------|
| ATV/Off Road  | Lodge/Resort               |
| Boating/Sailing/Rafting   | Natural Spring             |
| Conservation Easement   | Outbuilding/Barn/Shed/Shop |
| Cycling/Mountain Biking   | Pond/Lake                  |
| Farm/Crops/Ag   | Stream/River               |
| Fishing   | Timber                     |
| Food Plots  | Water Access               |
| Hiking/Climbing   | Water View                 |
| House/Cabin   | Waterfront                 |
| Hunting - Big Game, Predator/Varmint, Small Game, Turkey, Upland Birds, Waterfowl | Wooded                     |
|   | Water Rights               |





# AGRICULTURE



Recognized as Georgia Tree Farm of the Year in both 2006 and 2016, Buckelew Farm has long been celebrated for its dedication to responsible land and timber management. The property's timber stands are expertly managed, blending mature pine and mature hardwoods to create both ecological, aesthetic, and economic value. Protected under a Working Forest Conservation Easement, the property ensures long term stewardship—preserving wildlife habitat, water quality, and timber resources for generations to come.





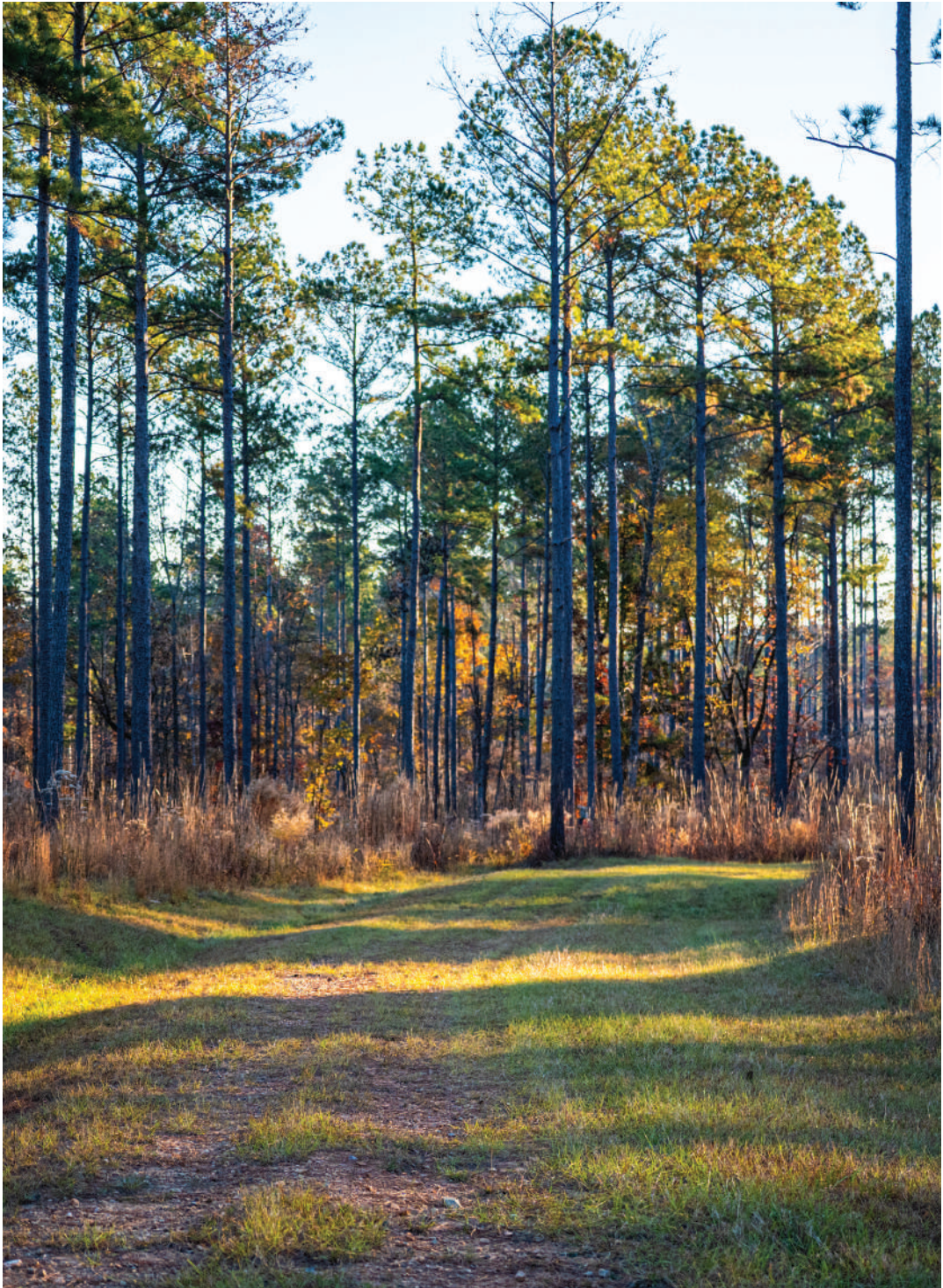
# REGION & CLIMATE



Located in the heart of central Georgia, the property lies within a region known for its rolling terrain, rich soils, and diverse wildlife habitat. The area experiences a mild, four-season climate with warm summers, cool winters, and long growing seasons that support robust forestry and agricultural production. Reliable rainfall and temperate weather make the region ideal for year-round outdoor recreation, land management, and wildlife conservation.

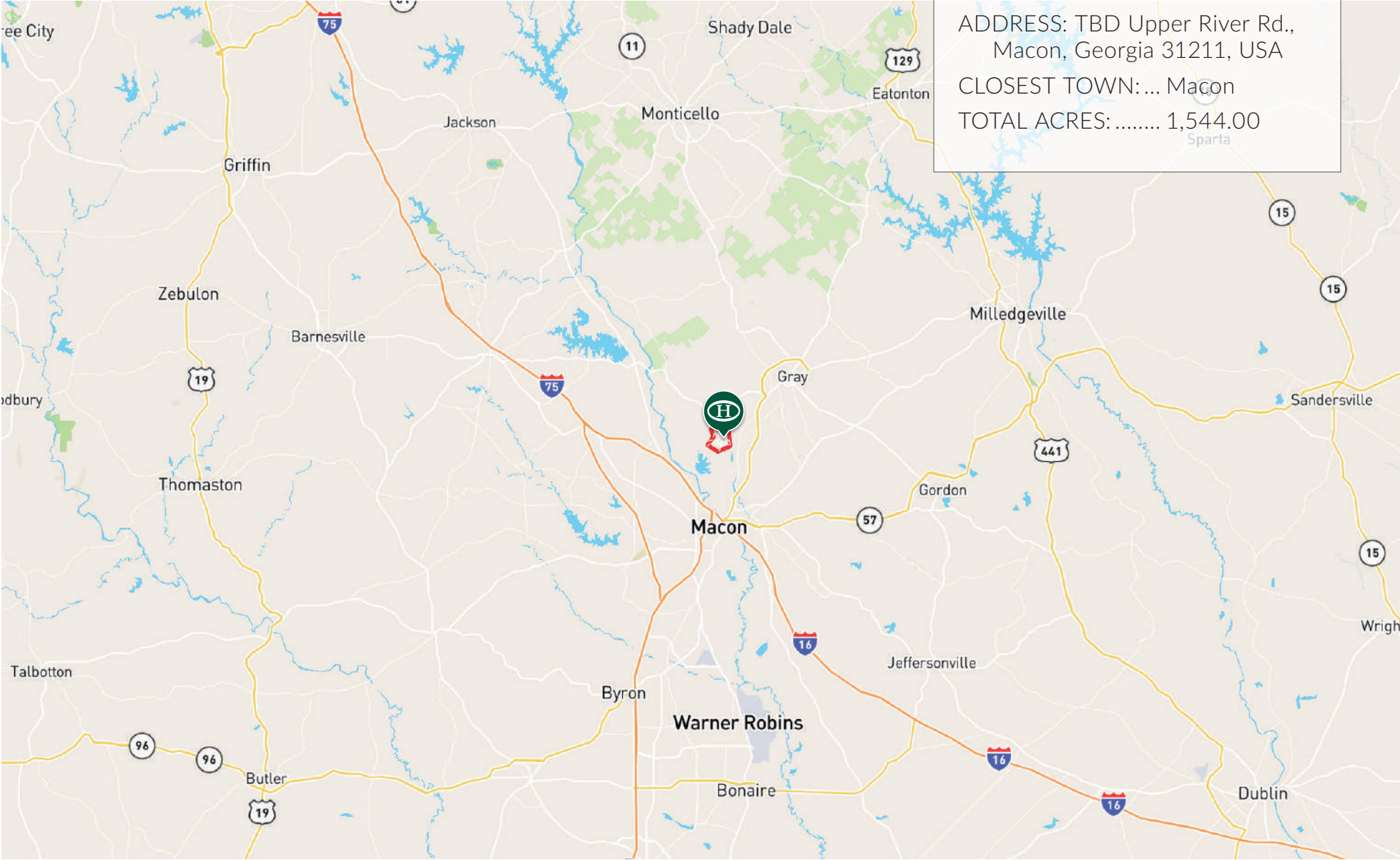
## LOCATION

Bucklelew Farm offers the tranquility of rural Georgia while remaining exceptionally accessible. It sits less than 10 minutes from Macon, just 10 miles from Middle Georgia Regional Airport, and about 85 miles from Hartsfield–Jackson Atlanta International Airport, with Atlanta and Athens both an easy 1.5-hour drive.

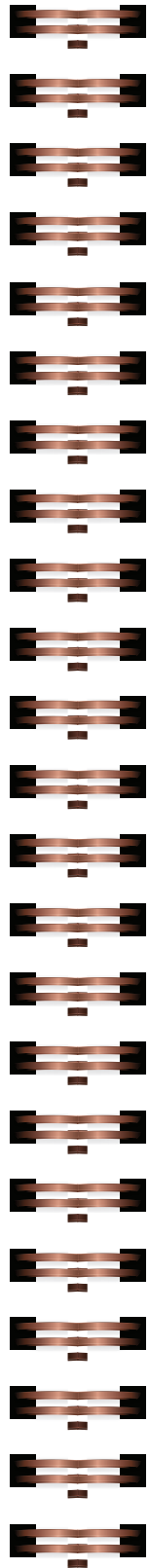




# MAPPING



**BUCKELEW FARM**  
ADDRESS: TBD Upper River Rd.,  
Macon, Georgia 31211, USA  
CLOSEST TOWN: ... Macon  
TOTAL ACRES: ..... 1,544.00







*Exclusively Presented By:*

**Christopher Buchanan**

Salesperson  
Licensed in GA  
478.456.6407

[ChrisBuchanan@HaydenOutdoors.com](mailto:ChrisBuchanan@HaydenOutdoors.com)

**John Boehmig**

Supervising Broker in GA & AL  
Licensed in AL, CO, GA, MS & TN  
706.905.8531

[JohnBoehmig@HaydenOutdoors.com](mailto:JohnBoehmig@HaydenOutdoors.com)

[www.HaydenOutdoors.com](http://www.HaydenOutdoors.com)



**HAYDEN  
OUTDOORS**  
REAL ESTATE