

Lander Mountain Creekside Retreat

20.07 Acres

Fremont County, WY

\$1,500,000



HAYDEN  OUTDOORS.

Activities & Amenities

ATV/Off Road
Campground
Cycling/Mountain Biking
Fishing
Hiking/Climbing
House/Cabin
Hunting - Big Game
Hunting - Predator/Varmint
Hunting - Small Game
Off Grid Power
Pond/Lake
Propane
Skiing/Snowmobiling/Snow Sports
Solar
Stream/River
Water View
Waterfront
Wooded
State Hunting Unit: Elk 28,
Deer 92, Antelope 65

Land Details

Address: 515 Lander Mountain Road,
Lander, Wyoming 82520, USA
Closest Town: Lander
Total Acres: 20.07
Deeded Acres: 20.07
Leased Acres: 0.00
Estimated Taxes: \$2,434 - 2024
Source of lot size: Assessor/Tax Data

Building Details

Price: \$1,500,000
Homes: 1
Style of Home(s): 2 Story
Finished Sq. Ft.: 1120
Bedrooms: 2
Full Bathrooms: 1
Three-Quarter Bathrooms: 1
Basement: None
Outbuildings: 2
Types of Outbuildings:
10X20 Storage Shed
10X12 Bunkhouse
Heating Systems:
Wood Stove



Property Summary

Located in the private, gated Homestead Park subdivision, 515 Lander Mountain Road offers private access to Shoshone National Forest, a 1,120 sq ft cabin, and five individual lots. The 20.07 acres boasts of nearly 1/4 mile of Sheep Creek, with eight ponds winding through the land, plentiful with trout. This private forest retreat features mature trees, lush ground, live water, private well and an abundance of elk, deer and other wildlife.





Land

This 20.07 acre property on Lander Mountain Road is a rare piece of mountain ground made up of five individual lots, four of which are vacant and ready for future use or expansion. Tucked behind a private gate in the premier Homestead Park community, the land offers direct access to the Shoshone National Forest from multiple points. A quarter mile of Sheep Creek winds through the property, feeding eight unique ponds, each full of fish. This steady water source draws in a rich variety of wildlife, with elk and deer moving through the area regularly, along with moose, small game, and other mountain species. The terrain is classic mountain country with a mix of spruce, pine, and quaking aspen that provide cover and beauty year round. The property is located in an over the counter hunting area for both deer and elk, making it an ideal base for hunting, fishing, and enjoying the outdoors in a private and scenic setting. Each lot has road access, giving you flexibility for use and development.





Improvements

The 1,120 square foot cabin features two bedrooms and two bathrooms, powered by solar with a private well. The open concept living area with vaulted ceilings and large windows bring in natural light and showcase the surrounding forest. The kitchen includes plenty of counter space, room for dining, and flows into the cozy living room centered around a wood stove. A wraparound covered deck offers the perfect place to watch wildlife or keep an eye on family fishing in the nearby ponds. Heat is provided by wood or propane. The property also includes a 10×12 bunkhouse with a front deck, a 10×20 storage shed, and a well-built outdoor cooking area with its own large rock counter, ideal for campfire meals and family gatherings.





Recreation

This area is perfect for anyone who loves the outdoors. The property includes private access to the Shoshone National Forest, where you can hike, ride, and explore miles of rugged country. It's in a general tag area for both elk and mule deer and is well known for producing trophy animals. Elk and deer are often seen on the property and throughout the area. Sheep Creek and the ponds on the land offer easy fishing, just steps from the cabin, with more streams and mountain lakes nearby. Whether you're hunting, fishing, or just enjoying the outdoors, this is a rare chance to own real mountain ground with true endless access to all that Wyoming offers.

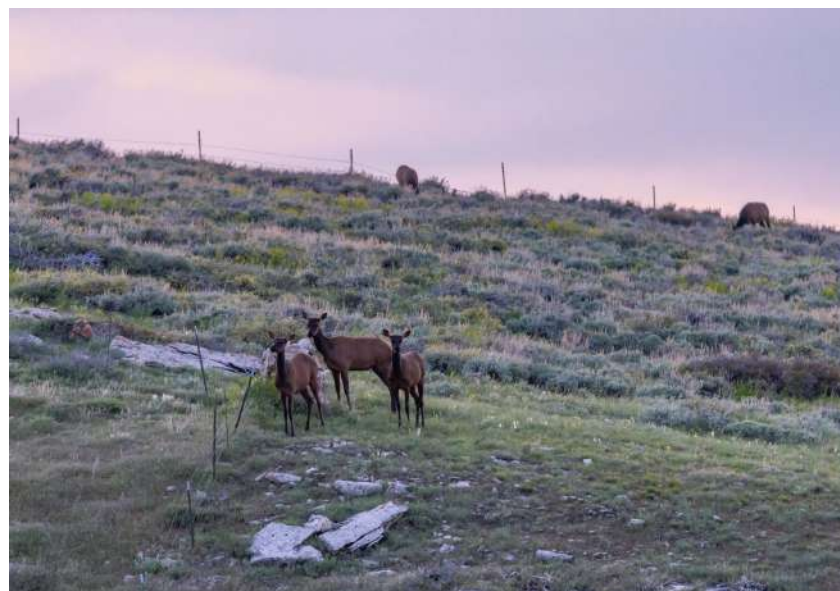
Region & Climate

The Lander Mountain area has a true mountain feel with cooler summers, moderately snowy winters, and fresh air year round. It sits just outside of Lander, a small town known for access to public land, hunting, and fishing. The area is quiet and laid back with plenty of space and wildlife. It's a great spot for anyone looking to enjoy the outdoors and a slower pace of life.

Location

Lander is located in central Wyoming's Wind River Basin along the Middle Fork of the Popo Agie River. It sits about 30 miles from the nearest regional airport in Riverton. Salt Lake City is roughly a four hour drive southwest, and Yellowstone's south entrance is just a couple hours to the northwest. This location offers a good balance of mountain living with access to larger cities and travel hubs.

*All information provided is deemed reliable but is not guaranteed and should be independently verified. Hayden Outdoors and its affiliates makes no representation or warranties as to the accuracy, reliability, or completeness of the information, text, property boundaries, graphics links or other items contained in any website, print, or otherwise linked to or from this website. The sale offering is made subject to errors, omissions, change of price, prior sale or withdrawal without notice.



Hayden Outdoors *Buyer Process*

BUYER QUALIFICATION: Each potential purchaser will be evaluated with respect to very specific submission requirements. Confidentiality will be held in the highest regard. Sellers will be made aware of each potential purchaser's ability to perform, should that become their goal.

PROPERTY SHOWINGS: With regards to scheduling showings on your property, Hayden Outdoors understands and respects your livelihood and personal items. The property will be presented to potential purchasers by a Hayden Outdoors representative by appointment only, unless arranged otherwise.

REPRESENTATION OF OFFERS: Hayden Outdoors will advise and support sellers in the presentation and representation of offers. Hayden Outdoors will supply active and current marketing materials when dealing with each potential offer. Offers must be presented in a timely manner, and Hayden Outdoors brokers will travel to present the offers, and in special cases, Hayden Outdoors may execute a webinar for presentation.

BROKER PARTICIPATION: Hayden Outdoors welcomes outside brokers to bring buyers to purchase our properties. We offer cooperating commission rates to participating brokers. All properties marketed with Hayden Outdoors are exclusively promoted and listed through the real estate process.

EQUAL HOUSING: Hayden Outdoors is proud to be an Equal Housing Opportunity Brokerage. All real estate advertised is subject to the Federal Housing Act, which makes it illegal to advertise "any preference, limitation, or discrimination because of race, color, religion, sex, handicap, familial status, or national origin, or intention to make any such preference, limitation, or discrimination."

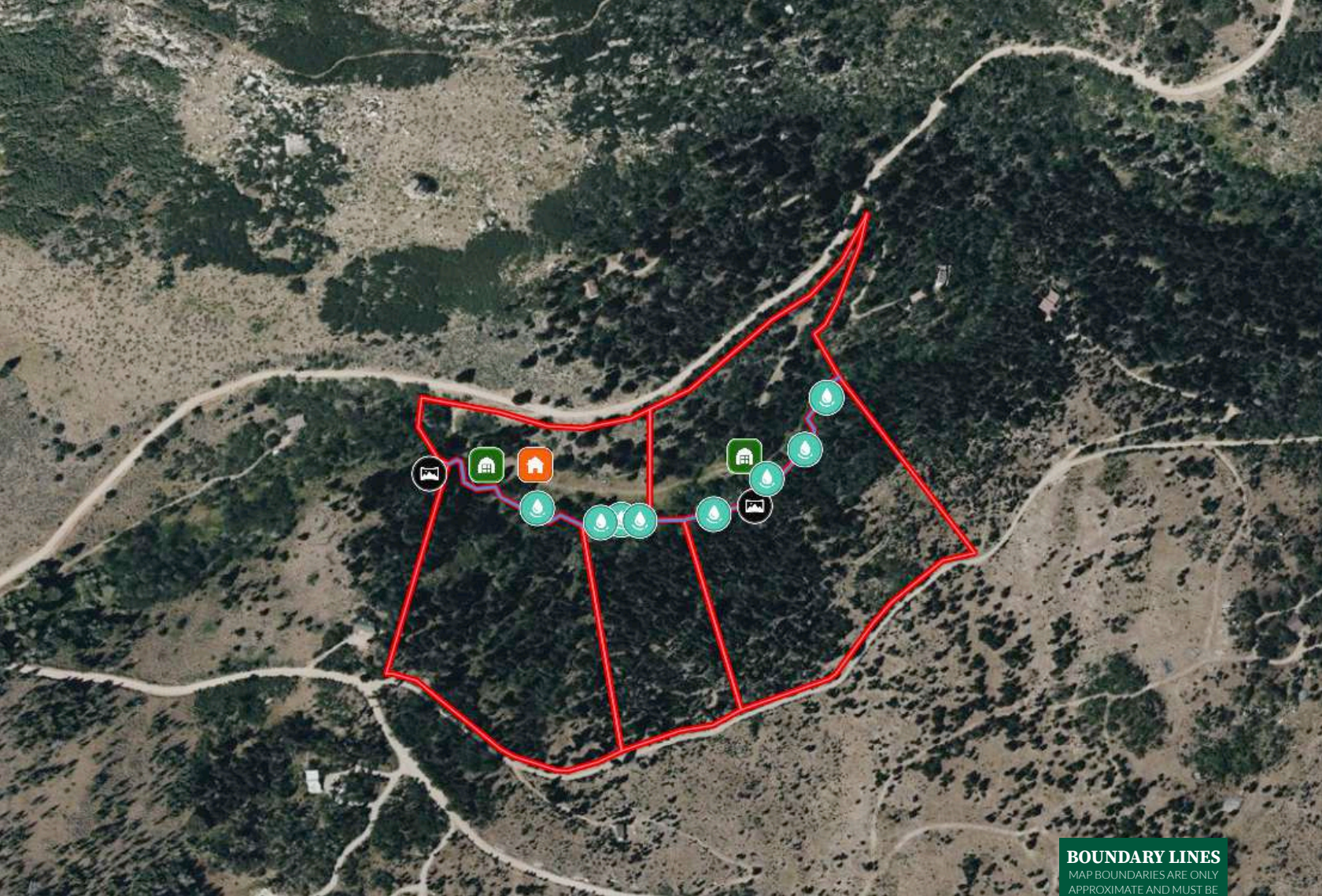


"The service you get transcends anything I've ever heard of. They literally turn your vision into reality. I mean, who else does that for you. Nobody"

- RICK STEINER, SELLER/BUYER

Scan to see more
testimonials





HAYDEN OUTDOORS.

FARM, RANCH & RECREATIONAL REAL ESTATE



Jesse Webb

📍 Licensed in WY
✉️ Jesse@HaydenOutdoors.com
📞 307.840.5491



Cody Jacks

📍 Licensed in NE & WY
✉️ Cody@HaydenOutdoors.com
📞 307.349.2215