

Cave Creek Cabin

36.32 Acres

Park County, CO

\$995,000



HAYDEN  OUTDOORS.



Activities & Amenities

ATV/Off Road
Borders Public Lands
Equestrian/Horse Property
Fishing
Hiking/Climbing
House/Cabin
Hunting - Big Game
Hunting - Predator/Varmint
Hunting - Small Game
Outbuilding/Barn/Shed/Shop
Propane
State Hunting Unit: 49

Land Details

Address: 1177 Cave Creek Rd.,
Fairplay, Colorado 80440, USA
Closest Town: Fairplay
Total Acres: 36.32
Deeded Acres: 36.32
Zoning: SFR
Elevation: 10,000' - 10,100' +/-
Estimated Taxes: \$3,249 - 2024
Source of lot size: Other

Building Details

Homes: 1
Style of Home(s): Log Cabin
Finished Sq. Ft.: 2,065
Bedrooms: 3
Full Bathrooms: 2
Basement: Partial finished
Parking Types: Detached Garage
Total # of Spaces: 4
Outbuildings: 1



Property Summary

Cave Creek Cabin, nestled in the scenic landscapes of Fairplay, CO, offers 36.32± acres of pristine mountain terrain. This charming 2,065± SF log cabin provides a perfect blend of rustic comfort and modern convenience. Bordering the Pike National Forest at the northwest corner, the property offers direct access to the highly sought-after GMU 49, making it an ideal retreat for outdoor enthusiasts and avid hunters alike.





Land

This 36.32± acre property features gently sloping land with a beautiful mix of mature aspens and open, grassy meadows. A peaceful creek winds through the heart of the property, adding to its charm. Accessed off Cave Creek Road, the property feels incredibly private and tucked away, sitting at the end of a gated, dead-end road. The cabin and shop are perfectly placed in a secluded spot surrounded by aspens, offering a quiet, peaceful setting to relax and enjoy the outdoors.

Improvements

Built in 1997, this spacious 2,065± SF log cabin is the perfect mountain getaway, designed with plenty of room to host large groups of family and friends. It features three bedrooms and two bathrooms, with one of the bedrooms tucked into the loft—complete with extra bunk space that's great for kids or additional guests. The layout includes two comfortable living and gathering areas, one on the main level and another in the finished basement, giving everyone room to spread out and relax. The main floor is complete with a full kitchen, and a cozy wood-burning stove. The cabin is powered by a reliable solar system with a backup generator in place for peace of mind. Just a short walk from the cabin is a large barn that offers excellent covered storage, ideal for equipment, recreational toys, or even horses. Whether you're looking for a quiet retreat, a basecamp for hunting, or a place to gather on the weekends, this property has everything needed to experience mountain recreating at its finest.





Recreation

Cave Creek Cabin sits in GMU 49, one of Colorado's premier elk hunting units known for consistently producing trophy caliber bulls. In addition to world-class hunting, the property offers private access to nearby fishing, giving outdoor enthusiasts even more to enjoy. The surrounding Fairplay area is packed with recreational opportunities, including hiking, mountain biking, skiing, and an abundance of public fishing spots. Whether you're looking for adventure or relaxation, this location offers the perfect mix of both all within close proximity to major towns.

Location

Fairplay, Colorado is conveniently located about 2 hours southwest of Denver International Airport, making it easily accessible for weekend getaways or longer stays. It's roughly 2.5 hours from Fort Collins and just over an hour from popular mountain towns like Breckenridge, Buena Vista, and Salida. The area offers easy access to world-class skiing, hiking, fishing, and hot springs, with local shops, dining, and amenities available right in Fairplay.

*All information provided is deemed reliable but is not guaranteed and should be independently verified. Hayden Outdoors and its affiliates makes no representation or warranties as to the accuracy, reliability, or completeness of the information, text, property boundaries, graphics links or other items contained in any website, print, or otherwise linked to or from this website. The sale offering is made subject to errors, omissions, change of price, prior sale or withdrawal without notice.





Hayden Outdoors

Buyer Process

BUYER QUALIFICATION: Each potential purchaser will be evaluated with respect to very specific submission requirements. Confidentiality will be held in the highest regard. Sellers will be made aware of each potential purchaser's ability to perform, should that become their goal.

PROPERTY SHOWINGS: With regard to scheduling showings on your property, Hayden Outdoors understands and respects your livelihood and personal items. The property will be presented to potential purchasers by a Hayden Outdoors representative by appointment only, unless arranged otherwise.

REPRESENTATION OF OFFERS: Hayden Outdoors will advise and support sellers in the presentation and representation of offers. Hayden Outdoors will supply active and current marketing materials when dealing with each potential offer. Offers must be presented in a timely manner, and Hayden Outdoors brokers will travel to present the offers, and in special cases, Hayden Outdoors may execute a webinar for presentation.

BROKER PARTICIPATION: Hayden Outdoors welcomes outside brokers to bring buyers to purchase our properties. We offer cooperating commission rates to participating brokers. All properties marketed with Hayden Outdoors are exclusively promoted and listed through the real estate process.

EQUAL HOUSING: Hayden Outdoors is proud to be an Equal Housing Opportunity Brokerage. All real estate advertised is subject to the Federal Housing Act, which makes it illegal to advertise "any preference, limitation, or discrimination because of race, color, religion, sex, handicap, familial status, or national origin, or intention to make any such preference, limitation, or discrimination."

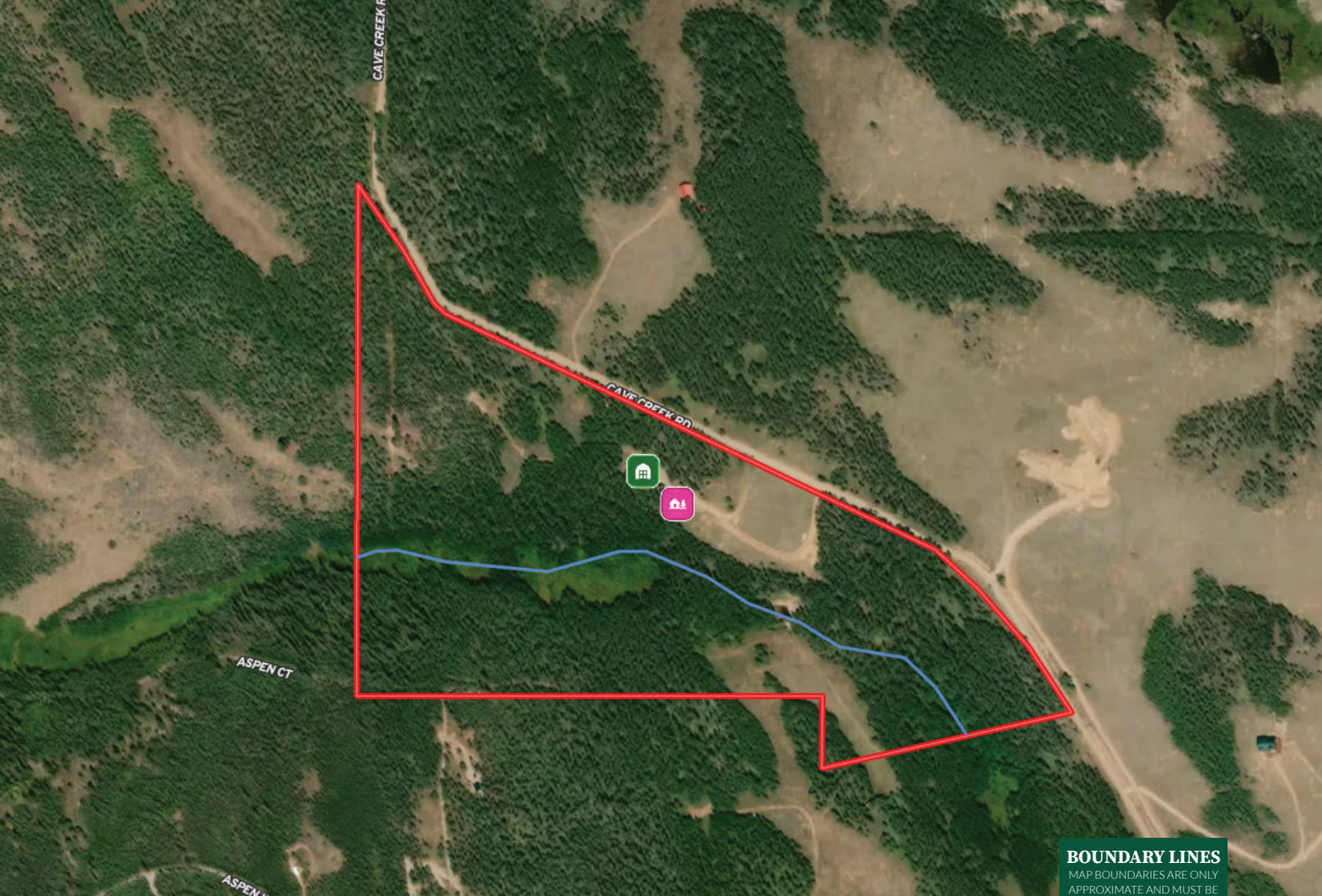


"The service you get transcends anything I've ever heard of. They literally turn your vision into reality. I mean, who else does that for you. Nobody"

- RICK STEINER, SELLER/BUYER

Scan to see more
testimonials

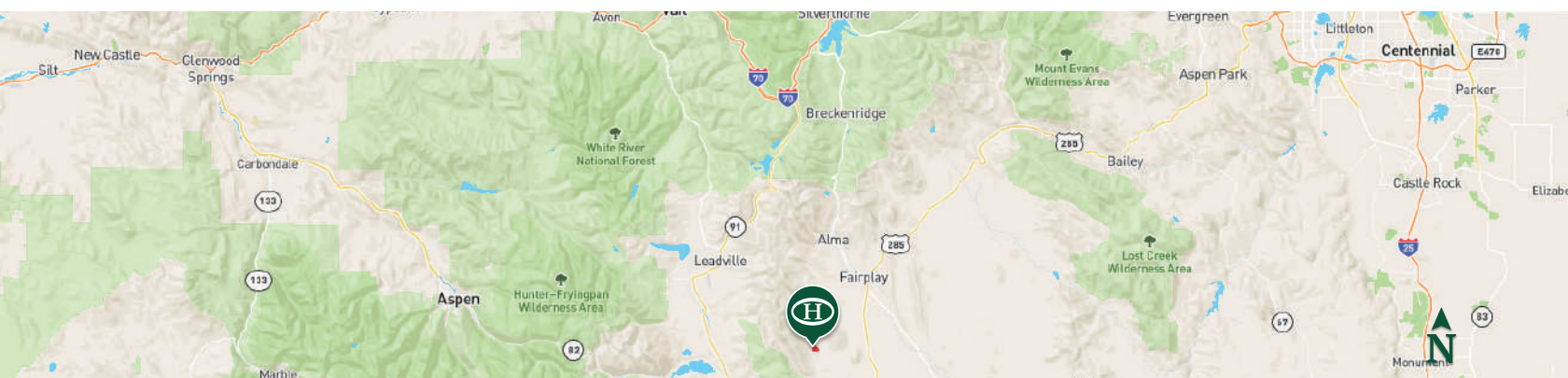




BOUNDARY LINES

MAP BOUNDARIES ARE ONLY APPROXIMATE AND MUST BE VERIFIED FOR ACCURACY.

Boundary Cabin Shed / Shack



HAYDEN OUTDOORS

FARM, RANCH & RECREATIONAL REAL ESTATE



Chase Hinson

📍 Associate Broker
Licensed in CO, FL, KS, NE & WY
✉ ChaseHinson@HaydenOutdoors.com
📞 970.590.3197

Zack Wiese

📍 Broker Associate,
Licensed in CO & WY
✉ Zack@HaydenOutdoors.com
📞 970.889.3142

