



Jacksonville Development Tract

28.00 Acres

Onslow County, NC

\$350,000

HAYDEN  OUTDOORS.

Jacksonville Development Tract

TOTAL ACRES:

28.00

PRICE:

\$350,000

COUNTY:

Onslow County

CLOSEST TOWN:

Jacksonville, NC

Activities & Amenities:

Development Potential
Stream/River
Timber
Waterfront
Wooded

Land Details:

Address: 180 Summersill School Rd,
Jacksonville, North Carolina 28540, USA
Closest Town: Jacksonville
Total Acres: 28.00
Deeded Acres: 28.11
Zoning: RA
Vegetation: Timber
Source of lot size: Assessor/Tax Data

About This Property

28 acres right in the heart of growth in Onslow County, between Jacksonville and Richlands. With over 450 feet of road frontage and multiple perc sites, this property is prime for small development! Summersill School Road also contains access to county water. Don't miss out on this development tract, soil tests and surveys on hand! Call Andrew Cobb (919)631-2813 today to schedule your private showing!

Land

Property consists of mixed timber, falling back towards Half Moon Creek. The backside of the property offers a natural 13 acre wetland buffer.

Region & Climate

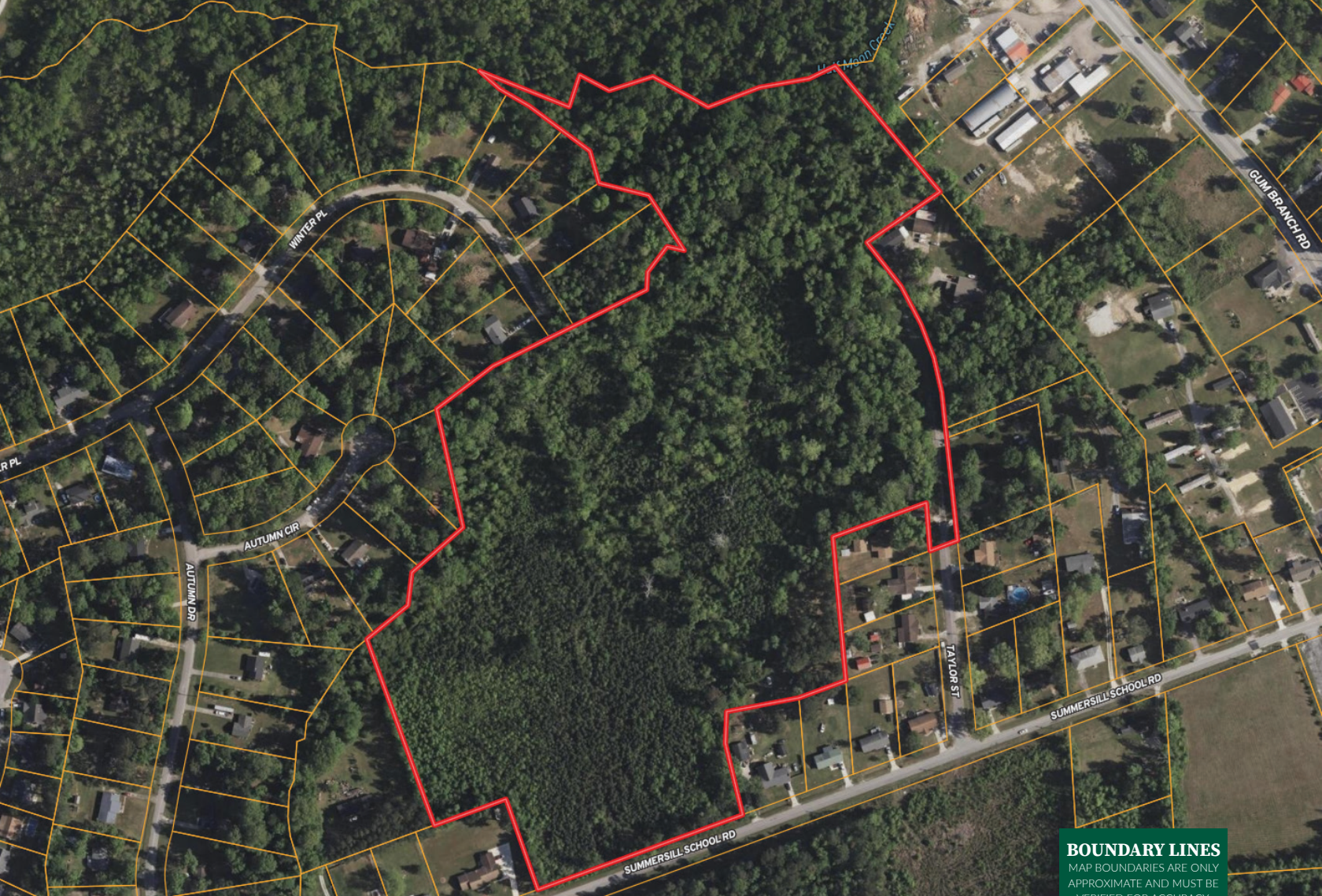
Jacksonville, NC has a humid subtropical climate, characterized by hot, humid summers and mild winters. Summer temperatures typically range from the mid-80s to low 90s Fahrenheit, with high humidity levels. Winters are generally mild, with temperatures averaging in the 40s and 50s. Jacksonville experiences moderate rainfall throughout the year, with the wettest months typically being in the summer. The area can also be prone to tropical storms and hurricanes during the Atlantic hurricane season, which runs from June to November.

Location

- 59 Miles from Wilmington International Airport
- 84 Miles from Raleigh Durham International Airport
- 14 Miles from Camp Lejeune
- 57 Miles from Swansboro
- 40 Miles from Topsail Beach

*All information provided is deemed reliable but is not guaranteed and should be independently verified. Hayden Outdoors and its affiliates makes no representation or warranties as to the accuracy, reliability, or completeness of the information, text, property boundaries, graphics links or other items contained in any website, print, or otherwise linked to or from this website. The sale offering is made subject to errors, omissions, change of price, prior sale or withdrawal without notice.

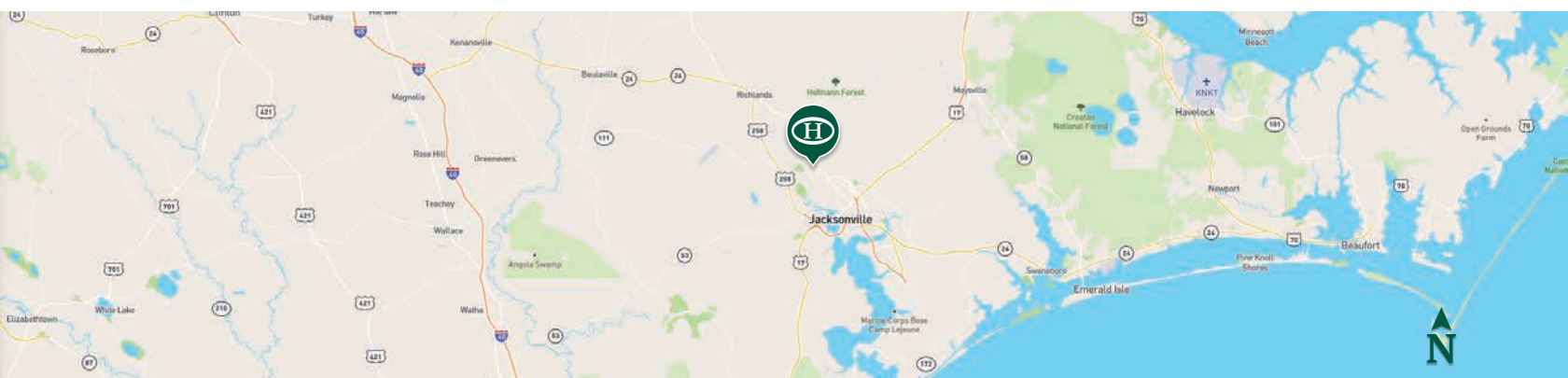







 Boundary

BOUNDARY LINES

MAP BOUNDARIES ARE ONLY APPROXIMATE AND MUST BE VERIFIED FOR ACCURACY.



Andrew Cobb

 Broker, Licensed in NC
 Andrew@HaydenOutdoors.com
 919.631.2813


**HAYDEN
 OUTDOORS.**
REAL ESTATE

