

Carroll 200 Tillable

200.10 Acres

Carroll County, IL

\$2,651,325



HAYDEN  OUTDOORS®

Carroll 200 Tillable

TOTAL ACRES:

200.10

PRICE:

\$2,651,325

COUNTY:

Carroll County

CLOSEST TOWN:

Chadwick, IL

Land Details:

Address: 0000 Adolph Rd,
Chadwick, Illinois 61014, USA

Closest Town: Chadwick

Total Acres: 200.10

Water Rights: Yes

Mineral Rights: Yes

Income Type: Tillable Lease

Estimated Taxes: \$7,630 - 2023

Source of lot size: Assessor/Tax Data

About This Property

This 200-acre farm in Carroll County, Illinois, features productive class B soils with a 118.6 PI and approximately 92% tillable acreage. Located near Chadwick, it offers convenient access in a strong agricultural area. The gently rolling terrain provides natural drainage, supporting consistent yields.

Land

The property consists of gently rolling cropland with approximately 92% tillable acreage. The class B soils, featuring a 118.6 PI, provide solid productivity for row crop farming. Natural drainage enhances the land's efficiency, while its open, expansive field offer ease of operation.

Agriculture

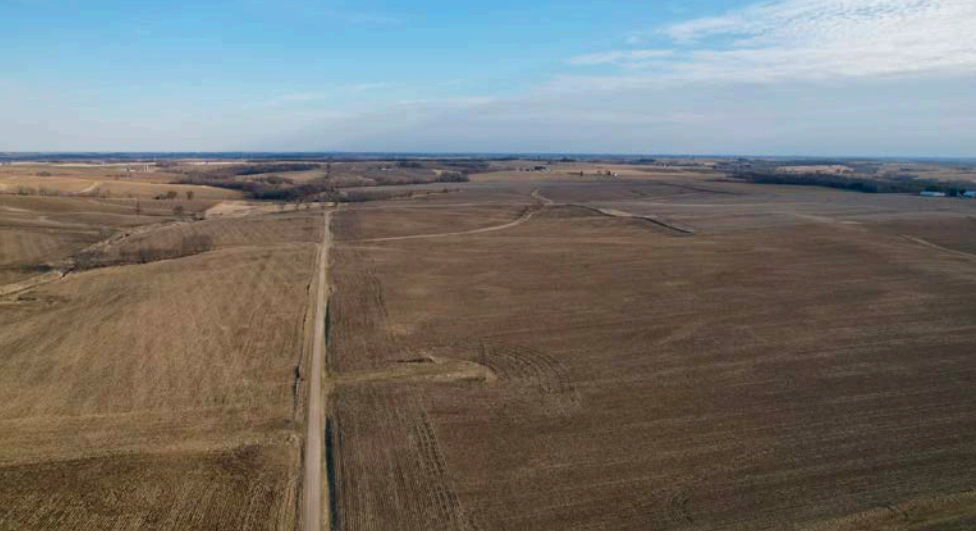
Soils consist of productive class B with a PI of 118.6. Gently rolling terrain with built in drainage makes this a very productive farm with consistent yields. Ground has been maintained and managed to provide excellent yields year over year.

Region & Climate

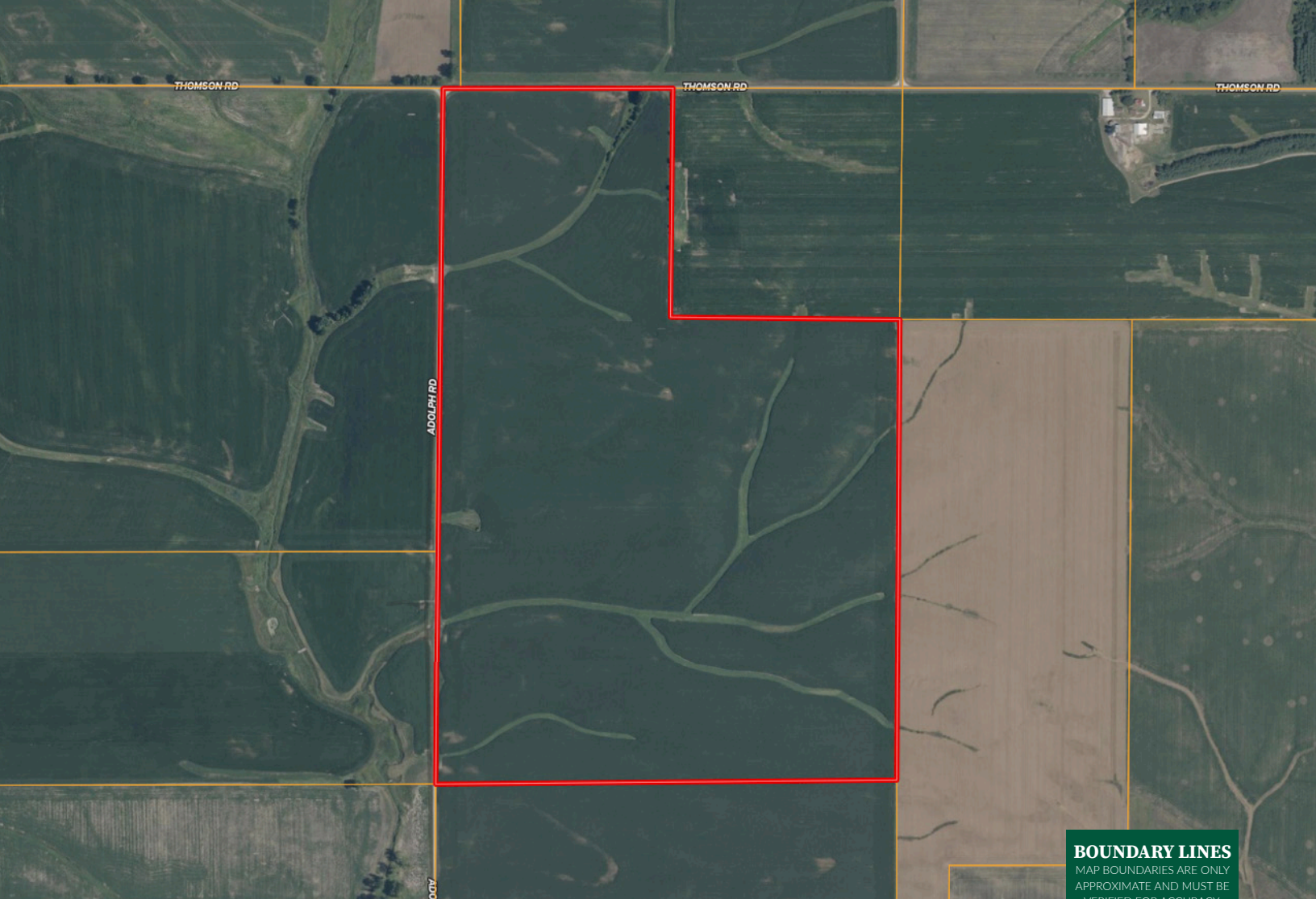
Chadwick, Illinois, located in Carroll County, lies in a gently rolling agricultural region typical of the Midwest, with fertile farmland, scattered woodlands, and small water bodies. The village experiences a humid continental climate, marked by warm, humid summers with temperatures reaching the mid-80s°F, and cold, snowy winters with temperatures often below freezing. Spring and fall bring moderate temperatures and varying precipitation.

*All information provided is deemed reliable but is not guaranteed and should be independently verified. Hayden Outdoors and its affiliates makes no representation or warranties as to the accuracy, reliability, or completeness of the information, text, property boundaries, graphics links or other items contained in any website, print, or otherwise linked to or from this website. The sale offering is made subject to errors, omissions, change of price, prior sale or withdrawal without notice.

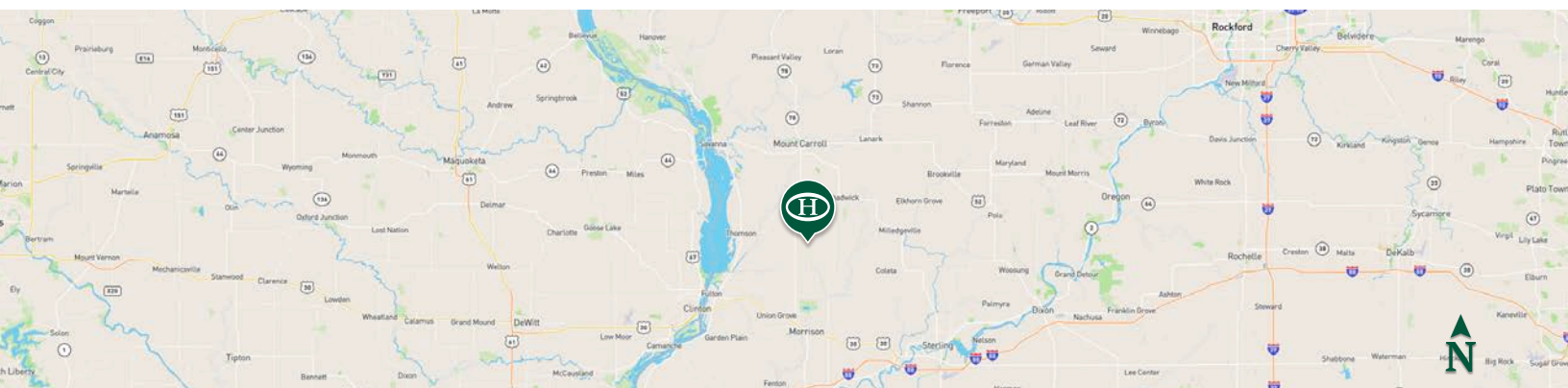




PROPERTY LINES ARE APPROXIMATE



 Boundary



Nick Mason

Designated Managing Broker,
Licensed in IL, WI, IN
✉ Nick@HaydenOutdoors.com
☎ 815.355.1155


**HAYDEN
OUTDOORS.**
REAL ESTATE

