

700 Frisco

0.23 Acres

Barry County, MO

\$220,000



HAYDEN  OUTDOORS.



700 Frisco

TOTAL ACRES:

0.70

PRICE:

\$220,000

COUNTY:

Barry County

CLOSEST TOWN:

Monett, MO

Land Details:

Address: 700 Frisco Avenue, ,
Monett, Missouri 65708, USA

Closest Town: Monett

Total Acres: 0.23

Estimated Taxes: \$511.65 - 2024

Source of lot size: Assessor/Tax Data

Building Details

Homes: 1

Finished Sq. Ft.: 2,200

Unfinished Sq. Ft.: 300

Bedrooms: 4

Full Bathrooms: 2

Half Bathrooms: 1

Basement: Unfinished

Outbuildings: 1

Fence Type: Chain Link

Cooling Systems:

- Forced Air Cooling

Heating Systems:

- Forced Air

Property Summary

This 4-bedroom, 2.5-bathroom home offers over 2,200 sq. ft. of living space on a spacious corner lot in Monett. The interior features hardwood floors, a functional kitchen with some new appliances, and remodeled bathrooms with updated finishes. Outside, the property includes an outdoor shed for extra storage and a chain-link fence, making it ideal for dogs. Located near schools, parks, and local amenities.

Recreation

Monett, MO offers several recreational options, including Monett City Park with trails, sports fields, and playgrounds; the Monett Aquatic Center with water slides and a lazy river; the Monett Golf Course for a relaxing round of golf; and Ozark Prairie Park for nature walks and wildlife viewing.

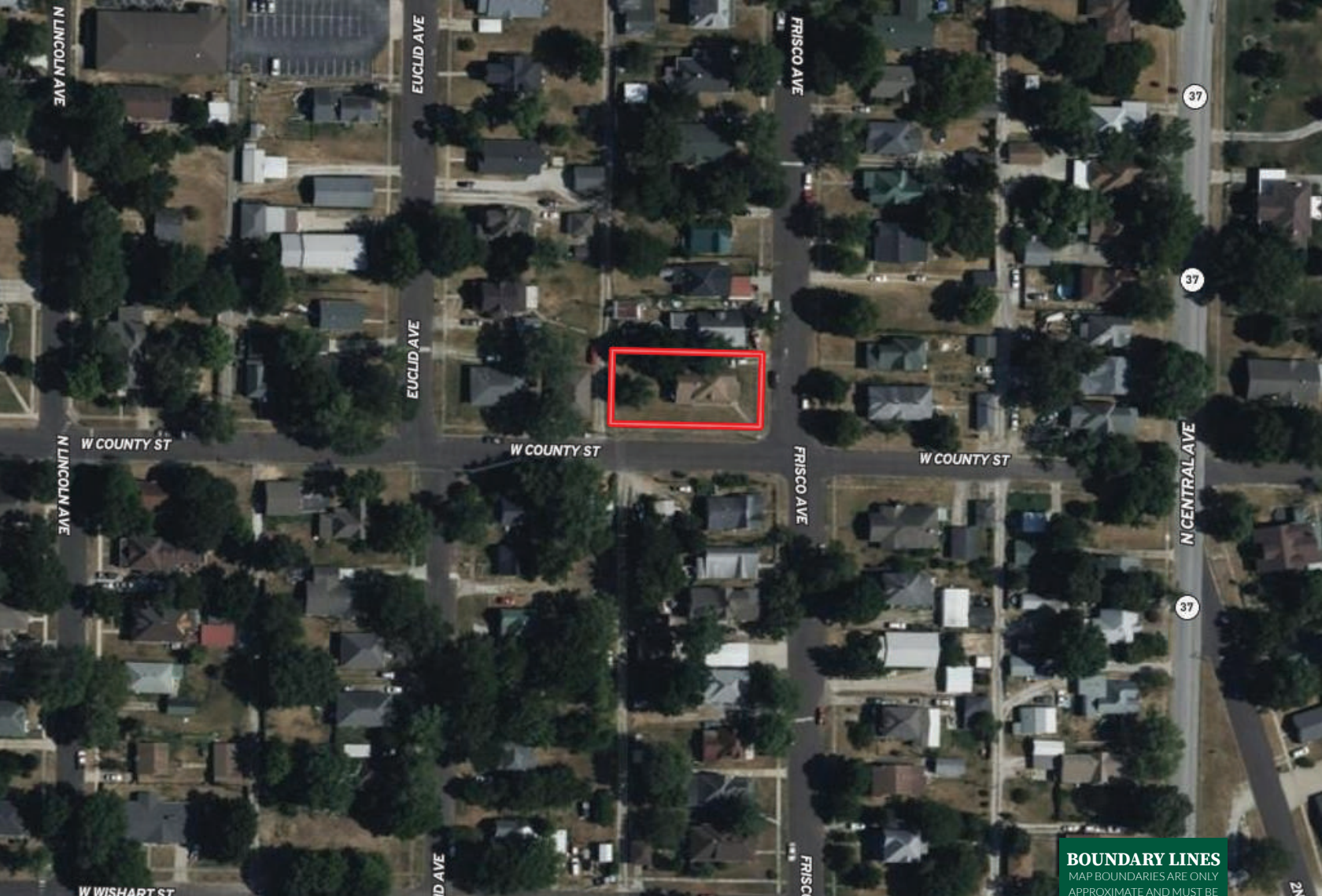
Region & Climate

Monett, MO, experiences a humid subtropical climate with hot, humid summers and mild to cool winters. Summer highs average in the upper 80s to low 90s Fahrenheit, while winter lows can drop to the 20s. The area receives moderate rainfall year-round, occasional snowfall in winter, and the potential for thunderstorms in spring and summer.

*All information provided is deemed reliable but is not guaranteed and should be independently verified. Hayden Outdoors and its affiliates makes no representation or warranties as to the accuracy, reliability, or completeness of the information, text, property boundaries, graphics links or other items contained in any website, print, or otherwise linked to or from this website. The sale offering is made subject to errors, omissions, change of price, prior sale or withdrawal without notice.



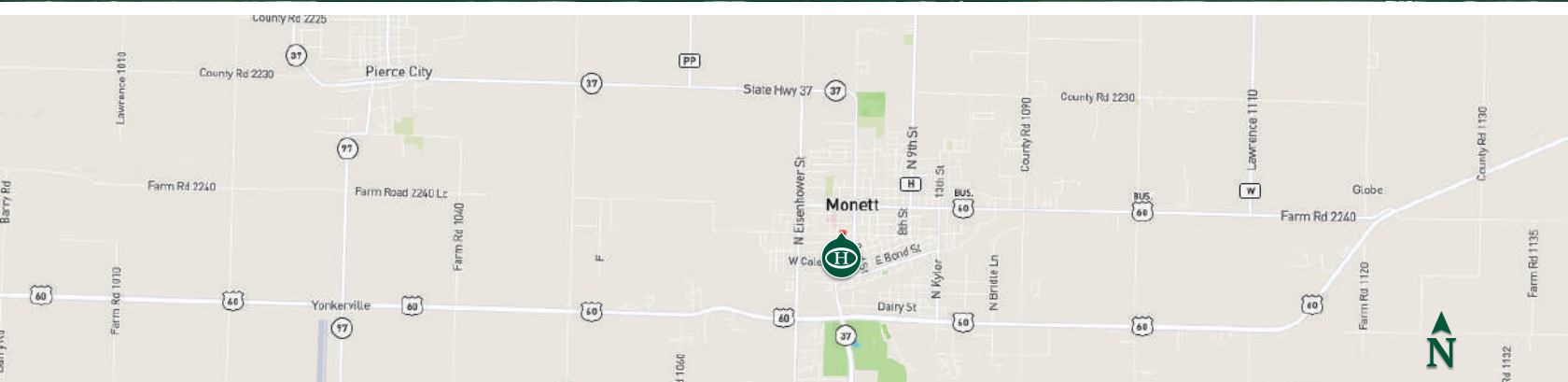




 Boundary

BOUNDARY LINES

MAP BOUNDARIES ARE ONLY APPROXIMATE AND MUST BE VERIFIED FOR ACCURACY.



Nathan Anderson

- 📍 Salesperson, Licenced in MO, AR, & OK
- ✉ NathanAnderson@HaydenOutdoors.com
- 📞 417.312.5570


**HAYDEN
 OUTDOORS.**
REAL ESTATE

