

Horizon's Edge

34.63 Acres | Albany County, WY | \$145,000



HAYDEN  OUTDOORS.

Horizon's Edge

TOTAL ACRES:

34.63

PRICE:

\$145,000

COUNTY:

Albany County

CLOSEST TOWN:

Laramie, WY

Activities & Amenities:

ATV/Off Road
Cattle/Ranch
Cycling/Mountain Biking
Development Potential
Hunting - Big Game
Hunting - Predator/Varmint
Hunting - Small Game
Natural Spring
Skiing/Snowmobiling/Snow Sports

Land Details:

Address: 898 HWY 130, Laramie, Wyoming 82070, USA
Closest Town: Laramie
Total Acres: 34.63
Deeded Acres: 0.00
Leased Acres: 0.00
Zoning: Rural Residential
Elevation: 7,500
Topography: Rolling
Vegetation: Native Grasses
Estimated Taxes: \$415 - 2024
Source of lot size: Assessor/Tax Data

About This Property

Discover Horizon's Edge, a piece of open, vacant, and buildable land located at 898 Highway 130, Laramie, Wyoming. This 35-acre property offers a private gated entry allowing for easy access from HWY 130 and making it an ideal location for those who value both convenience and seclusion. Only 15 minutes from Laramie, WY.

Land

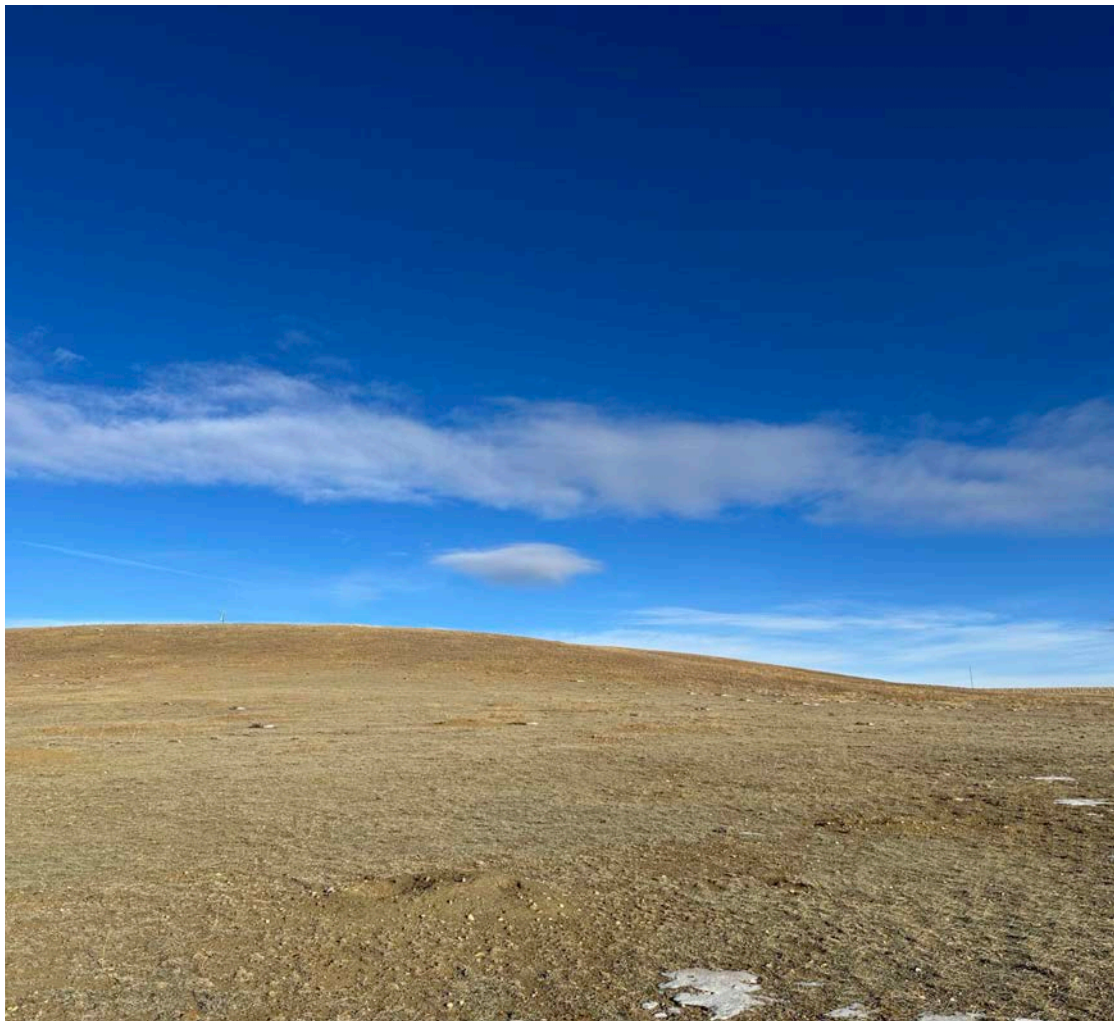
The property boasts vast, stunning, and unobstructed views of the Wyoming landscape and soaring mountains, providing a blank canvas for your vision. Here, your dreams are free to take shape without the constraints of covenants, allowing for complete customization of your future home or investment.

Location

Laramie is known for its high elevation of 7,200 feet, offering a unique climate for outdoor enthusiasts with over 300 days of sunshine annually. Albany County itself is a mix of vibrant community life and natural beauty, home to the University of Wyoming, and a hub for cultural, educational, and recreational activities. The area combines the charm of a college town with the rugged beauty of Wyoming's landscapes, making "Horizon's Edge" not just a plot of land, but a gateway to a lifestyle surrounded by nature's grandeur.

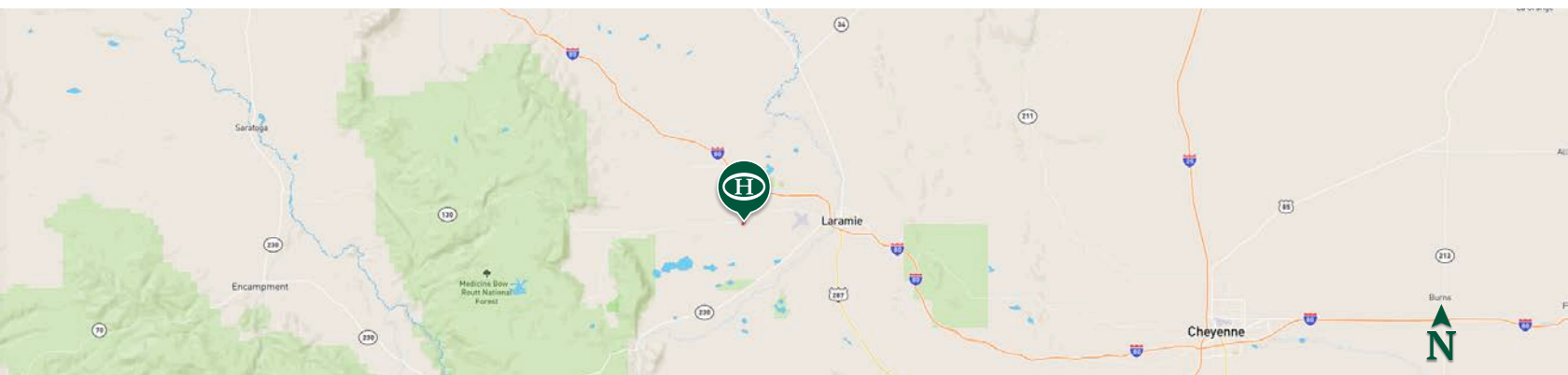
*All information provided is deemed reliable but is not guaranteed and should be independently verified. Hayden Outdoors and its affiliates makes no representation or warranties as to the accuracy, reliability, or completeness of the information, text, property boundaries, graphics links or other items contained in any website, print, or otherwise linked to or from this website. The sale offering is made subject to errors, omissions, change of price, prior sale or withdrawal without notice.







 Boundary



HAYDEN OUTDOORS

FARM, RANCH & RECREATIONAL REAL ESTATE



James Mansfield

📍 Broker Associate, Licensed in WY & CO
✉ JamesMansfield@HaydenOutdoors.com
📞 307.761.4533

Jaci Cole

📍 Realtor, Licensed in WY
✉ Jaci@HaydenOutdoors.com
📞 303.880.3779

