

Jacket Road Farmhouse

3.51 Acres | McDonald County, MO | \$319,000



HAYDEN  OUTDOORS.

Activities & Amenities

House/Cabin

Land Details

Address: 255 Jacket Road,
Seligman, Missouri 65745

Closest Town: Pea Ridge

Total Acres: 3.51

Deeded Acres: 3.51

Zoning: Residential (NEC)

Elevation: 1150

Source of lot size: Survey

Building Details

Homes: 1

Style of Home(s): Ranch with Loft Area

Finished Sq. Ft.: 1682

Bedrooms: 2

Full Bathrooms: 2

Basement: Unfinished

Parking Types:

Driveway

Outbuildings: 3

Types of Outbuildings:

12x20 Pole Barn

12x16 Tool Shed

8x10 Well House

Fence Type: Barbed Wire

Cooling Systems:

Forced Air Cooling

Heating Systems:

Forced Air

Foundations:

Concrete



Property Summary

Discover farmhouse living in this beautifully remodeled 2-bedroom, 2-bath home with a loft area just 5 miles from Pea Ridge, Arkansas. It is situated in McDonald County, Missouri, on 3.51 acres with views of rolling hills, trees, and pastures. This prime location of country living within 20 minutes of Northwest Arkansas is rare to find.





Improvements

The 1,682-square-foot home was initially built in 1975 and entirely remodeled in 2020. The eat-in kitchen renovations include stainless appliances, granite countertops, and re-finished original hardwood floors. The Kitchen provides access to the living room and the stairs to the large loft area. The main level also has a primary suite with French doors opening to a private deck and a large bathroom with a double sink vanity. The main level also has an additional bedroom and another large bathroom with a granite vanity countertop and tiled shower walls. The laundry room doubles as a mud room as well from the back entrance.

An 8x8 cellar is accessible from outside the home. On the 3.51 surveyed acres, there is a 12x20 Pole Barn, a 12x16 tool shed, and an 8x10 Well House. The house is also hooked up to rural water service and has access to GoBec Fiber optic Internet Service. The home has an automatic Generac generator to maintain normal household function during a power outage.

Please contact listing agents for more information on this property or to schedule a private showing. **Financial verification or pre-approval is required before appointments can be scheduled**







Location

Southwest Missouri and the Jacket Road Farmhouse are located in an area that offers various outdoor activities and amenities.

- 20-minute drive to Bentonville, Rogers, and Northwest Arkansas
- Beaver Lake is within 30-minute drive
- Close to over 150+ miles of Mounting Biking trails.
- Within 30 miles of incredible amenities, including Crystal Bridges Museum of American Art, The Scott Family Amazeum, J.B. and Johnelle Hunt Family Ozark Highlands Nature Center, and many other first-class attractions.
- Additional nearby cities include Branson, Springfield, and Joplin, Missouri.

*All information provided is deemed reliable but is not guaranteed and should be independently verified. Hayden Outdoors and its affiliates makes no representation or warranties as to the accuracy, reliability, or completeness of the information, text, property boundaries, graphics links or other items contained in any website, print, or otherwise linked to or from this website. The sale offering is made subject to errors, omissions, change of price, prior sale or withdrawal without notice.





Hayden Outdoors

Buyer Process

BUYER QUALIFICATION: Each potential purchaser will be evaluated with respect to very specific submission requirements. Confidentiality will be held in the highest regard. Sellers will be made aware of each potential purchaser's ability to perform, should that become their goal.

PROPERTY SHOWINGS: With regards to scheduling showings on your property, Hayden Outdoors understands and respects your livelihood and personal items. The property will be presented to potential purchasers by a Hayden Outdoors representative by appointment only, unless arranged otherwise.

REPRESENTATION OF OFFERS: Hayden Outdoors will advise and support sellers in the presentation and representation of offers. Hayden Outdoors will supply active and current marketing materials when dealing with each potential offer. Offers must be presented in a timely manner, and Hayden Outdoors brokers will travel to present the offers, and in special cases, Hayden Outdoors may execute a webinar for presentation.

BROKER PARTICIPATION: Hayden Outdoors welcomes outside brokers to bring buyers to purchase our properties. We offer cooperating commission rates to participating brokers. All properties marketed with Hayden Outdoors are exclusively promoted and listed through the real estate process.

EQUAL HOUSING: Hayden Outdoors is proud to be an Equal Housing Opportunity Brokerage. All real estate advertised is subject to the Federal Housing Act, which makes it illegal to advertise "any preference, limitation, or discrimination because of race, color, religion, sex, handicap, familial status, or national origin, or intention to make any such preference, limitation, or discrimination."

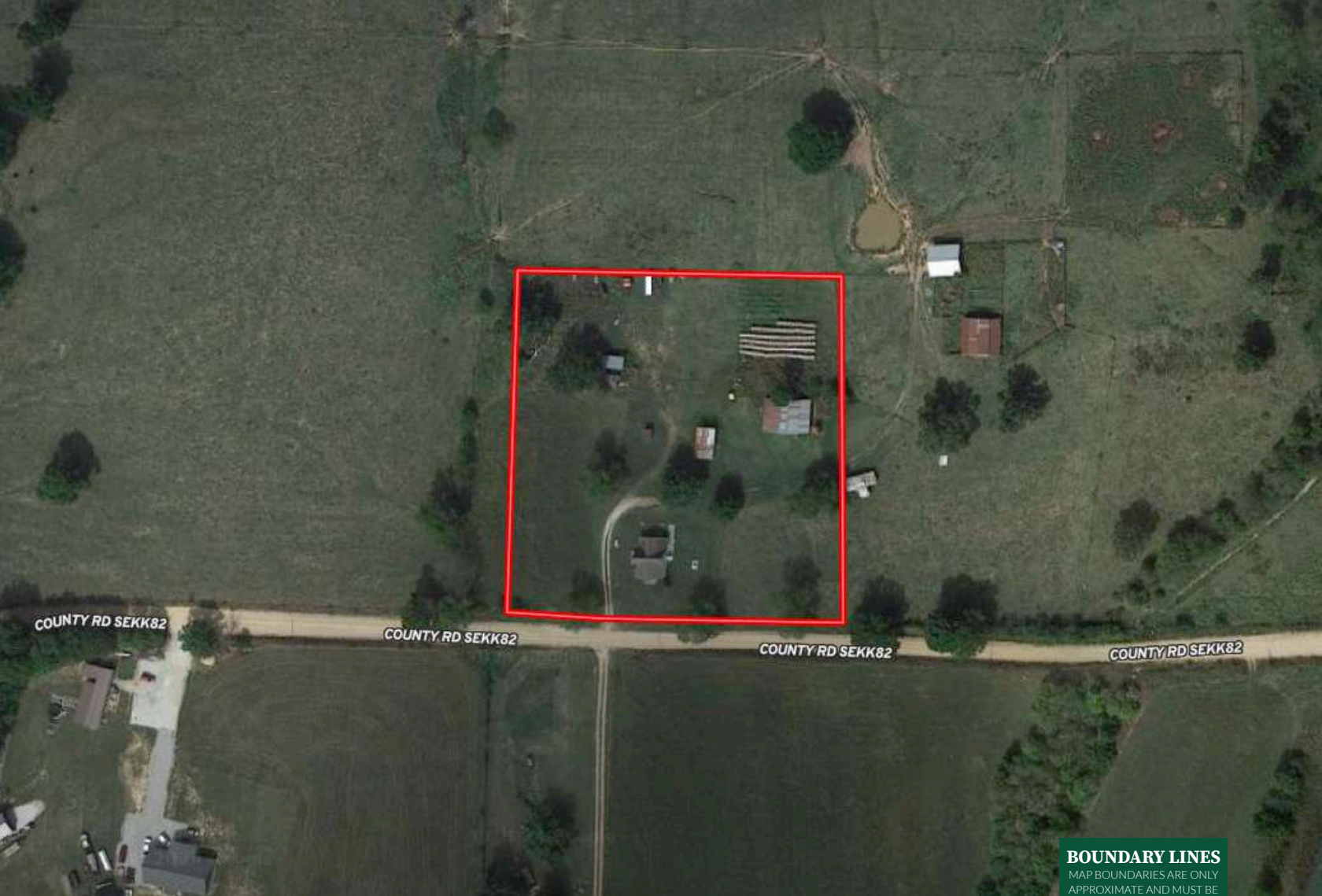


"The service you get transcends anything I've ever heard of. They literally turn your vision into reality. I mean, who else does that for you. Nobody"

- RICK STEINER, SELLER/BUYER

Scan to see more
testimonials





 Boundary

BOUNDARY LINES

MAP BOUNDARIES ARE ONLY
APPROXIMATE AND MUST BE
VERIFIED FOR ACCURACY.



Allen Treadwell

📍 Licensed in AR, KS, MO & OK

✉ Allen@HaydenOutdoors.com

📞 479.903.4109


**HAYDEN
OUTDOORS.**
REAL ESTATE

