

Zimmerschied Two Bit Ranch

780.35 Acres

Crook County, WY

\$2,100,000



HAYDEN  OUTDOORS®

Zimmerschied Two Bit Ranch

TOTAL ACRES:

780.35

PRICE:

\$2,100,000

COUNTY:

Crook County, WY

CLOSEST TOWN:

Rozet, WY

Activities & Amenities:

ATV/Off Road
Cattle/Ranch
House/Cabin
Hunting - Big Game
Hunting - Predator/Varmint
Hunting - Small Game
Outbuilding/Barn/Shed/Shop
State Hunting Unit: 21

Land Details:

Address: 777 Shipwheel Rd,
Moorcroft, Wyoming 82721, USA
Closest Town: Rozet
Total Acres: 780.35
Deeded Acres: 780.35
Leased Acres: 0.00
Zoning: Ag
Elevation: 4500
Estimated Taxes: \$3,622.66 - 2023
Source of lot size: Assessor/Tax Data

Building Details

Homes: 2
Homes:
Modular
Stick Built
Style of Home(s): Ranch & 2 story
Finished Sq. Ft.: 5312
Bedrooms: 8
Full Bathrooms: 4
Three-Quarter Bathrooms: 1
Basement: Full finished
Parking Types:
Detached Garage
Outbuildings: 2
Fence Type: Barb Wire
Cooling Systems:
Forced Air Cooling

Property Summary

Discover Wyoming ranch living nestled on 780+/- acres of pristine land located between Rozet and Moorcroft. This expansive property sits atop the landscape offering panoramic views. Two, well appointed homes offer a multi family setup. Good grazing and excellent hunting opportunities await.

Land

Discover Wyoming ranch living at the Zimmerschied Two Bit Ranch, nestled on 780 +/- acres of pristine land between Rozet and Moorcroft. Situated on Campbell – Crook County border, this unique property offers excellent native grasses suitable for cattle or horses and other livestock.

This expansive property sits atop the landscape, offering unparalleled views of the winding Belle Fourche River and showcasing rugged draws, rock outcroppings, and historic tipi rings that accentuate the natural beauty of the region.

The land is high plains rangeland with a few craggy draws that attract large game like mule deer, antelope, sage grouse and the occasional predatory game like mountain lion and bobcats. There is a small hay field that has been cultivated in the past and could easily be worked again to supplement your feeding program.

The entire property is meticulously cared for, reflecting pride of ownership and attention to detail. Experience breathtaking panoramic views that stretch for miles from this exceptional ranch, where every aspect embodies the essence of Wyoming's rugged beauty.





Improvements

Main Home was built in 1979. Main level living with a finished basement. Approx 3272 sq feet. This home has been very well maintained and has had a recent roof replacement and brand new deck at the front door. Five bedroom (2 non conforming) and three baths. Two large living areas, ample storage in basement. Walk out basement opens up to a covered patio and an expansive yard with multiple garden areas. The views from this home are incredible.

The nearby 40×72 shop has a concrete floor and is insulated with multiple heating sources. It also has a bathroom for quick clean up. 1200 sq foot barn with loft is well thought out and designed for ease of use when working livestock or unloading hay. Attached 21×41 open pole barn is perfect for sheltering livestock. Corrals have a nice load out area with plenty of room for trucks and trailers to maneuver.

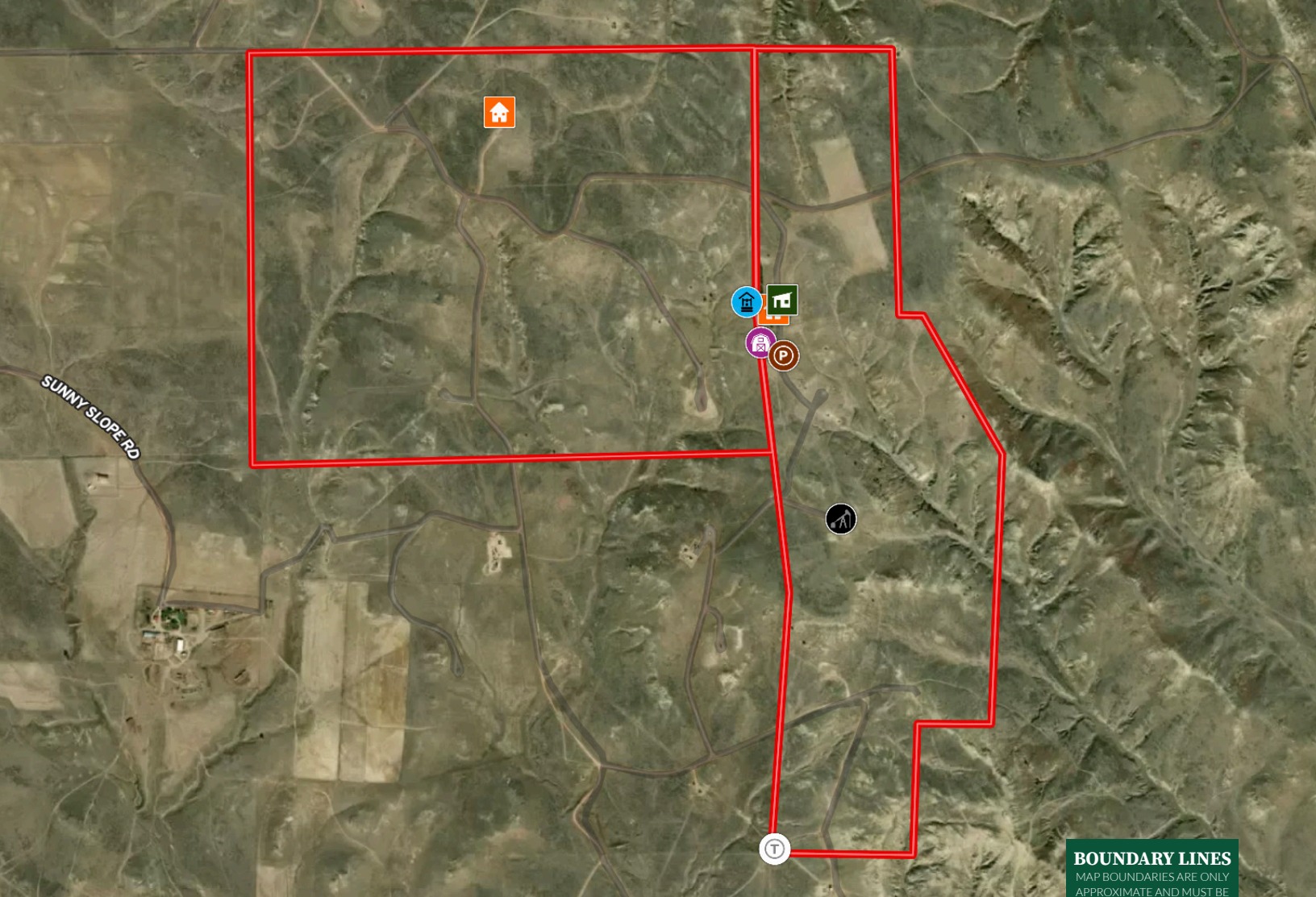
The second home is a lovely 2040 sq foot modular built in 2013. A huge kitchen with ample storage and counter space. Primary bedroom with a large en suite bath and generous walk in closet. The secondary residence has been recently updated and features a generous open-concept layout with abundant natural light, offering 3 bedrooms and 2 bathrooms. It provides modern comfort and style, ideal for guests, extended family, or ranch help.

Recreation

Located in state hunting area 21.

*All information provided is deemed reliable but is not guaranteed and should be independently verified. Hayden Outdoors and its affiliates makes no representation or warranties as to the accuracy, reliability, or completeness of the information, text, property boundaries, graphics links or other items contained in any website, print, or otherwise linked to or from this website. The sale offering is made subject to errors, omissions, change of price, prior sale or withdrawal without notice.





HAYDEN OUTDOORS.

FARM, RANCH & RECREATIONAL REAL ESTATE



Jenny Tarver

📍 Salesperson, Licensed in WY
 ✉️ Jenny@HaydenOutdoors.com
 📞 307.299.7145

Taylor Vinot

📍 Salesperson, Licensed in WY
 ✉️ TVinot@HaydenOutdoors.com
 📞 307.696.1309

