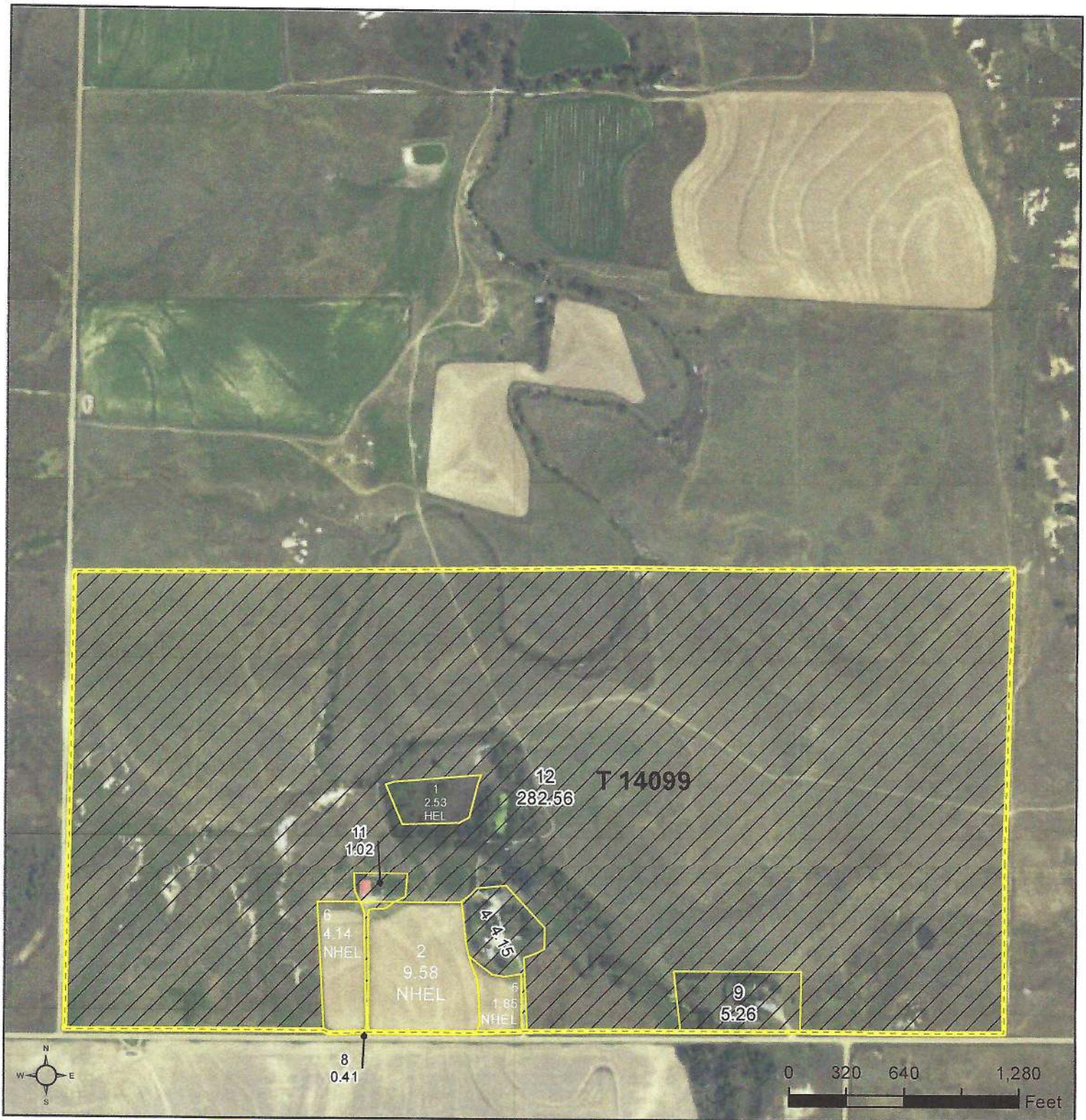




United States
Department of
Agriculture

Trego County, Kansas



Common Land Unit

- Non-Cropland
- Cropland

Wetland Determination Identifiers

- Restricted Use
- Limited Restrictions
- Exempt from Conservation Compliance Provisions

- Tract Boundary
- PLSS

All fields NAG, NI unless otherwise noted.

- | | |
|-----------------------------|---------------------------------|
| 1/ All Wheat HRW, NI, GR | 6/ Grass NAG, NI, LS |
| 2/ All Sorghum GRS, NI, GR | 7/ Summer Fallow, NI |
| 3/ All Corn YEL, NI GR | 8/ Sorghum Forage, Cane, NI, FG |
| 4/ All Soybeans COM, NI, GR | 9/ Sorghum Dual Purpose, NI, FG |
| 5/ Grass NAG, NI, GZ | 10/ Alfalfa, NI, FG |

2024 Program Year

Map Created March 27, 2024

Farm 5005

Tract 14099

36-15-24

Tract Cropland Total: 18.10 acres

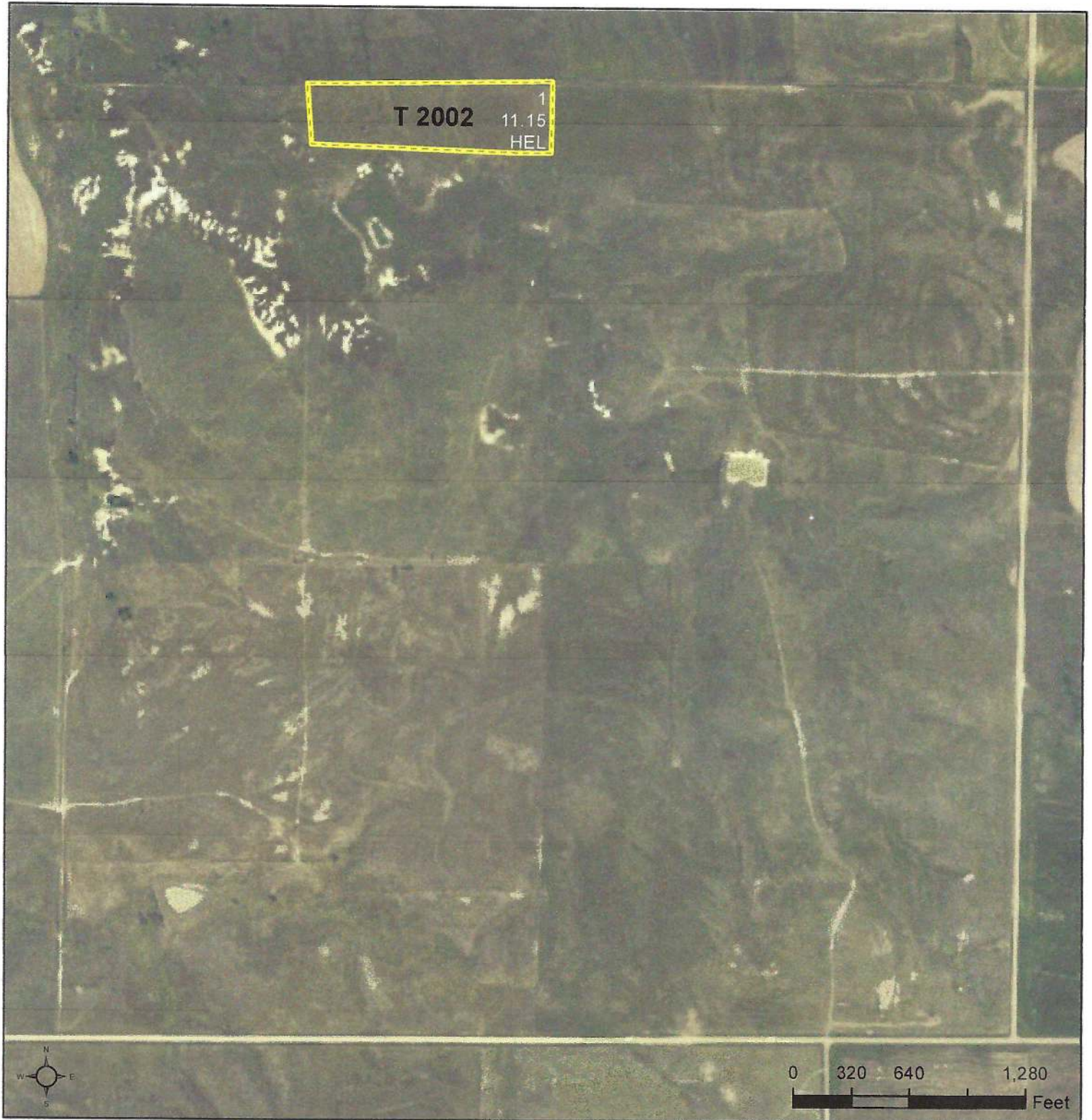
Displayed over 2021 NAIP

United States Department of Agriculture (USDA) Farm Service Agency (FSA) maps are for FSA Program administration only. This map does not represent a legal survey or reflect actual ownership; rather it depicts the information provided directly from the producer and/or National Agricultural Imagery Program (NAIP) imagery. The producer accepts the data 'as is' and assumes all risks associated with its use. USDA-FSA assumes no responsibility for actual or consequential damage incurred as a result of any user's reliance on this data outside FSA Programs. Wetland identifiers do not represent the size, shape, or specific determination of the area. Refer to your original determination (CPA-026 and attached maps) for exact boundaries and determinations or contact USDA Natural Resources Conservation Service (NRCS).



United States
Department of
Agriculture

Trego County, Kansas



Common Land Unit

PLSS

All fields NAG, NI unless otherwise noted.

- Cropland
- Tract Boundary

Wetland Determination Identifiers

- Restricted Use
- Limited Restrictions
- Exempt from Conservation Compliance Provisions

- | | |
|-----------------------------|---------------------------------|
| 1/ All Wheat HRW, NI, GR | 6/ Grass NAG, NI, LS |
| 2/ All Sorghum GRS, NI, GR | 7/ Summer Fallow, NI |
| 3/ All Corn YEL, NI GR | 8/ Sorghum Forage, Cane, NI, FG |
| 4/ All Soybeans COM, NI, GR | 9/ Sorghum Dual Purpose, NI, FG |
| 5/ Grass NAG, NI, GZ | 10/ Alfalfa, NI, FG |

2024 Program Year

Map Created March 27, 2024

Farm 5005

Tract 2002

31-15-23

Tract Cropland Total: 11.15 acres

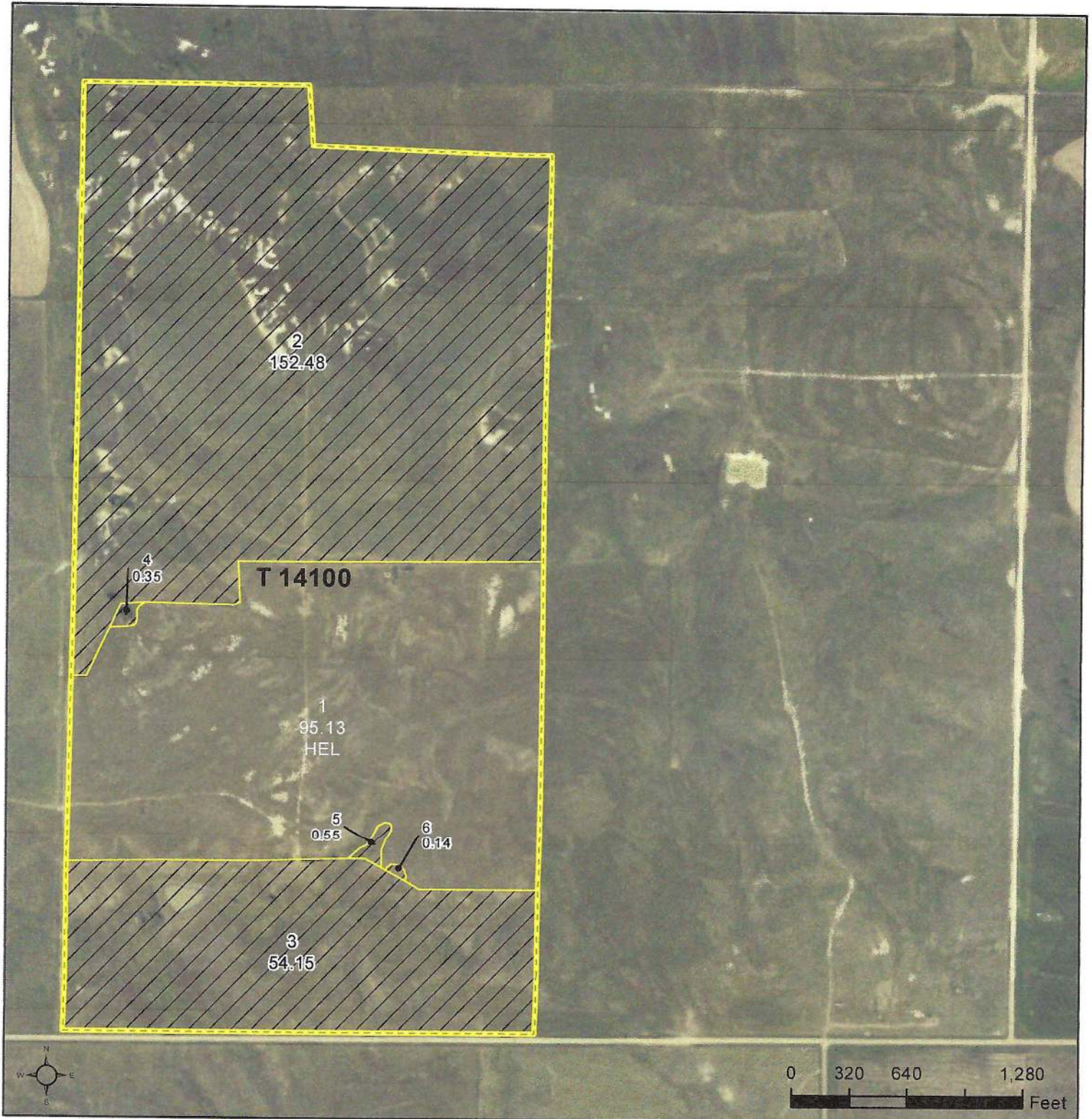
Displayed over 2021 NAIP

United States Department of Agriculture (USDA) Farm Service Agency (FSA) maps are for FSA Program administration only. This map does not represent a legal survey or reflect actual ownership; rather it depicts the information provided directly from the producer and/or National Agricultural Imagery Program (NAIP) imagery. The producer accepts the data 'as is' and assumes all risks associated with its use. USDA-FSA assumes no responsibility for actual or consequential damage incurred as a result of any user's reliance on this data outside FSA Programs. Wetland identifiers do not represent the size, shape, or specific determination of the area. Refer to your original determination (CPA-026 and attached maps) for exact boundaries and determinations or contact USDA Natural Resources Conservation Service (NRCS).



United States
Department of
Agriculture

Trego County, Kansas



Common Land Unit

- Non-Cropland
- Cropland

Wetland Determination Identifiers

- Restricted Use
- Limited Restrictions
- Exempt from Conservation Compliance Provisions

Tract Boundary
PLSS

All fields NAG, NI unless otherwise noted.

- | | |
|-----------------------------|---------------------------------|
| 1/ All Wheat HRW, NI, GR | 6/ Grass NAG, NI, LS |
| 2/ All Sorghum GRS, NI, GR | 7/ Summer Fallow, NI |
| 3/ All Corn YEL, NI GR | 8/ Sorghum Forage, Cane, NI, FG |
| 4/ All Soybeans COM, NI, GR | 9/ Sorghum Dual Purpose, NI, FG |
| 5/ Grass NAG, NI, GZ | 10/ Alfalfa, NI, FG |

2024 Program Year

Map Created March 27, 2024

Farm 5005

Tract 14100

31-15-23

Displayed over 2021 NAIP

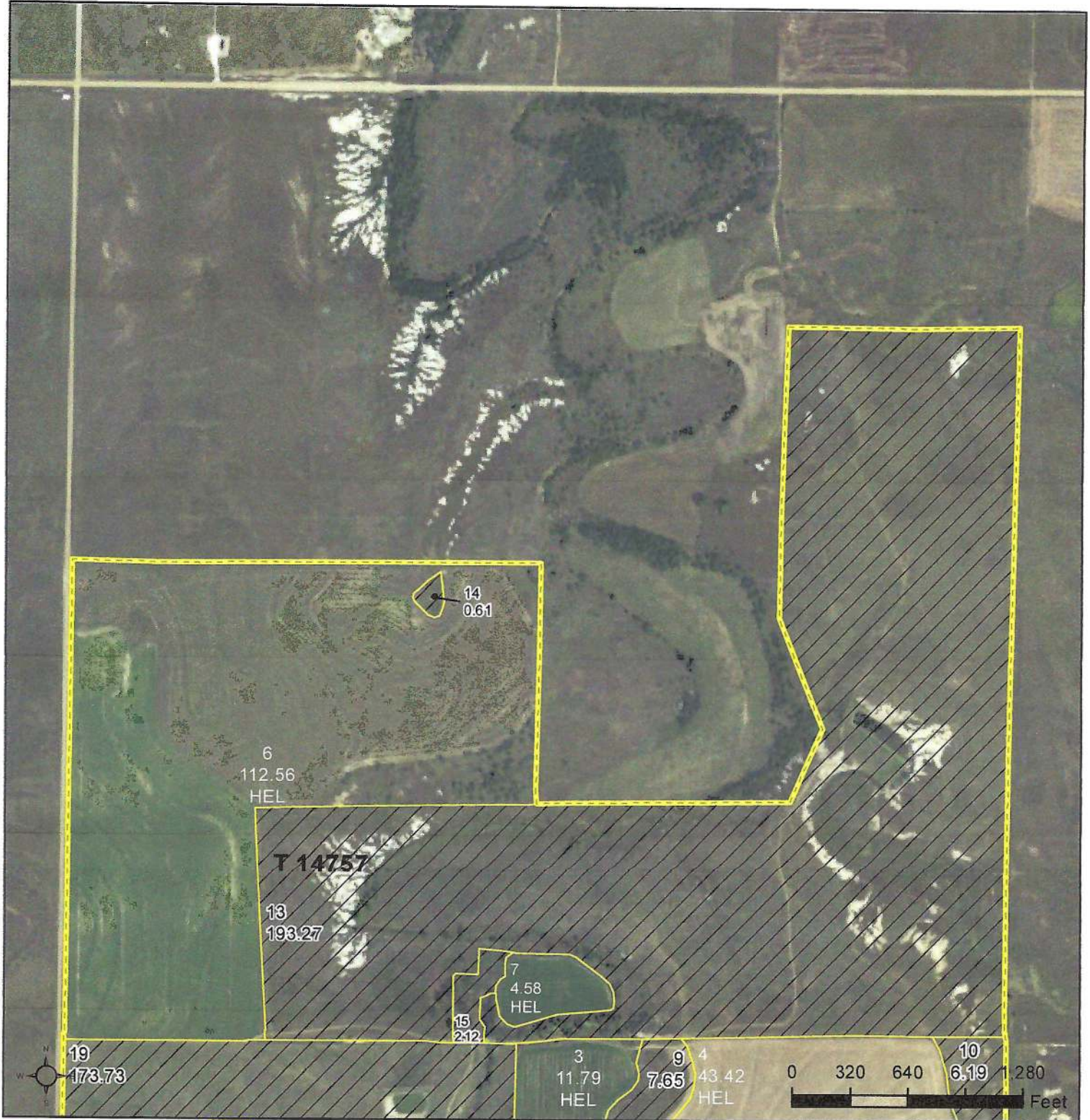
Tract Cropland Total: 95.13 acres

United States Department of Agriculture (USDA) Farm Service Agency (FSA) maps are for FSA Program administration only. This map does not represent a legal survey or reflect actual ownership; rather it depicts the information provided directly from the producer and/or National Agricultural Imagery Program (NAIP) imagery. The producer accepts the data 'as is' and assumes all risks associated with its use. USDA-FSA assumes no responsibility for actual or consequential damage incurred as a result of any user's reliance on this data outside FSA Programs. Wetland identifiers do not represent the size, shape, or specific determination of the area. Refer to your original determination (CPA-026 and attached maps) for exact boundaries and determinations or contact USDA Natural Resources Conservation Service (NRCS).



United States
Department of
Agriculture

Trego County, Kansas



Common Land Unit

- Non-Cropland
- Cropland

Wetland Determination Identifiers

- Restricted Use
- Limited Restrictions
- Exempt from Conservation Compliance Provisions

Tract Boundary
PLSS

All fields NAG, NI unless otherwise noted.

- | | |
|-----------------------------|---------------------------------|
| 1/ All Wheat HRW, NI, GR | 6/ Grass NAG, NI, LS |
| 2/ All Sorghum GRS, NI, GR | 7/ Summer Fallow, NI |
| 3/ All Corn YEL, NI GR | 8/ Sorghum Forage, Cane, NI, FG |
| 4/ All Soybeans COM, NI, GR | 9/ Sorghum Dual Purpose, NI, FG |
| 5/ Grass NAG, NI, GZ | 10/ Alfalfa, NI, FG |

2024 Program Year

Map Created March 27, 2024

Farm 5005

Tract 14757

25-15-24

Tract Cropland Total: 217.92 acres

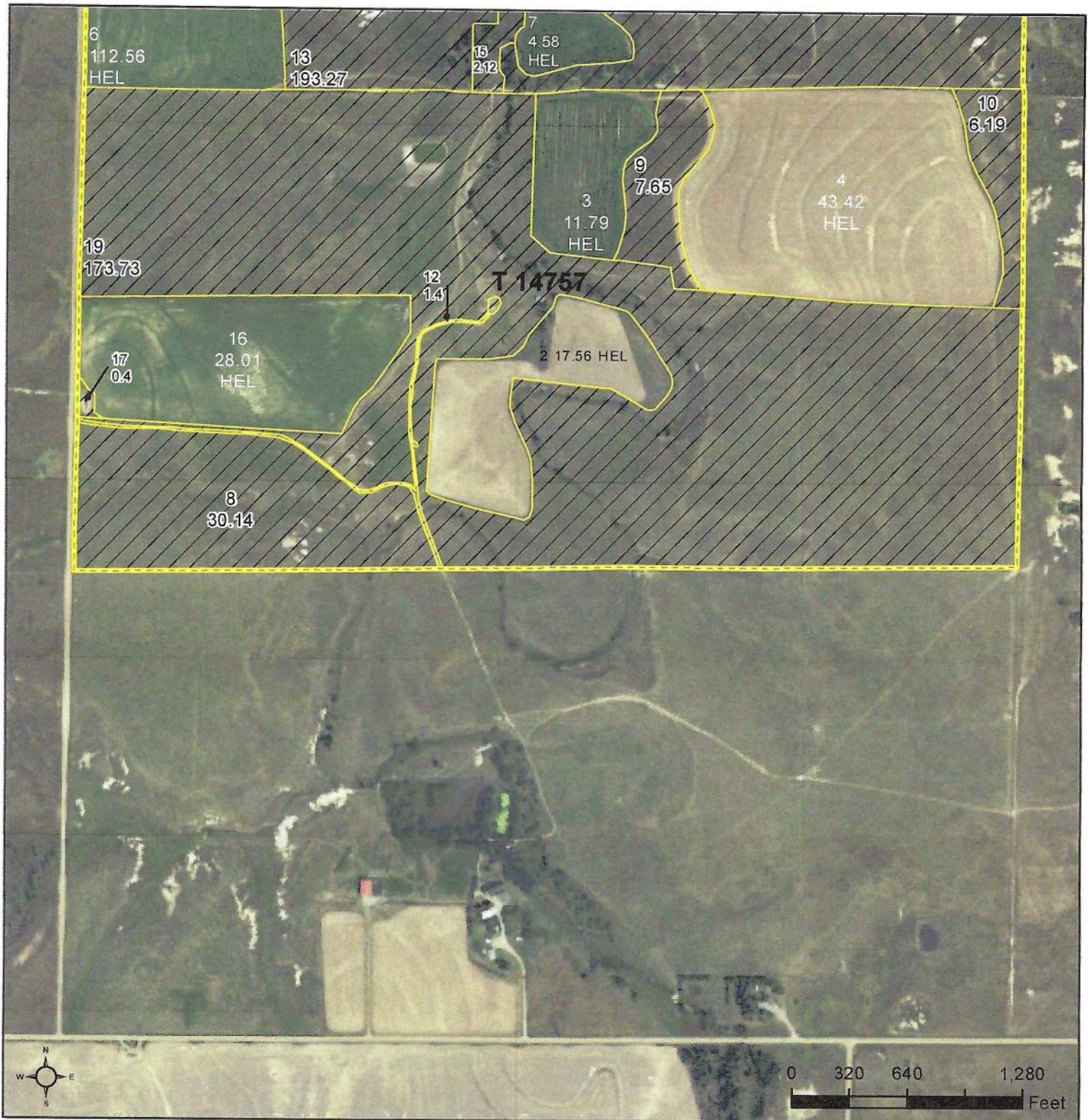
Displayed over 2021 NAIP

United States Department of Agriculture (USDA) Farm Service Agency (FSA) maps are for FSA Program administration only. This map does not represent a legal survey or reflect actual ownership; rather it depicts the information provided directly from the producer and/or National Agricultural Imagery Program (NAIP) imagery. The producer accepts the data 'as is' and assumes all risks associated with its use. USDA-FSA assumes no responsibility for actual or consequential damage incurred as a result of any user's reliance on this data outside FSA Programs. Wetland identifiers do not represent the size, shape, or specific determination of the area. Refer to your original determination (CPA-026 and attached maps) for exact boundaries and determinations or contact USDA Natural Resources Conservation Service (NRCS).



United States
Department of
Agriculture

Trego County, Kansas



Common Land Unit

- Non-Cropland
- Cropland

Wetland Determination Identifiers

- Restricted Use
- Limited Restrictions
- Exempt from Conservation Compliance Provisions

Tract Boundary
PLSS

All fields NAG, NI unless otherwise noted.

- | | |
|-----------------------------|---------------------------------|
| 1/ All Wheat HRW, NI, GR | 6/ Grass NAG, NI, LS |
| 2/ All Sorghum GRS, NI, GR | 7/ Summer Fallow, NI |
| 3/ All Corn YEL, NI GR | 8/ Sorghum Forage, Cane, NI, FG |
| 4/ All Soybeans COM, NI, GR | 9/ Sorghum Dual Purpose, NI, FG |
| 5/ Grass NAG, NI, GZ | 10/ Alfalfa, NI, FG |

2024 Program Year

Map Created March 27, 2024

Farm 5005

Tract 14757

36-15-24

Displayed over 2021 NAIP

Tract Cropland Total: 217.92 acres

United States Department of Agriculture (USDA) Farm Service Agency (FSA) maps are for FSA Program administration only. This map does not represent a legal survey or reflect actual ownership; rather it depicts the information provided directly from the producer and/or National Agricultural Imagery Program (NAIP) imagery. The producer accepts the data 'as is' and assumes all risks associated with its use. USDA-FSA assumes no responsibility for actual or consequential damage incurred as a result of any user's reliance on this data outside FSA Programs. Wetland identifiers do not represent the size, shape, or specific determination of the area. Refer to your original determination (CPA-026 and attached maps) for exact boundaries and determinations or contact USDA Natural Resources Conservation Service (NRCS).