

Lookout Creek Meadows

433.00 Acres | Dade County, GA | \$1,300,000



HAYDEN  OUTDOORS.

Activities & Amenities

ATV/Off Road

Development Potential

Equestrian/Horse Property

Farm/Crops/Ag

Fishing

Hunting - Big Game

Hunting - Predator/Varmint

Hunting - Small Game

Recreational Business

Stream/River

Timber

Water Access

Water View

Waterfront

Land Details

Address: TBD Ga Hwy 136 ,
Trenton , Georgia 30752, USA

Closest Town: Trenton

Total Acres: 433.00

Deeded Acres: 433.00

Leased Acres: 0.00

Estimated Taxes: \$0

Source of lot size: Unknown



Property Summary

Welcome to your own slice of paradise in Trenton, GA. This property spans 433 +/- acres just outside of town and has lush meadows, timber, and much more. With over 2 miles of frontage along the Lookout Creek , you'll enjoy endless opportunities for recreation such as fishing, hunting, and rafting.





Land

The terrain of this property is mostly flat with a few rolling hills. On the south side of the property, the terrain starts to increase in elevation but is very accessible via trail system that an ATV or side by side would be great for.

Improvements

Based on the location of this property, the cover, water, open meadows, and terrain it has, this provides great habitat for Whitetail Deer and Turkeys.

Lookout Creek provides great fishing opportunity to anglers with all levels of experience!

Region & Climate

Average rainfall in Trenton Georgia is 56 inches.

**All information provided is deemed reliable but is not guaranteed and should be independently verified. Hayden Outdoors and its affiliates makes no representation or warranties as to the accuracy, reliability, or completeness of the information, text, property boundaries, graphics links or other items contained in any website, print, or otherwise linked to or from this website. The sale offering is made subject to errors, omissions, change of price, prior sale or withdrawal without notice.*







Hayden Outdoors

Buyer Process

BUYER QUALIFICATION: Each potential purchaser will be evaluated with respect to very specific submission requirements. Confidentiality will be held in the highest regard. Sellers will be made aware of each potential purchaser's ability to perform, should that become their goal.

PROPERTY SHOWINGS: With regards to scheduling showings on your property, Hayden Outdoors understands and respects your livelihood and personal items. The property will be presented to potential purchasers by a Hayden Outdoors representative by appointment only, unless arranged otherwise.

REPRESENTATION OF OFFERS: Hayden Outdoors will advise and support sellers in the presentation and representation of offers. Hayden Outdoors will supply active and current marketing materials when dealing with each potential offer. Offers must be presented in a timely manner, and Hayden Outdoors brokers will travel to present the offers, and in special cases, Hayden Outdoors may execute a webinar for presentation.

BROKER PARTICIPATION: Hayden Outdoors welcomes outside brokers to bring buyers to purchase our properties. We offer cooperating commission rates to participating brokers. All properties marketed with Hayden Outdoors are exclusively promoted and listed through the real estate process.

EQUAL HOUSING: Hayden Outdoors is proud to be an Equal Housing Opportunity Brokerage. All real estate advertised is subject to the Federal Housing Act, which makes it illegal to advertise "any preference, limitation, or discrimination because of race, color, religion, sex, handicap, familial status, or national origin, or intention to make any such preference, limitation, or discrimination."

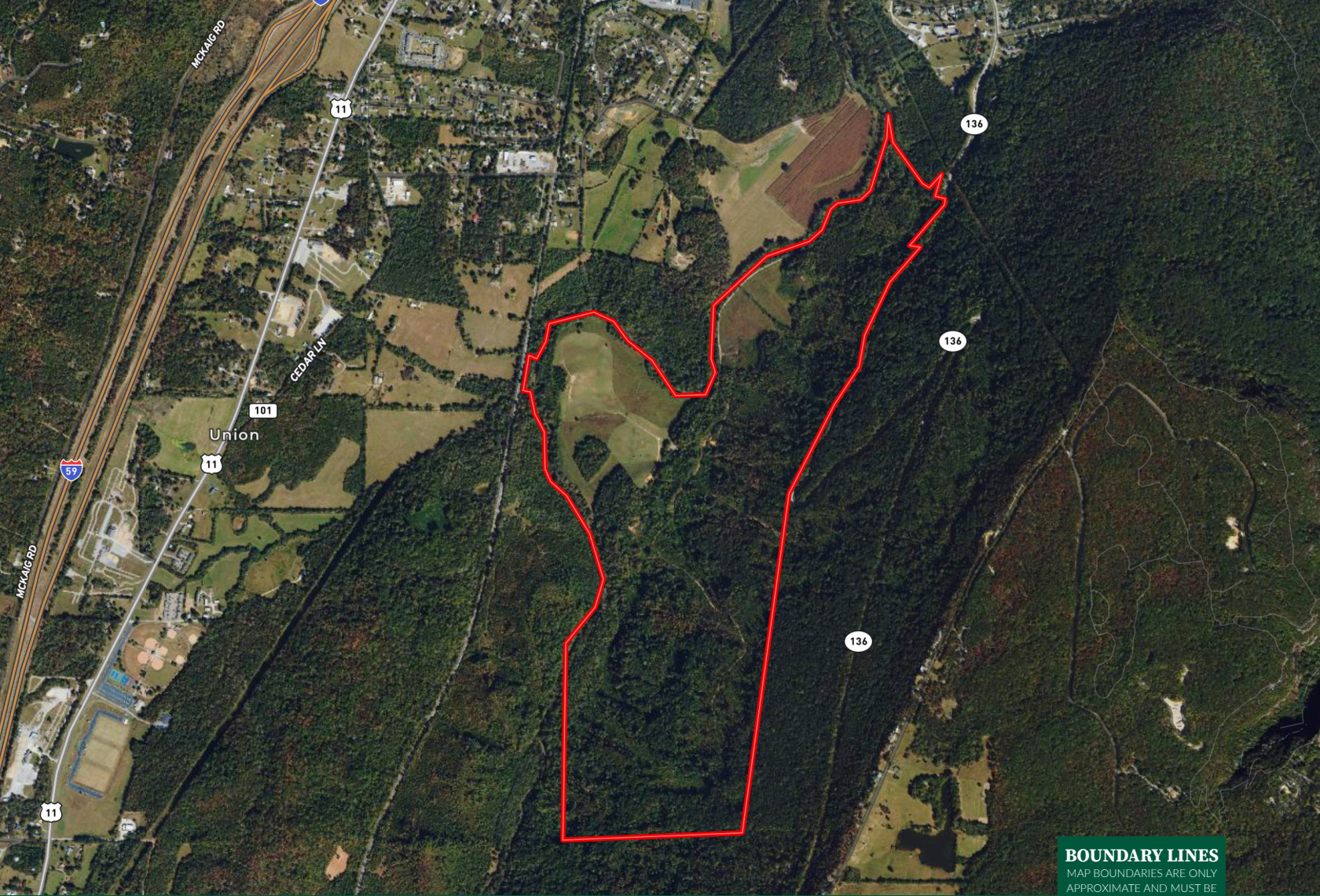


"The service you get transcends anything I've ever heard of. They literally turn your vision into reality. I mean, who else does that for you. Nobody"

- RICK STEINER, SELLER/BUYER

Scan to see more
testimonials








 Boundary



John Boehmig

 Associate Broker, Licensed in AL, GA, & CO
 JohnBoehmig@HaydenOutdoors.com
 256.926.8790


**HAYDEN
OUTDOORS**
REAL ESTATE

