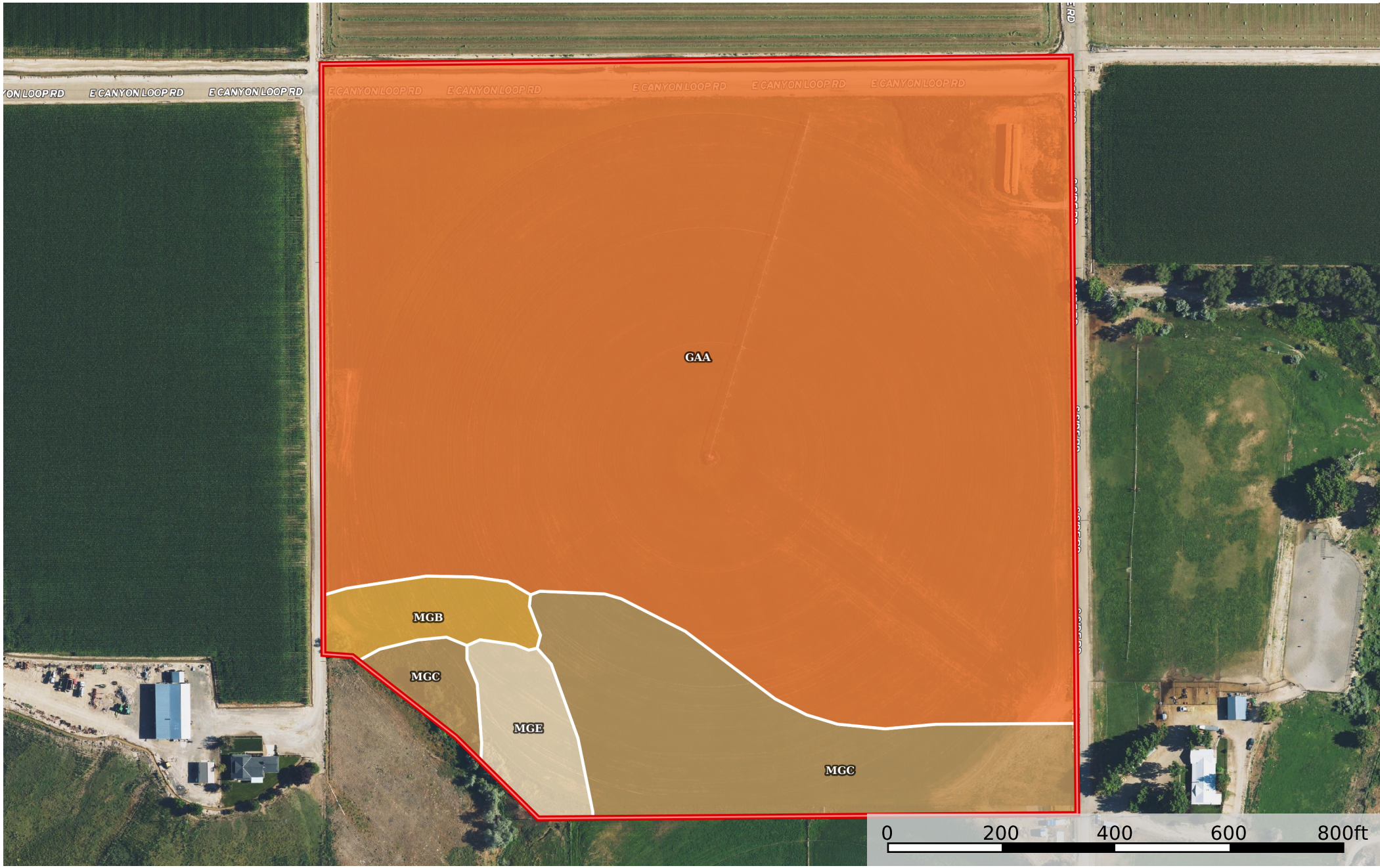


TBD Southside Rd, Homedale, ID (Hunt Field)

Owyhee County, Idaho, 38.48 AC +/-



 Boundary

|  Boundary 38.69 ac

SOIL CODE	SOIL DESCRIPTION	ACRES	%	CPI	NCCPI	CAP
GaA	Garbutt silt loam, 0 to 1 percent slopes	31.41	81.16	0	14	6c
MgC	Marsing loam, 3 to 7 percent slopes	5.29	13.67	0	13	6c
MgE	Marsing loam, 12 to 20 percent slopes	1.04	2.69	0	12	6c
MgB	Marsing loam, 1 to 3 percent slopes	0.95	2.45	0	13	6c
TOTALS		38.69(*)	100%	-	13.78	6.0

(*) Total acres may differ in the second decimal compared to the sum of each acreage soil. This is due to a round error because we only show the acres of each soil with two decimal.

Capability Legend

Increased Limitations and Hazards

Decreased Adaptability and Freedom of Choice Users

Land, Capability

	1	2	3	4	5	6	7	8
'Wild Life'	•	•	•	•	•	•	•	•
Forestry	•	•	•	•	•	•	•	
Limited	•	•	•	•	•	•	•	
Moderate	•	•	•	•	•	•		
Intense	•	•	•	•	•			
Limited	•	•	•	•				
Moderate	•	•	•					
Intense	•	•						
Very Intense	•							

Grazing Cultivation

(c) climatic limitations (e) susceptibility to erosion

(s) soil limitations within the rooting zone (w) excess of water