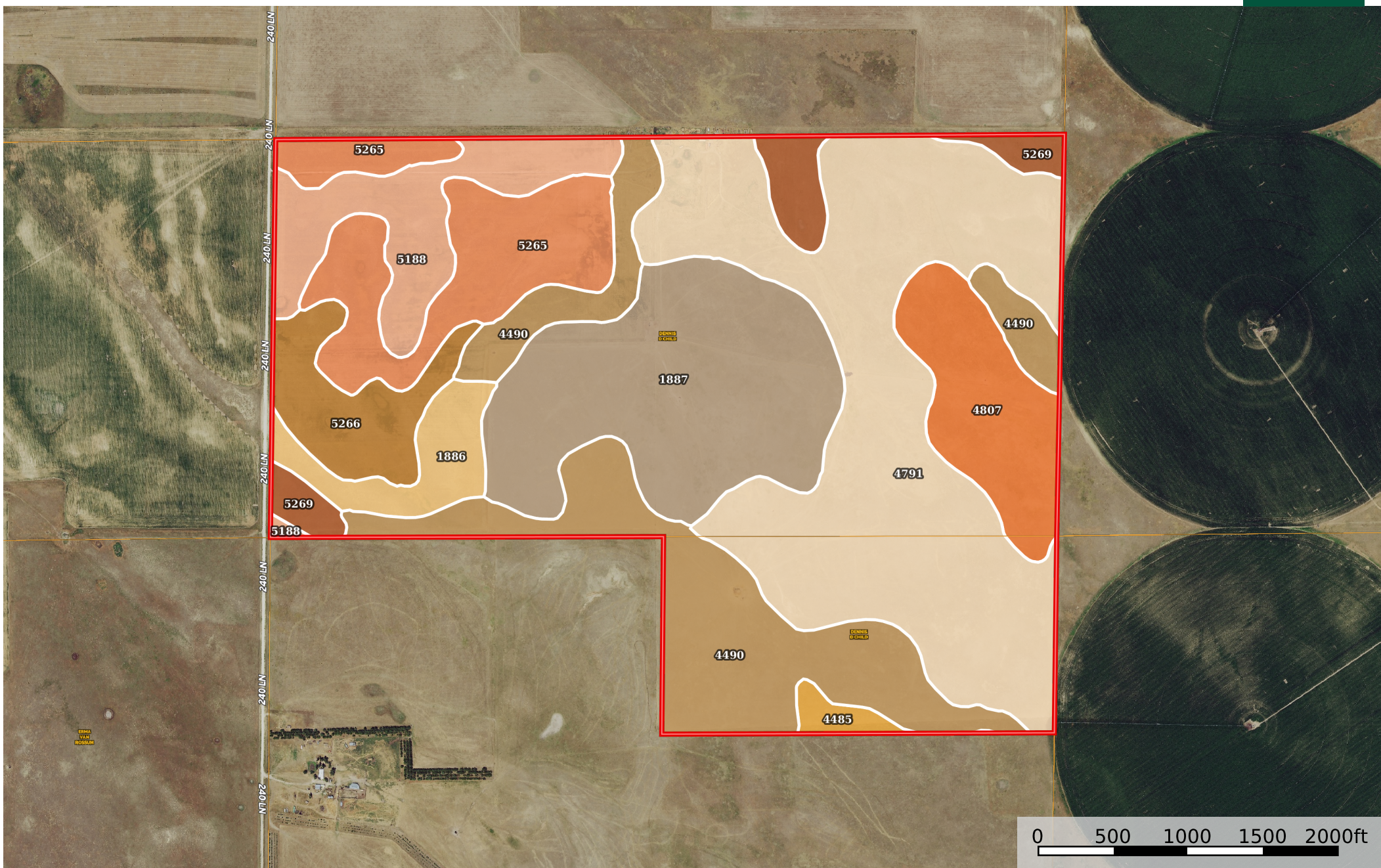



# Sheridan County Pasture 400+/- Ac

Sheridan County, Nebraska, 401 AC +/-



 Boundary

|  Boundary 400.92 ac

SOIL CODE	SOIL DESCRIPTION	ACRES	%	CPI	NCCPI	CAP
4791	Valentine fine sand, 3 to 9 percent slopes	123.89	30.9	19	19	6e
4490	Dunday loamy fine sand, 3 to 9 percent slopes	68.27	17.03	0	23	6e
1887	Valent fine sand, 9 to 20 percent slopes	66.95	16.7	0	15	6e
5265	Tuthill fine sandy loam, 0 to 3 percent slopes	39.46	9.84	0	31	3e
5188	Keya loam, 0 to 2 percent slopes	27.7	6.91	0	58	2c
4807	Valentine fine sand, rolling, 9 to 24 percent slopes	27.08	6.75	11	15	6e
5266	Tuthill fine sandy loam, 3 to 6 percent slopes	18.48	4.61	0	30	3e
1886	Valent fine sand, 3 to 9 percent slopes	13.17	3.28	0	15	6e
5269	Tuthill loamy fine sand, 3 to 9 percent slopes	12.64	3.15	0	28	6e
4485	Dunday loamy fine sand, 0 to 3 percent slopes	3.28	0.82	0	23	4e
TOTALS		400.92(*)	100%	6.61	23.31	5.27









(\*) Total acres may differ in the second decimal compared to the sum of each acreage soil. This is due to a round error because we only show the acres of each soil with two decimal.

## Capability Legend

Increased Limitations and Hazards

Decreased Adaptability and Freedom of Choice Users

Land, Capability

								
	1	2	3	4	5	6	7	8
'Wild Life'	•	•	•	•	•	•	•	•
Forestry	•	•	•	•	•	•	•	
Limited	•	•	•	•	•	•	•	
Moderate	•	•	•	•	•	•		
Intense	•	•	•	•	•			
Limited	•	•	•	•				
Moderate	•	•	•					
Intense	•	•						
Very Intense	•							

### Grazing Cultivation

(c) climatic limitations (e) susceptibility to erosion

(s) soil limitations within the rooting zone (w) excess of water