

Ovid Irrigated 55

55.00 Acres

Sedgwick County, CO

\$357,500



HAYDEN  OUTDOORS.

Ovid Irrigated 55

TOTAL ACRES:

55.00

PRICE:

\$357,500

COUNTY:

Sedgwick County

CLOSEST TOWN:

Ovid, CO

Activities & Amenities:

Farm/Crops/Ag

Irrigation

Land Details:

Address: (TBD) County Rd. 32,

Ovid, Colorado 80744, USA

Closest Town: Ovid

Total Acres: 55.00

Deeded Acres: 55.00

Leased Acres: 0.00

Include Business?: Yes

Source of lot size: Other

Property Summary

Located in Sedgwick County, this approximate 55 +/- acre irrigated farm offers an opportunity to add an irrigated parcel to your operation. Located just one mile north of the town of Ovid, this farm offers easy access to grain marketing facilities and locational efficiencies not often found in other offerings. This farm is being sold subject to survey at a price of \$6,500/acre. Price adjustments will be made based on the surveyed acreage.

Land

There are an estimated 55 +/- acres irrigated by a properly functioning pivot. Along with the pivot, there is 70 acres of JID water and a 1000+ GPM well. The new farm boundary will run to the center of the creek at the NE corner to allow water back into the creek. With loam soils and a great location, this 55 +/- acre farm is the perfect addition to your land holdings or would make an excellent hands-off investment opportunity. This flat-lying and well-irrigated parcel farms easily and has quick access to town and HWY 138 making this an easy candidate to add to your portfolio. Open to farm for the 2024 crop season or take advantage of the tenant farmer in place. The choice is yours.

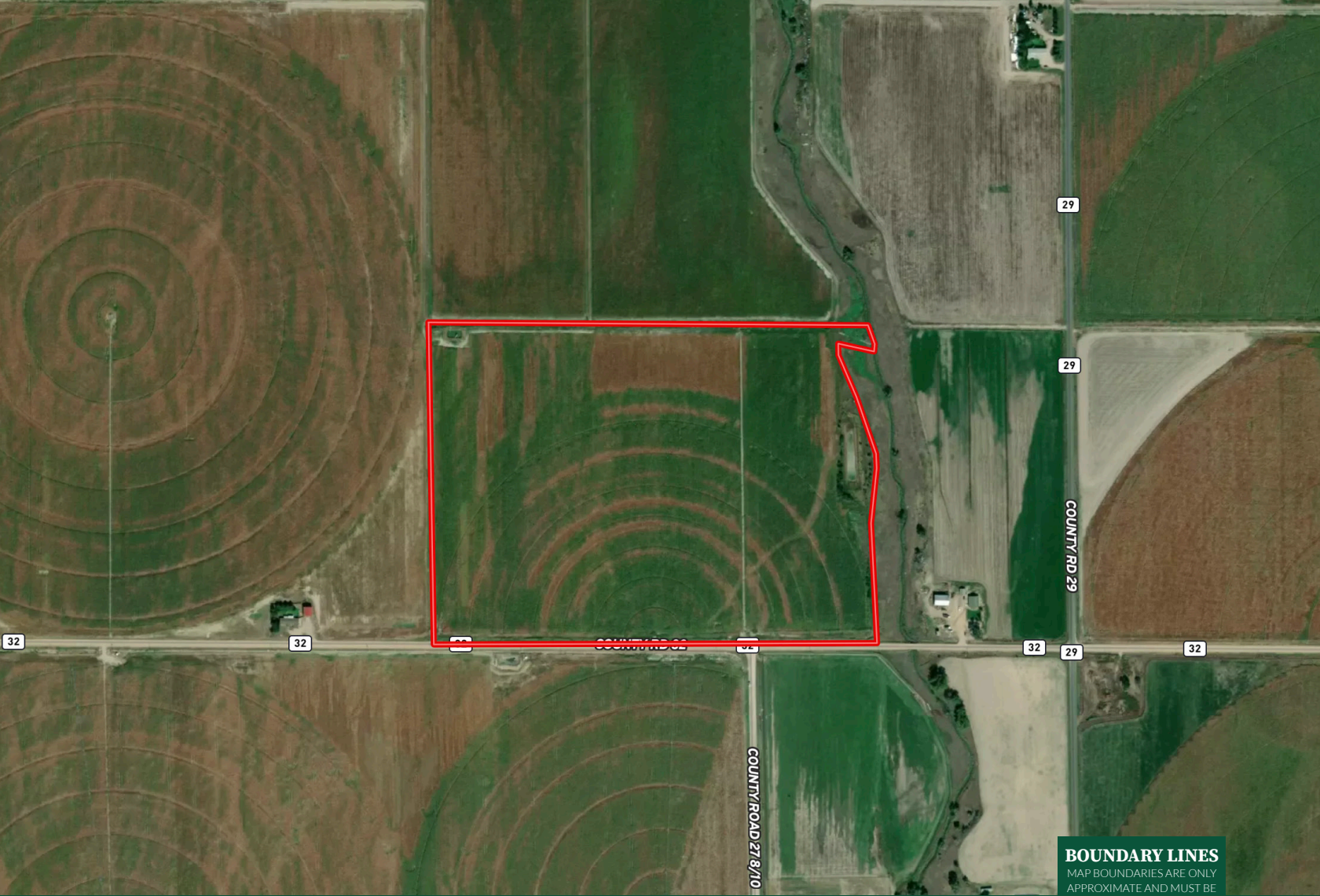
Location

Ovid is located in Sedgwick County, Colorado. Ovid is roughly 40 miles to Sidney, Nebraska and 175 miles from Denver, Colorado.

*All information provided is deemed reliable but is not guaranteed and should be independently verified. Hayden Outdoors and its affiliates makes no representation or warranties as to the accuracy, reliability, or completeness of the information, text, property boundaries, graphics links or other items contained in any website, print, or otherwise linked to or from this website. The sale offering is made subject to errors, omissions, change of price, prior sale or withdrawal without notice.

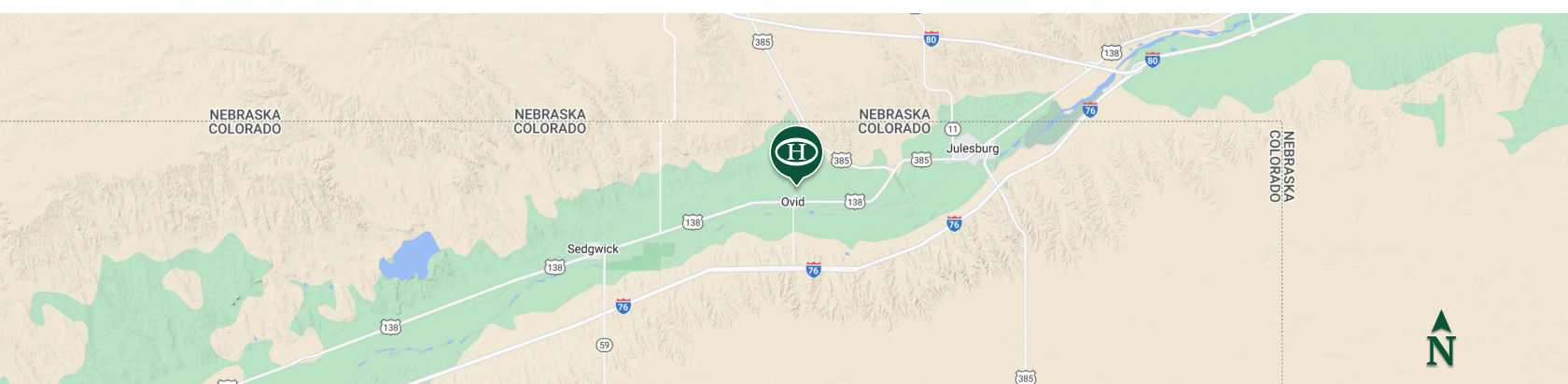









BOUNDARY LINES
MAP BOUNDARIES ARE ONLY
APPROXIMATE AND MUST BE
VERIFIED FOR ACCURACY.

 Boundary



John Herrity

-  Licensed in CO, NE, SD, IA, & AK
-  John@HaydenOutdoors.com
-  970.685.0645