

PLAT OF OUTLOT 26

of _____ lying in the NE¹/₄ _____, Section _____ 19 _____, Township _____ 155 N _____, Range _____ 83 W _____

Owners Donald R & Darla K Erickson

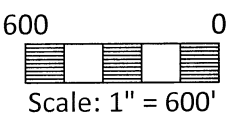
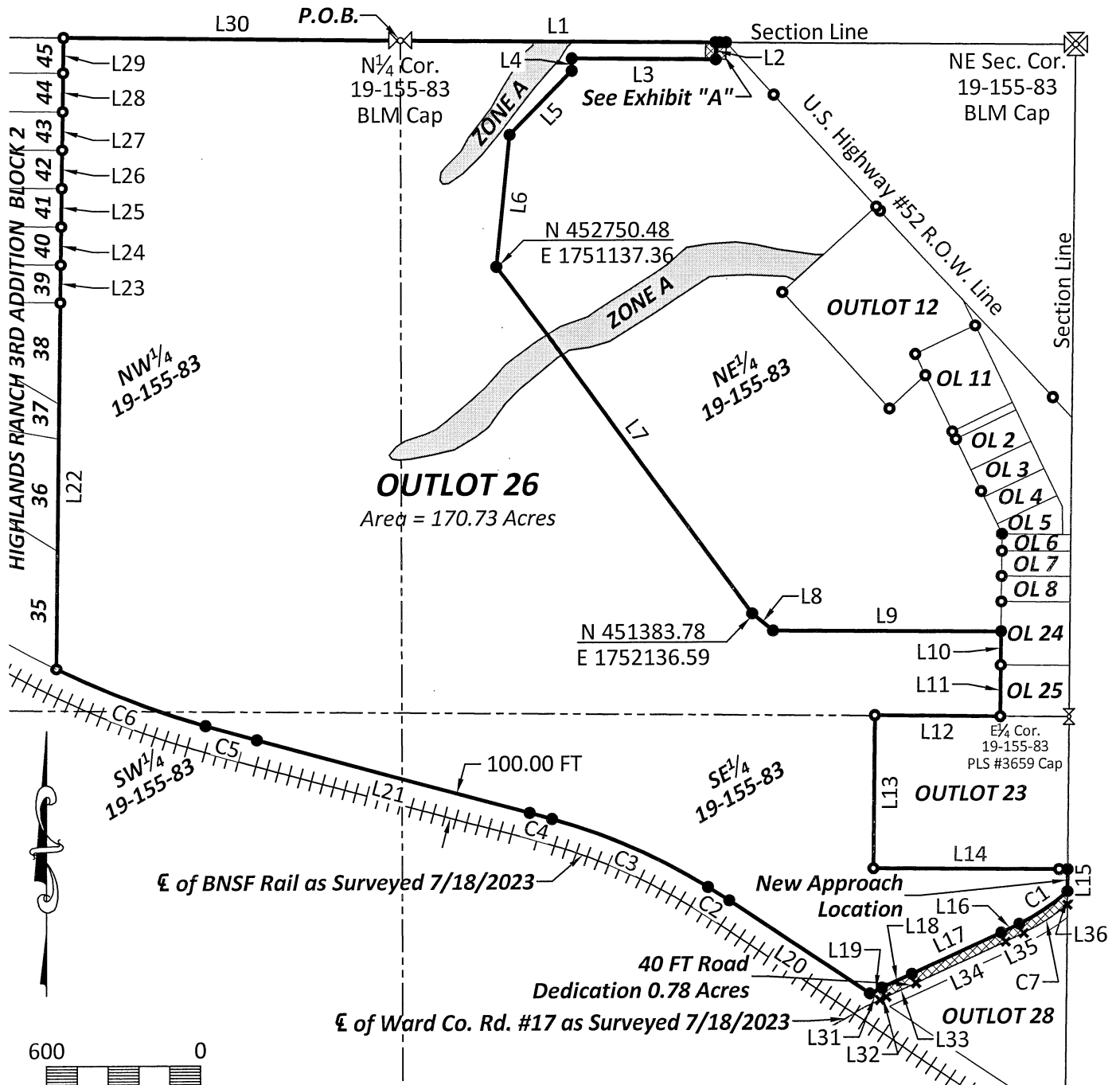
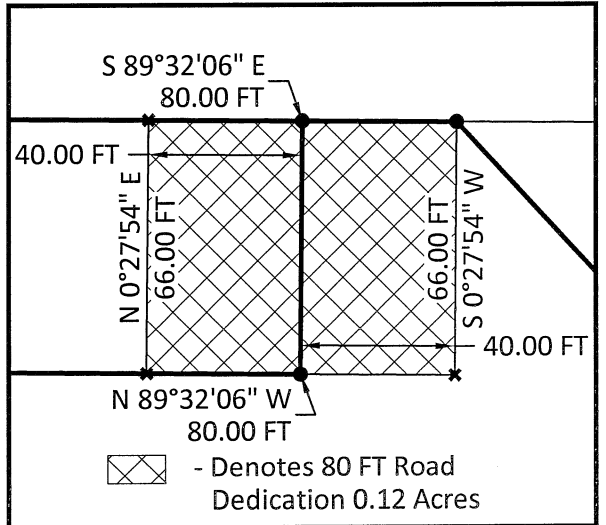


Exhibit "A" 1" = 50'



- - Denotes Property Corners Set 18" #5 Rebar with PLS Cap #6134
- - Denotes Property Corners Found
- ✕ - Denotes Traverse Point
- ⊠ - Denotes Section Corners
- ⊞ - Denotes Quarter Corners

NOTES:

- Basis of Bearing and Coordinates obtained from NGS OPUS Solution NAD 83 North Dakota North (3301) Int. Feet.
- Bearings and Distances may vary from previous plats due to different methods of measurement.
- Plat is subject to all prior Easements of record.
- Flood Information obtained off of FEMA FIRM Map Number 38101C0757 D, Effective Date: January 19, 2000.

PLAT OF OUTLOT 26

of _____ lying in the NE $\frac{1}{4}$ _____, Section _____ 19 _____, Township _____ 155 N _____, Range _____ 83 W _____

Owners Donald R & Darla K Erickson

Line Table		
Line #	Direction	Length
L1	S 89°32'06" E	1231.72 FT
L2	S 0°27'54" W	66.00 FT
L3	N 89°32'06" W	562.26 FT
L4	S 0°27'54" W	47.33 FT
L5	S 44°14'23" W	346.88 FT
L6	S 5°35'18" W	519.74 FT
L7	S 36°10'16" E	1693.04 FT
L8	S 50°12'18" E	106.04 FT
L9	S 89°32'06" E	892.80 FT
L10	S 0°32'46" W	132.34 FT
L11	S 0°34'24" W	198.79 FT
L12	N 89°18'39" W	490.45 FT
L13	S 0°32'24" W	601.96 FT
L14	S 89°26'56" E	757.88 FT
L15	S 0°32'46" W	86.43 FT
L16	S 64°12'08" W	77.47 FT
L17	S 65°14'34" W	384.87 FT
L18	S 65°31'53" W	128.89 FT

Line Table		
Line #	Direction	Length
L19	S 64°27'22" W	51.81 FT
L20	N 56°20'17" W	662.89 FT
L21	N 74°49'54" W	1104.52 FT
L22	N 0°36'57" E	1437.57 FT
L23	N 0°37'13" E	150.04 FT
L24	N 0°38'01" E	149.94 FT
L25	N 0°35'37" E	150.00 FT
L26	N 0°36'41" E	149.92 FT
L27	N 0°37'38" E	150.03 FT
L28	N 0°37'04" E	150.00 FT
L29	N 0°36'21" E	136.34 FT
L30	S 89°22'45" E	1315.37 FT
L31	N 56°20'17" W	46.57 FT
L32	S 64°27'22" W	27.59 FT
L33	S 65°31'53" W	128.61 FT
L34	S 65°14'34" W	385.33 FT
L35	S 64°12'08" W	77.77 FT
L36	S 0°32'46" W	53.58 FT

Curve Table					
Curve #	Length	Radius	Delta	Chord Direction	Chord Length
C1	227.29 FT	773.08 FT	16°50'44"	S 55°57'03" W	226.47 FT
C2	98.37 FT	5005.03 FT	1°07'34"	N 57°26'37" W	98.37 FT
C3	668.97 FT	2433.67 FT	15°44'59"	N 65°51'44" W	666.87 FT
C4	90.43 FT	4554.37 FT	1°08'16"	N 74°11'23" W	90.43 FT
C5	208.36 FT	13698.13 FT	0°52'17"	N 74°22'13" W	208.36 FT
C6	622.98 FT	3542.68 FT	10°04'32"	N 69°03'37" W	622.18 FT
C7	202.42 FT	813.08 FT	14°15'52"	S 57°14'14" W	201.90 FT



WOLD
ENGINEERING, P.C.

Bottineau: 228-2292
Minot: 852-0338
Bismarck: 258-9227

PLAT OF OUTLOT 26

SHEET 4 OF 4

of _____ lying in the NE $\frac{1}{4}$ _____, Section _____ 19 _____, Township _____ 155 N _____, Range _____ 83 W _____

Owners Donald R & Darla K Erickson

DESCRIPTION

Beginning at the North Quarter Corner of Section 19, Township 155 N, Range 83 W, of the 5th Principal Meridian, Ward County, North Dakota; Thence S 89°32'06" E, on the North Line of the Northeast Quarter, a distance of 1231.72 FT; Thence S 0°27'54" W, being Perpendicular with the North Line of the Northeast Quarter, of said Section 19, a distance of 66.00 FT; Thence N 89°32'06" W, being Parallel with the North Line of the Northeast Quarter, of said Section 19, a distance of 562.26 FT; Thence S 0°27'54" W, being Perpendicular with the North Line of the Northeast Quarter, of said Section 19, a distance of 47.33 FT; Thence S 44°14'23" W, a distance of 346.88 FT; Thence S 5°35'18" W, a distance of 519.74 FT; Thence S 36°10'16" E, a distance of 1693.04 FT; Thence S 50°12'18" E, a distance of 106.04 FT; Thence S 89°32'06" E, being Parallel with the North Line of the Northeast Quarter, of said Section 19, a distance of 892.80 FT, to a Point being on the West Line of Outlot 24, a Plat being on file at the Ward County Recorder's Office; Thence S 0°32'46" W, on the West Line of said Outlot 24, a distance of 132.34 FT, to the Southwest Property Corner, of said Outlot 24; Thence S 0°34'24" W, on the West Line of Outlot 25, a Plat being on file at the Ward County Recorder's Office, a distance of 198.79 FT, to the Southwest Property Corner, of said Outlot 25; Thence N 89°18'39" W, on the North Line of Outlot 23, a Plat being on file at the Ward County Recorder's Office, a distance of 490.45 FT, to the Northwest Property Corner of said Outlot 23; Thence S 0°32'24" W, on the West Line of said Outlot 23, a distance of 601.96 FT, to the Southwest Property Corner of said Outlot 23; Thence S 89°26'56" E, on the South Line of said Outlot 23, a distance of 757.88 FT, to a point being on the East Line of the Southeast Quarter, of said Section 19; Thence S 0°32'46" W, on the East Line of the Southeast Quarter, of said Section 19, a distance of 86.43 FT; Thence on a Curve to the Right, said Curve having a Length of 227.29 FT, a Radius of 773.08 FT, and a Delta Angle of 16°50'44"; Thence S 64°12'08" W, a distance of 77.47 FT; Thence S 65°14'34" W, a distance of 384.87 FT; Thence S 65°31'53" W, a distance of 128.89 FT; Thence S 64°27'22" W, a distance of 51.81 FT, to a Point being on the Northerly BNSF Railroad Right of Way Line; Thence N 56°20'17" W, on said BNSF Right of Way Line, a distance of 662.89 FT; Thence on said BNSF Right of Way Line, on a Curve to the Left, said Curve having a Length of 98.37 FT, a Radius of 5005.03 FT, and a Delta Angle of 1°07'34"; Thence on said BNSF Right of Way Line, on a Curve to the Left, said Curve having a Length of 668.97 FT, a Radius of 2433.67 FT, and a Delta Angle of 15°44'59"; Thence on said BNSF Right of Way Line, on a Curve to the Left, said Curve having a Length of 90.43 FT, a Radius of 4554.37 FT, and a Delta Angle of 1°08'16"; Thence N 74°49'54" W, on said BNSF Right of Way Line, a distance of 1104.52 FT; Thence on said BNSF Right of Way Line, on a Curve to the Right, said Curve having a Length of 208.36 FT, a Radius of 13698.13 FT, and a Delta Angle of 0°52'17"; Thence on said BNSF Right of Way Line, on a Curve to the Right, said Curve having a Length of 622.98 FT, a Radius of 3542.68 FT, and a Delta Angle of 10°04'32", to the Southeast Property Corner of Block 2, of Highlands Ranch 3rd Addition, a Plat being on file at the Ward County Recorder's Office; Thence N 0°36'57" E, on the East Line of said Block 2, a distance of 1437.57 FT; Thence N 0°37'13" E, on the East Line of said Block 2, a distance of 150.04 FT; Thence N 0°38'01" E, on the East Line of said Block 2, a distance of 149.94 FT; Thence N 0°35'37" E, on the East Line of said Block 2, a distance of 150.00 FT; Thence N 0°36'41" E, on the East Line of said Block 2, a distance of 149.92 FT; Thence N 0°37'38" E, on the East Line of said Block 2, a distance of 150.03 FT; Thence N 0°37'04" E, on the East Line of said Block 2, a distance of 150.00 FT; Thence N 0°36'21" E, on the East Line of said Block 2, a distance of 136.34 FT, to a Point being on the North Line of the Northwest Quarter, of said Section 19; Thence S 89°22'45" E, on the North Line of the Northwest Quarter, of said Section 19, a distance of 1315.37 FT, to the Point of Beginning.

Said described tracts of land contains 170.73 Acres more or less.



WOLD
ENGINEERING, P.C.

Bottineau: 228-2292
Minot: 852-0338
Bismarck: 258-9227