

Hinkle Lake 215

215.00 Acres | Scott County, AR | \$542,500



HAYDEN  OUTDOORS.

Hinkle Lake 215

TOTAL ACRES:

215.00

PRICE:

\$542,500

COUNTY:

Scott County

CLOSEST TOWN:

Waldron, AR

Activities & Amenities:

ATV/Off Road
Borders Public Lands
Cycling/Mountain Biking
Development Potential
Farm/Crops/Ag
Fishing
Hiking/Climbing
Hunting - Big Game, Predator/
Varmint, Small Game, Turkey
Pond/Lake
Stream/River
Timber
Water Access
Water View
Waterfront
Wooded

Land Details

Address: TBD Hinkle Dam Road,
Waldron, Arkansas 72958, USA

Closest Town: Waldron

Total Acres: 215.00

Source of lot size: Assessor/Tax Data

Property Summary

Hinkle Lake 215 is an amazing tract completely surrounded by over 340,000 acres of the Ouachita National Forest. A watershed lake can be found in the property's south west corner, giving access to the entire lake. Located less than a mile from Hinkle Lake, whose spillway creates a beautiful creek running through this property, offering amazing fishing and recreational opportunities.

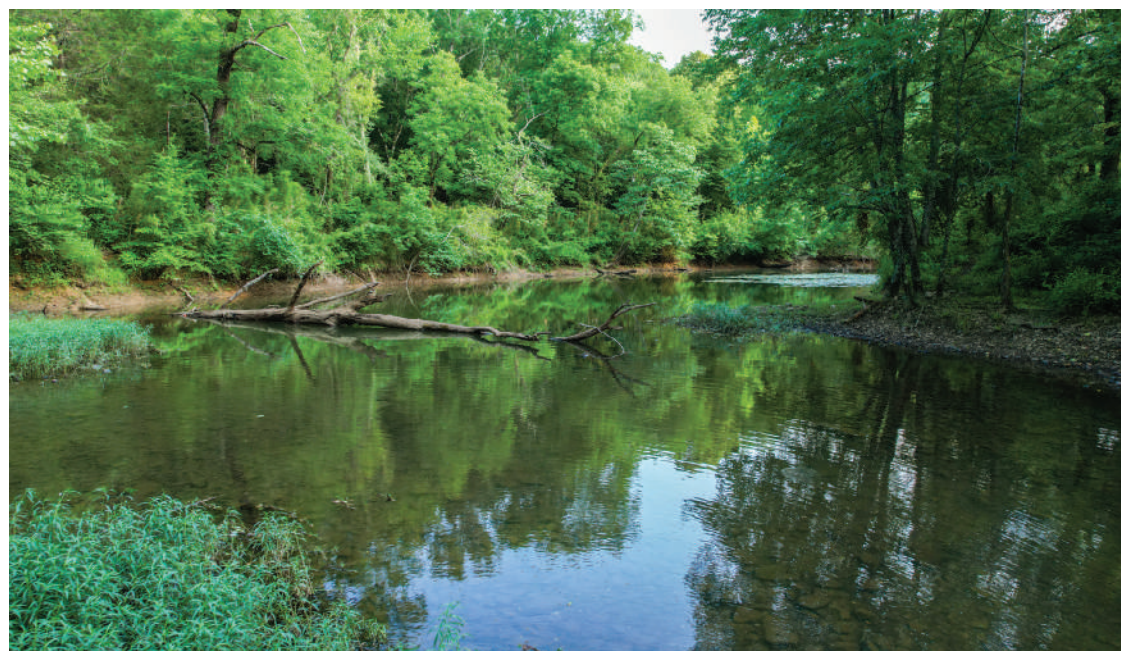
Land

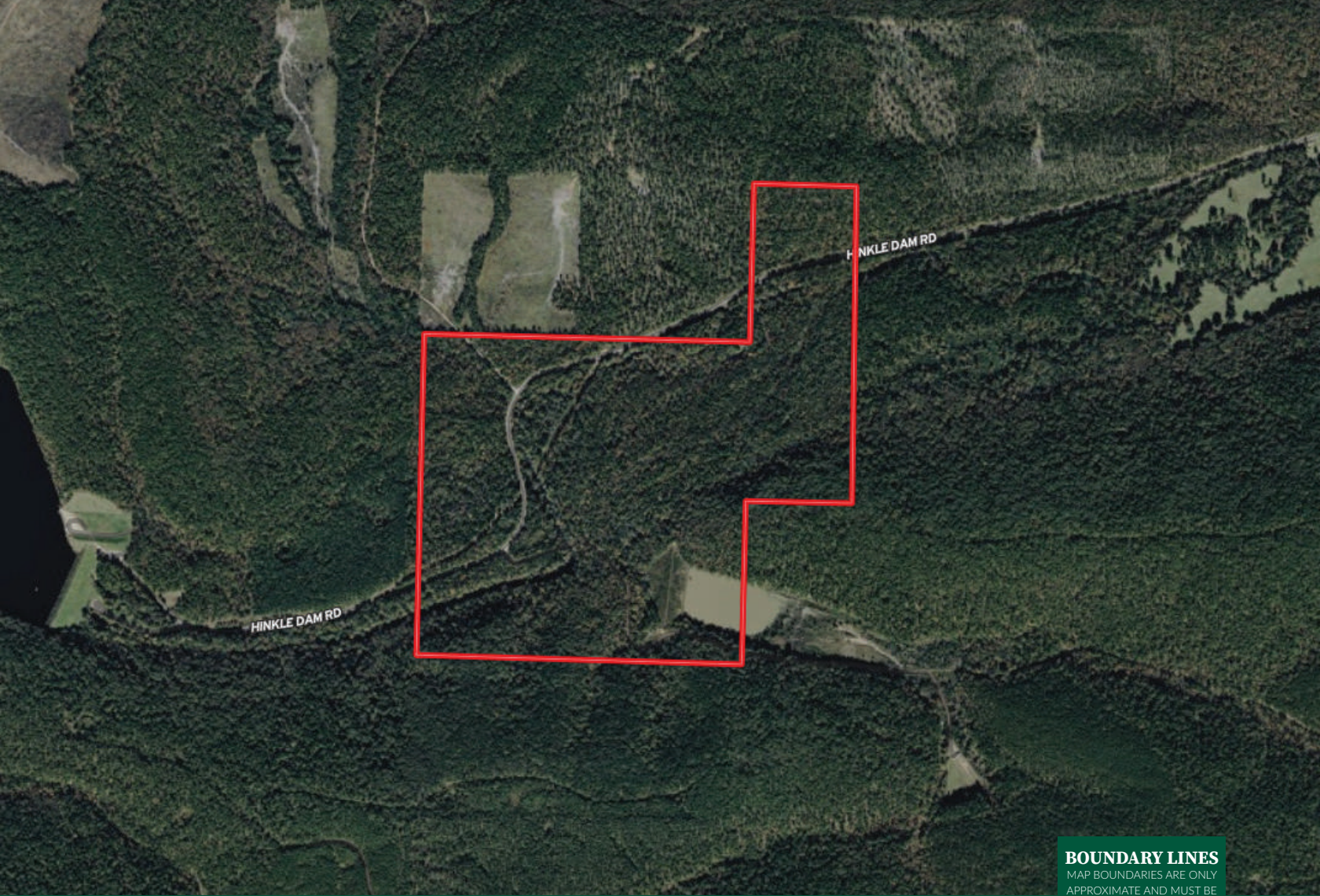
Less than a mile up the road is the 960-acre Lake Hinkle, known for large mouth bass, crappie and catfish and also also boasts camping units complete with a table, trailer pad, cooking grill, lantern post, and parking spur.

This 215-acre offering has both paved road frontage as well as a county road through the property makes access incredible.

*All information provided is deemed reliable but is not guaranteed and should be independently verified. Hayden Outdoors and its affiliates makes no representation or warranties as to the accuracy, reliability, or completeness of the information, text, property boundaries, graphics links or other items contained in any website, print, or otherwise linked to or from this website. The sale offering is made subject to errors, omissions, change of price, prior sale or withdrawal without notice.

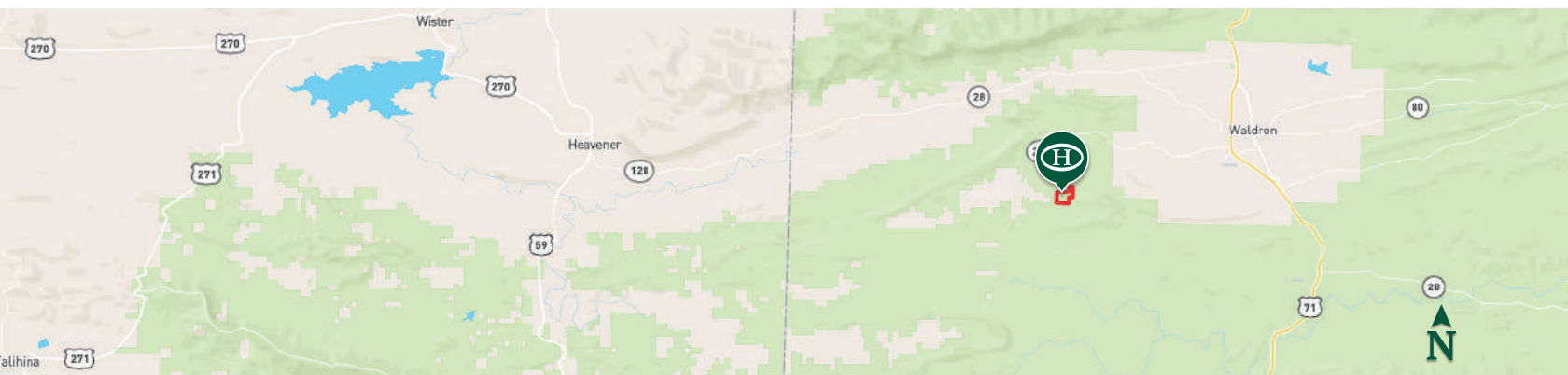






 Boundary

BOUNDARY LINES
 MAP BOUNDARIES ARE ONLY
 APPROXIMATE AND MUST BE
 VERIFIED FOR ACCURACY.



HAYDEN OUTDOORS

FARM, RANCH & RECREATIONAL REAL ESTATE



Allen Treadwell

📍 Salesperson, Licensed in AR, KS, MO & OK
 ✉️ Allen@HaydenOutdoors.com
 📞 479.903.4109



Jeff Lovan

📍 Salesperson, Licensed in AR, KS, MO & IA
 ✉️ JeffLovan@HaydenOutdoors.com
 📞 417.252.1463