

Severance Retreat

3.46 Acres | Weld County, CO | \$600,000



HAYDEN  OUTDOORS.

Severance Retreat

TOTAL ACRES:

3.46

PRICE:

\$600,000

COUNTY:

Weld County

CLOSEST TOWN:

Fort Collins, CO

Activities & Amenities:

Developmental Potential
House/Cabin
Equestrian/Horse Property
Outbuilding/Barn/Shed/Shop

Property Summary:

Nestled amidst the expansive Colorado hay and wheat fields, this property offers a captivating panorama of the majestic Rocky Mountains, providing an unparalleled opportunity to possess a slice of heavenly serenity. Known as Severance Retreat, this hidden gem is discretely situated in one of Colorado's most sought-after regions.

Land Details:

Total Acres: 3.46
Estimated Taxes: \$1,176 - 2022
Source of Lot Size: Assessor/Tax Data

Land:

The property encompasses approximately 3.46 +/- acres, allowing ample room for expansion and an abundance of space for unrestricted movement. The commanding presence of the Rocky Mountain Range dominates the horizon, with Longs Peak captivating the forefront and extending its grandeur as far as the eye can behold, spanning from the northern to southern expanse. Its enviable location provides convenient access to numerous beloved towns and cities in Northern Colorado.

Building Details:

Homes: 1
Type of Home(s): Ranch
Finished SQFT: 1365
Bedrooms: 3
Bathrooms: 2
Parking Type: Driveway
Heating Systems: Forced Air





Improvements:

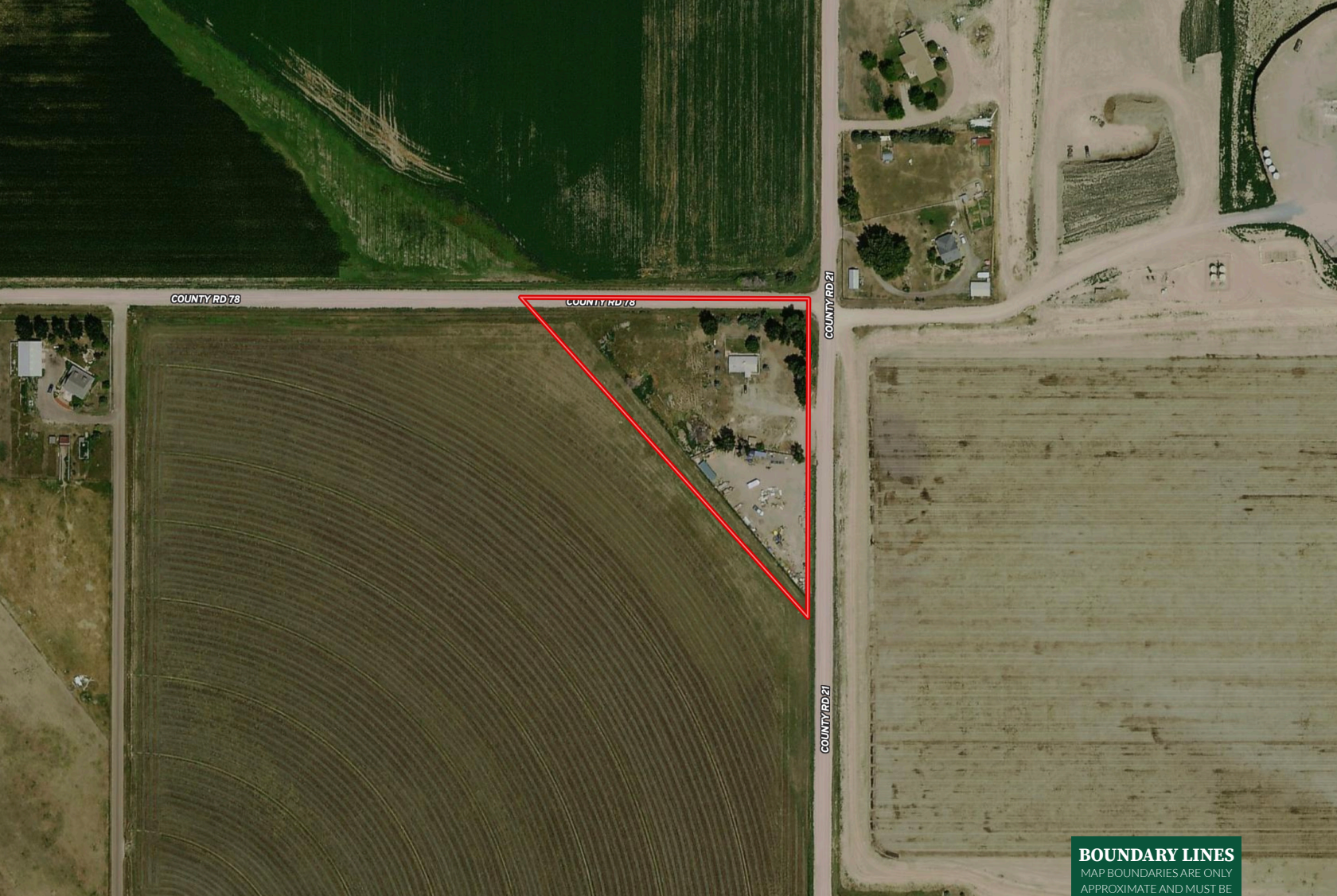
The property boasts notable improvements, including a tidy and comfortable 1,365 square foot home with three bedrooms and two baths. Surrounded by mature trees and shrubs, the dwelling exudes a soothing ambiance. At the rear, a deck beckons for outdoor grilling and leisurely lounging, leading to an inviting and spacious backyard adorned with an exquisite white three-rail fence.

Location:

Situated just four miles south, the charming town of Windsor emanates a cozy, small-town atmosphere while offering modern conveniences for everyday living. A mere seven-mile journey westward leads to Fort Collins, a city often heralded as the best place to reside in the entire nation. Furthermore, Greeley, another prominent city in northern Colorado, is conveniently located just 20 minutes to the east.

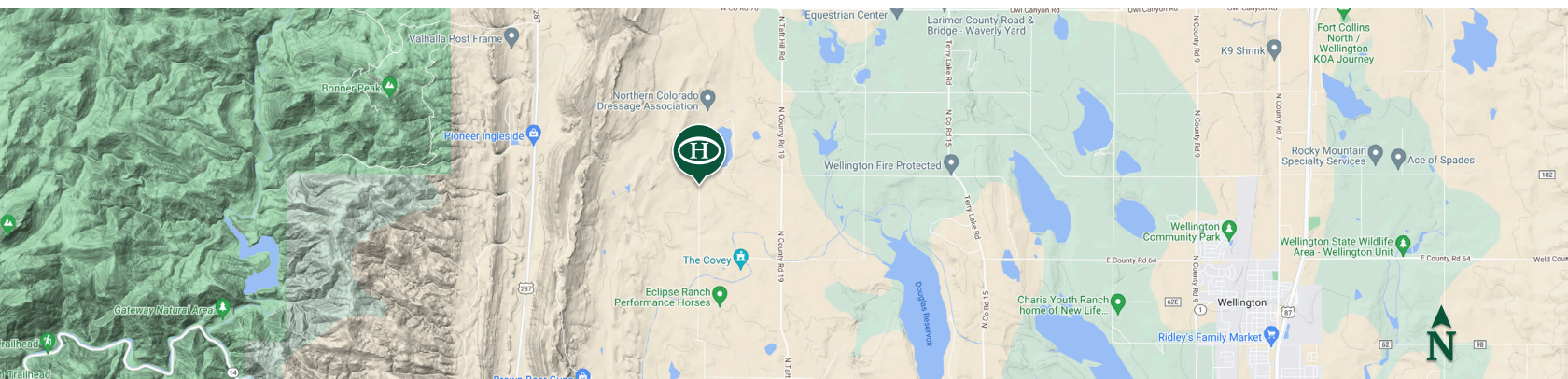
*All information provided is deemed reliable but is not guaranteed and should be independently verified. Hayden Outdoors and its affiliates makes no representation or warranties as to the accuracy, reliability, or completeness of the information, text, property boundaries, graphics links or other items contained in any website, print, or otherwise linked to or from this website. The sale offering is made subject to errors, omissions, change of price, prior sale or withdrawal without notice.





BOUNDARY LINES
 MAP BOUNDARIES ARE ONLY
 APPROXIMATE AND MUST BE
 VERIFIED FOR ACCURACY.

 Boundary
  Cabin
  BLM
  Fish & Wildlife






HAYDEN OUTDOORS.

FARM, RANCH & RECREATIONAL REAL ESTATE






Dax Hayden

 Licensed in CO, KS, NE, NM, OK, & WY
 Dax@HaydenOutdoors.com
 303.619.6774



Brin Hayden

 Licensed in CO & NE
 Brin@HaydenOutdoors.com
 970.817.1079