

Common Land Unit PLSS

- Non-Cropland
- Tract Boundary

Wetland Determination Identifiers

- Restricted Use
- ▼ Limited Restrictions
- Exempt from Conservation Compliance Provisions

Unless noted on field:

- | | |
|-----------------------------|-----------------------|
| 1/ All Wheat HRW, NI, GR | 6/ Grass NAG, NI, LS |
| 2/ All Sorghum GRS, NI, GR | 7/ Grass SMO, NI, FG |
| 3/ All Corn YEL, NI, GR | 8/ Grass SMO, NI, LS |
| 4/ All Soybeans COM, NI, GR | 9/ Grass, NAG, NI, GZ |
| 5/ Grass NAG, NI, FG | |

2023 Program Year

Map Created October 19, 2022

Farm 4454

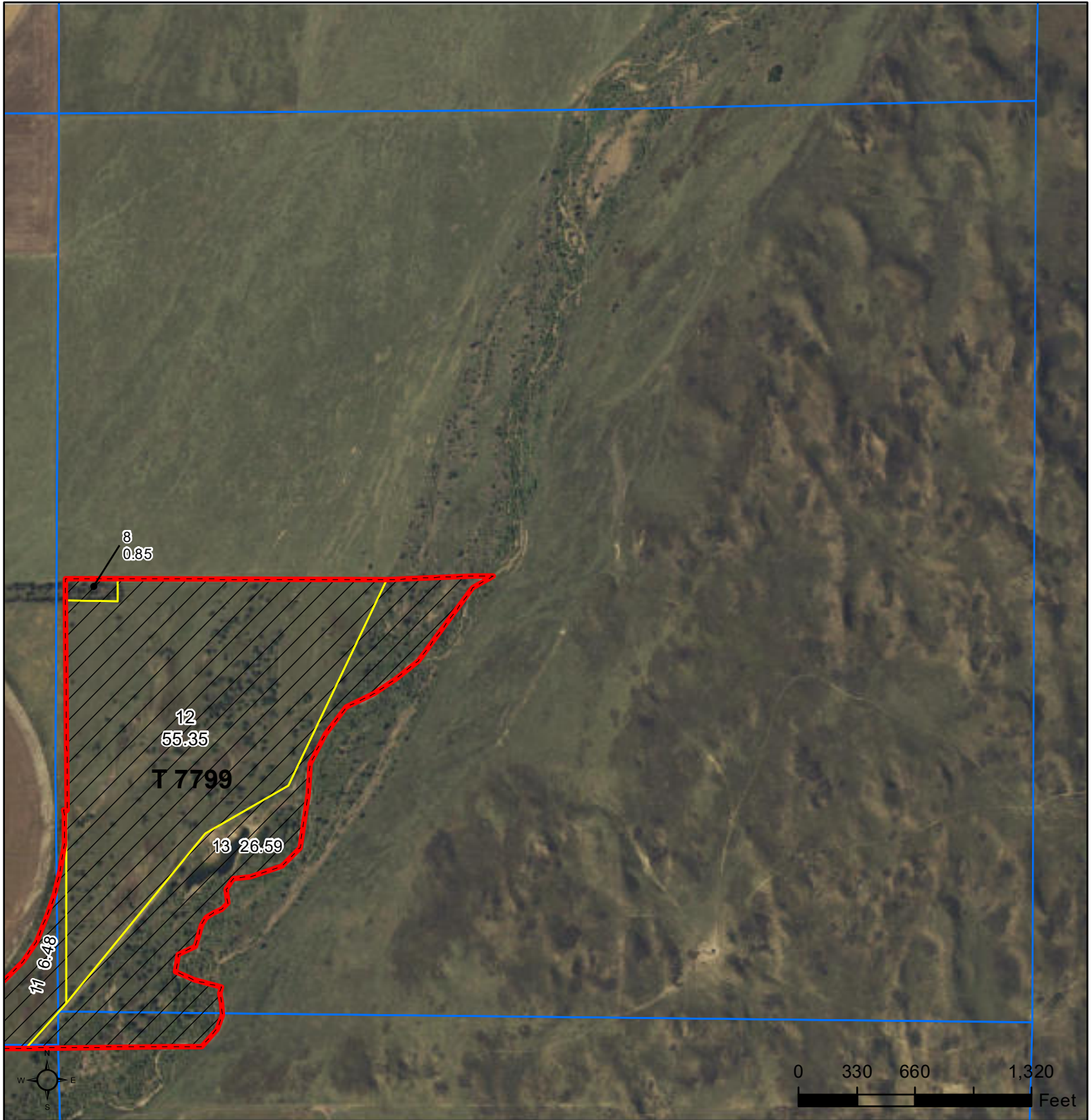
Tract 7799

20-26-20

Displayed over 2021 NAIP

Tract Cropland Total: 0.00 acres

United States Department of Agriculture (USDA) Farm Service Agency (FSA) maps are for FSA Program administration only. This map does not represent a legal survey or reflect actual ownership; rather it depicts the information provided directly from the producer and/or National Agricultural Imagery Program (NAIP) imagery. The producer accepts the data 'as is' and assumes all risks associated with its use. USDA-FSA assumes no responsibility for actual or consequential damage incurred as a result of any user's reliance on this data outside FSA Programs. Wetland identifiers do not represent the size, shape, or specific determination of the area. Refer to your original determination (CPA-026 and attached maps) for exact boundaries and determinations or contact USDA Natural Resources Conservation Service (NRCS).



Common Land Unit PLSS

Non-Cropland
 Tract Boundary

Wetland Determination Identifiers

- Restricted Use
- ▼ Limited Restrictions
- Exempt from Conservation Compliance Provisions

Unless noted on field:

- | | |
|-----------------------------|-----------------------|
| 1/ All Wheat HRW, NI, GR | 6/ Grass NAG, NI, LS |
| 2/ All Sorghum GRS, NI, GR | 7/ Grass SMO, NI, FG |
| 3/ All Corn YEL, NI, GR | 8/ Grass SMO, NI, LS |
| 4/ All Soybeans COM, NI, GR | 9/ Grass, NAG, NI, GZ |
| 5/ Grass NAG, NI, FG | |

2023 Program Year

Map Created October 19, 2022

Farm 4454
Tract 7799
21-26-20

Displayed over 2021 NAIP

Tract Cropland Total: 0.00 acres

United States Department of Agriculture (USDA) Farm Service Agency (FSA) maps are for FSA Program administration only. This map does not represent a legal survey or reflect actual ownership; rather it depicts the information provided directly from the producer and/or National Agricultural Imagery Program (NAIP) imagery. The producer accepts the data 'as is' and assumes all risks associated with its use. USDA-FSA assumes no responsibility for actual or consequential damage incurred as a result of any user's reliance on this data outside FSA Programs. Wetland identifiers do not represent the size, shape, or specific determination of the area. Refer to your original determination (CPA-026 and attached maps) for exact boundaries and determinations or contact USDA Natural Resources Conservation Service (NRCS).



Common Land Unit PLSS

- Non-Cropland
- Tract Boundary

Wetland Determination Identifiers

- Restricted Use
- ▼ Limited Restrictions
- Exempt from Conservation
- Compliance Provisions

Unless noted on field:

- | | |
|-----------------------------|-----------------------|
| 1/ All Wheat HRW, NI, GR | 6/ Grass NAG, NI, LS |
| 2/ All Sorghum GRS, NI, GR | 7/ Grass SMO, NI, FG |
| 3/ All Corn YEL, NI GR | 8/ Grass SMO, NI, LS |
| 4/ All Soybeans COM, NI, GR | 9/ Grass, NAG, NI, GZ |
| 5/ Grass NAG, NI, FG | |

2023 Program Year

Map Created October 19, 2022

Farm 4454
Tract 7799
28-26-20

Displayed over 2021 NAIP

Tract Cropland Total: 0.00 acres

United States Department of Agriculture (USDA) Farm Service Agency (FSA) maps are for FSA Program administration only. This map does not represent a legal survey or reflect actual ownership; rather it depicts the information provided directly from the producer and/or National Agricultural Imagery Program (NAIP) imagery. The producer accepts the data 'as is' and assumes all risks associated with its use. USDA-FSA assumes no responsibility for actual or consequential damage incurred as a result of any user's reliance on this data outside FSA Programs. Wetland identifiers do not represent the size, shape, or specific determination of the area. Refer to your original determination (CPA-026 and attached maps) for exact boundaries and determinations or contact USDA Natural Resources Conservation Service (NRCS).