

Lake Creek Homestead at Maytag Ranch

101.42 Acres

Fremont County, CO

\$869,000



HAYDEN  OUTDOORS®

Activities & Amenities

ATV/Off Road
Cattle/Ranch
Equestrian/Horse Property
Fishing
Hiking/Climbing
Hunting - Big Game
Hunting - Small Game
Hunting - Turkey
Orchard/Vineyard
Stream/River
Water Access
Waterfront
State Hunting Unit: 86

Land Details

Address: 1083 Lake Creek Ln,
Cotopaxi, Colorado 81223, USA
Closest Town: Westcliffe
Total Acres: 101.42
Deeded Acres: 101.42
Leased Acres: 0.00
Zoning: Agriculture
Elevation: 7,800
Topography: Flat and rolling
Vegetation: High country meadow
Pasture Acres: 101
Estimated Taxes: \$288.36 - 2021
Source of lot size: Assessor/Tax Data
HOA Dues: \$16,000

Building Details

Basement: None
Other Improvements: Member Barn
Fence Type: Barbed Wire
Waterfront Features: Lake Creek



Property Summary:

Offering an exceptional property located on the exclusive Maytag Ranch, one of the finest shared working ranch communities in Colorado. Enjoy spectacular views of the Sangre de Cristo Mountain Range. Maytag Ranch invites owners to participate in this authentic cattle ranch, built and managed with sustainable ranching practices to honor its heritage & protect its values. You and your family can become true ranchers here! Live the Dream~Here!





Land

There's nothing like sleeping with the bedroom windows open to hear the sounds that guide you to true rest and real sleep. Nothing compares to the gentle rushing sound of a high-country stream and the sounds of the birds of the night cooing in the cool mountain air. Majestic trophy elk, mule deer, antelope, and turkey are abundant. Utilities: There is a well and power already at the building location!

Over 2,950 acres of private ranch access for hunting, horseback riding, or other outdoor recreational pursuits. There are two miles of creek fishing, two ponds on the ranch, and private access to nearly one mile of gold medal water on the Arkansas River, famous for its trout fly fishing and white-water rafting, just 15 minutes away! Full equestrian facilities for owners' use, a stunning lodge/cookhouse, 2 well-equipped owner/guest cabins, and full-time ranch staff. Borders National forest. Within easy driving distance to the Historic Mountain towns of Westcliffe/Silver Cliff & Salida.

This incredible property offers you all the benefits of owning a large mountain ranch with none of the headaches and at a fraction of the cost!! Everything is in place for year-round occupancy in this special home. Design your dream home to be situated at the base of the Sangre de Cristo mountains in the fertile southern Colorado valley...and call it "Home."

Improvements

For Members use:

- Two rustically elegant, fully furnished guest cabins
- Large main lodge with commercial grade chef's kitchen and a spacious great room, offering over 4,000 sf of entertaining area.





Recreation

Numerous Amenities for Ranch Members – Here are a few...

- Some of the finest fishing in southern Colorado through our Ranch controlled access to one of the best stretches on the famed 102-mile-long Gold Medal Arkansas River
- Stocked Fishing ponds and enhanced streams
- A barn stall filled with recreational gear (fly fishing and spin casting gear, archery equipment, mountain bikes, etc)
- Well-trained Quarter Horses (imagine you and your family barrel racing and roping & trail riding).
- A Round pen and riding arena perfect for teaching beginners or practicing your riding skills
- Trophy Class Mule Deer, Elk, Pronghorn, and other wildlife
- Panoramic views
- Farm fresh eggs from our free range Chickens

Agriculture

Here are some of the various and diverse activities you can enjoy through your Maytag ownership:

- Hiking and walking
- Off-road/ATV Trails
- Gun range (pistol, shotgun), & 2000-yard rifle range
- Biking
- Horseback riding
- Fishing
- Archery
- Mountain Biking
- Hunting
- Camping (including overnight pack trips to alpine lakes)
- Cross-country skiing or snowshoeing
- Gardening
- Wildflower and wildlife viewing
- Ranch Events: Branding, barbecues, barn dances, picnics, etc.
- Local Festivals and Events: rodeos, county fairs, whitewater, balloon & other festivals, wine tasting, etc.





General Operations

Hassle-Free Ranch Ownership

Maytag Ranch was created to offer a fortunate few families the opportunity to own your own recreationally rich, authentic alpine Colorado cattle ranch without the hassle and expense of traditional ownership. Our cattle operation seeks to preserve our western tradition of natural grazing, healthy ecology, and family participation in the ranching lifestyle.

Maytag Ranch invites owners to participate in this authentic cattle ranch, built and managed with sustainable ranching practices to honor its heritage and protect its value.



Region & Climate

Southern Colorado Weather – Beautiful all year-round

Maytag Ranch sits in a beautiful valley between the picturesque Wet Mountains and the stunning Sangre de Cristo Range and benefits from a mild, temperate climate. With over 300 days of sunshine each year, inclement weather will rarely interrupt your outdoor pursuits. The elevation at the ranch ranges from 7,300' to 8,300'. July finds pleasant average high temperatures of 80 degrees, while January highs average a moderate 39 degrees.

*All information provided is deemed reliable but is not guaranteed and should be independently verified. Hayden Outdoors and its affiliates makes no representation or warranties as to the accuracy, reliability, or completeness of the information, text, property boundaries, graphics links or other items contained in any website, print, or otherwise linked to or from this website. The sale offering is made subject to errors, omissions, change of price, prior sale or withdrawal without notice.





Hayden Outdoors *Buyer Process*

BUYER QUALIFICATION: Each potential purchaser will be evaluated with respect to very specific submission requirements. Confidentiality will be held in the highest regard. Sellers will be made aware of each potential purchaser's ability to perform, should that become their goal.

PROPERTY SHOWINGS: With regards to scheduling showings on your property, Hayden Outdoors understands and respects your livelihood and personal items. The property will be presented to potential purchasers by a Hayden Outdoors representative by appointment only, unless arranged otherwise.

REPRESENTATION OF OFFERS: Hayden Outdoors will advise and support sellers in the presentation and representation of offers. Hayden Outdoors will supply active and current marketing materials when dealing with each potential offer. Offers must be presented in a timely manner, and Hayden Outdoors brokers will travel to present the offers, and in special cases, Hayden Outdoors may execute a webinar for presentation.

BROKER PARTICIPATION: Hayden Outdoors welcomes outside brokers to promote and sell our properties. We offer industry commission rates to participating brokers. All properties marketed with Hayden Outdoors are exclusively promoted and listed through the real estate process.

EQUAL HOUSING: Hayden Outdoors is proud to be an Equal Housing Opportunity Brokerage. All real estate advertised is subject to the Federal Housing Act, which makes it illegal to advertise "any preference, limitation, or discrimination because of race, color, religion, sex, handicap, familial status, or national origin, or intention to make any such preference, limitation, or discrimination."

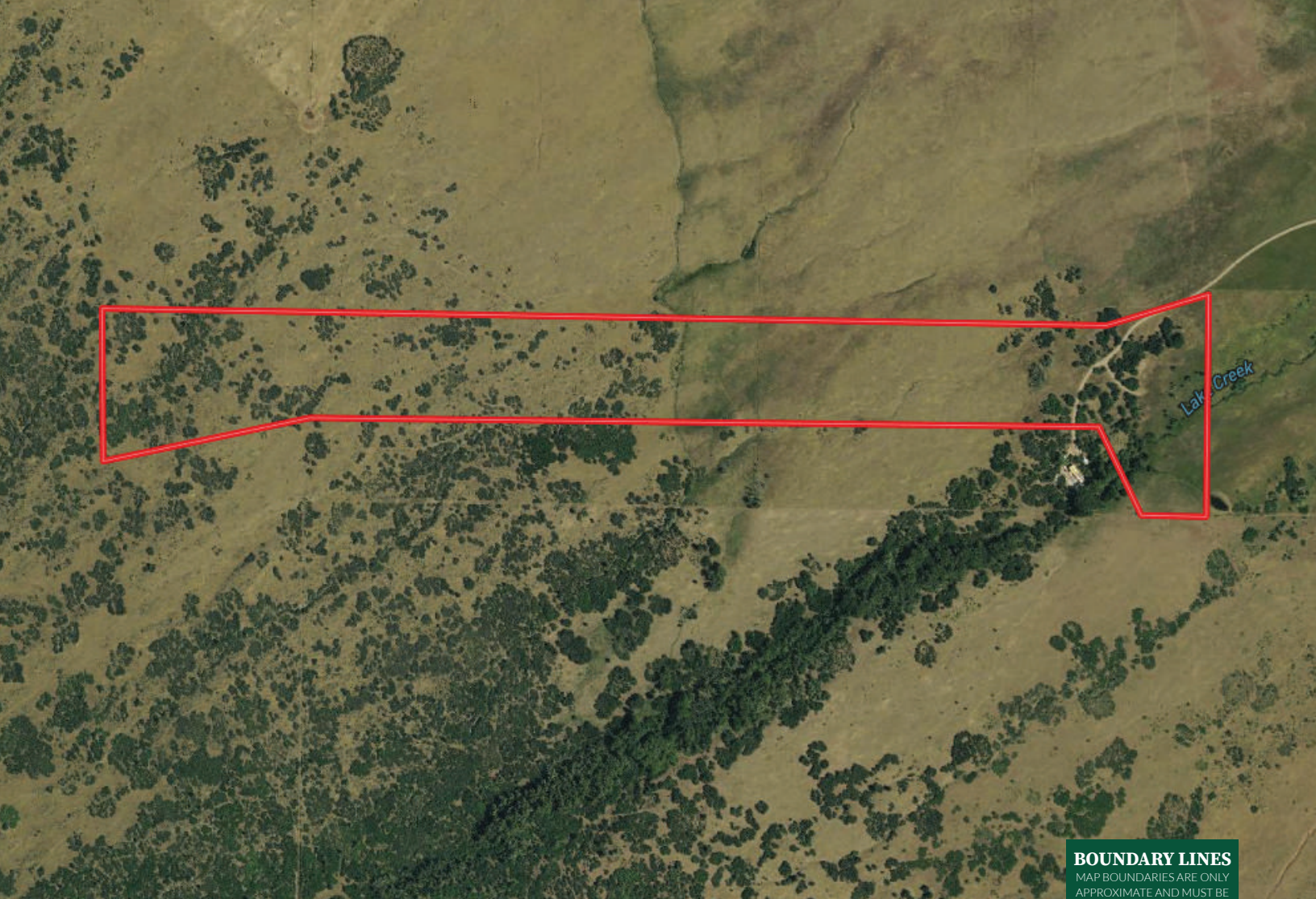


"The service you get transcends anything I've ever heard of. They literally turn your vision into reality. I mean, who else does that for you. Nobody"

- RICK STEINER, SELLER/BUYER

Scan to see more
testimonials





 Boundary

BOUNDARY LINES
MAP BOUNDARIES ARE ONLY
APPROXIMATE AND MUST BE
VERIFIED FOR ACCURACY.



Twila Geroux

📍 Broker Associate, Licensed in CO

✉ Twila@HaydenOutdoors.com

📞 719.371.4344


**HAYDEN
OUTDOORS.
REAL ESTATE**

